

CATALOGUE TECHNIQUE

Coulissant



H21 Coulissant



Différents modèles et finitions sont disponibles

Index

Profils 1.01

Accessoires 2.01

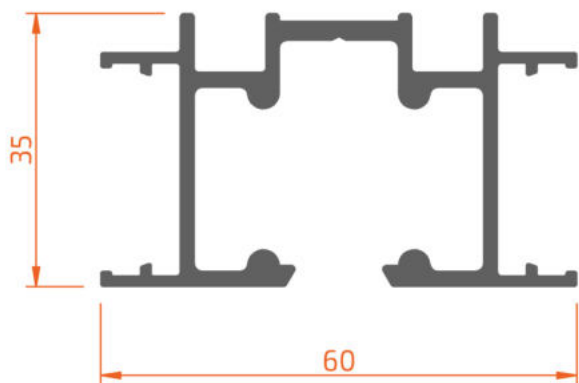
Vitrages 3.01

Coupes et débitages 4.01

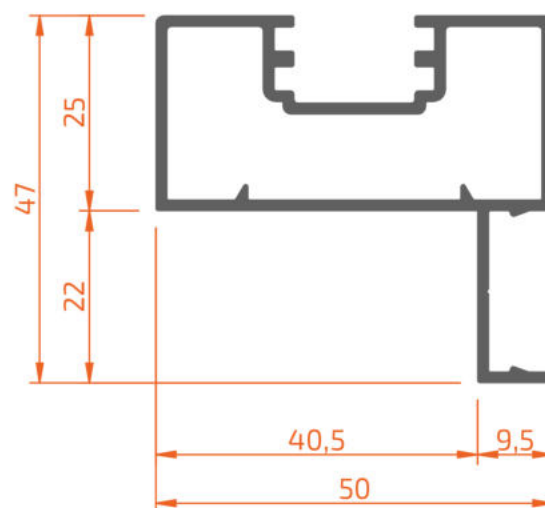
Section (1:1) 5.01

Usinage 6.01

Autres détails 7.01

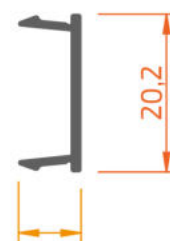


2CF21 16035

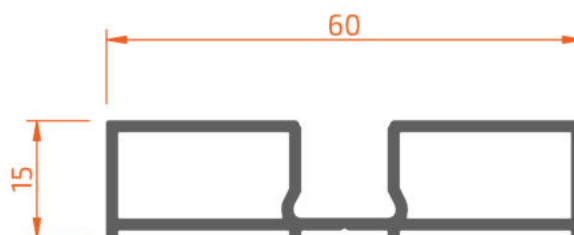


2CF21 35025

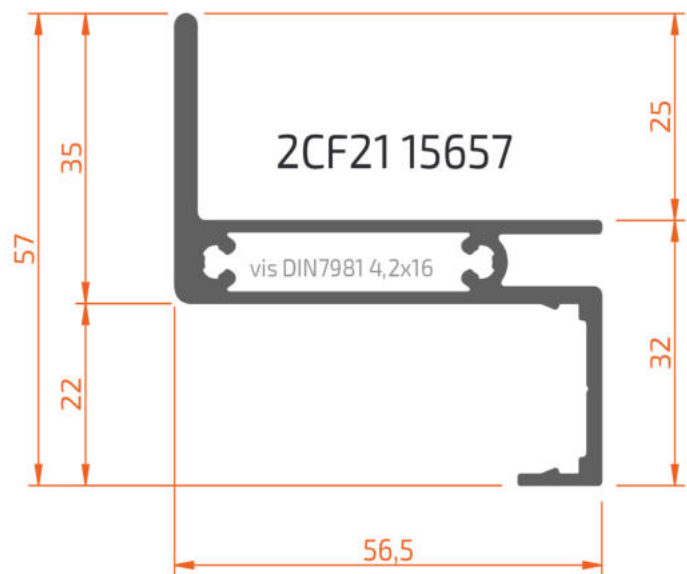
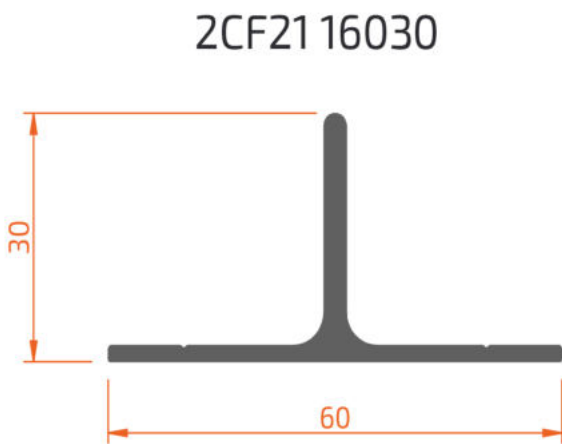
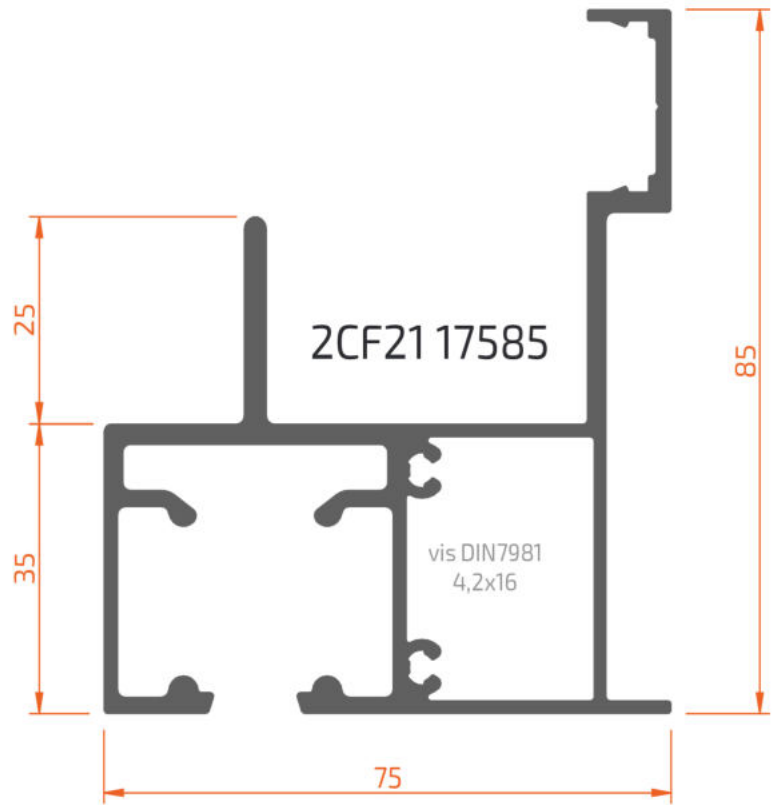
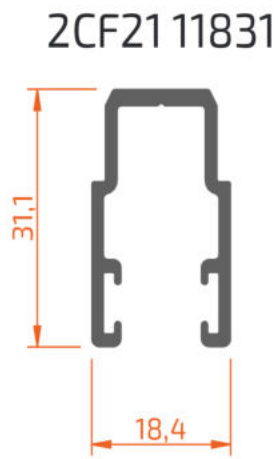
2CF21 11258



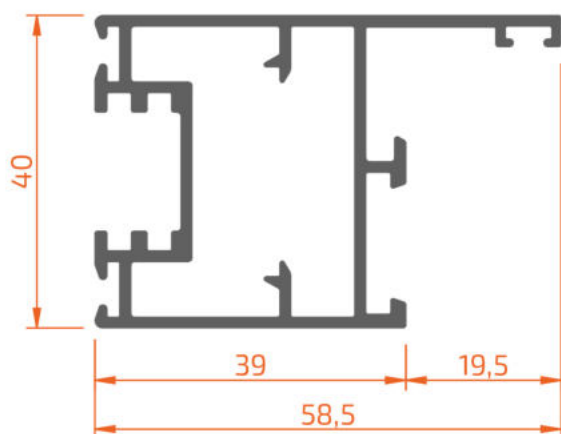
2CF21 30820



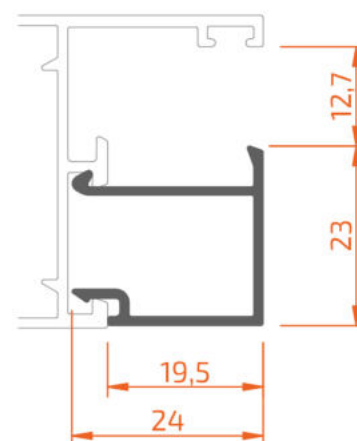
2CF21 16015



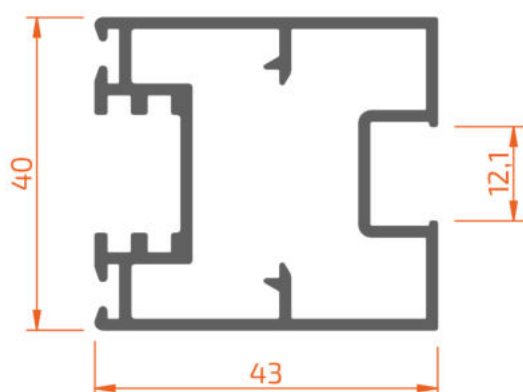
20F21 15840



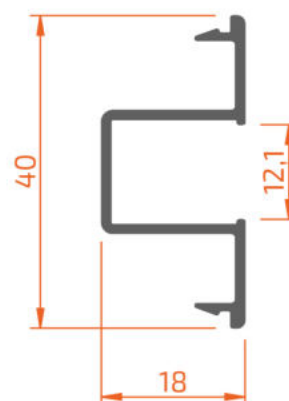
20000 72023



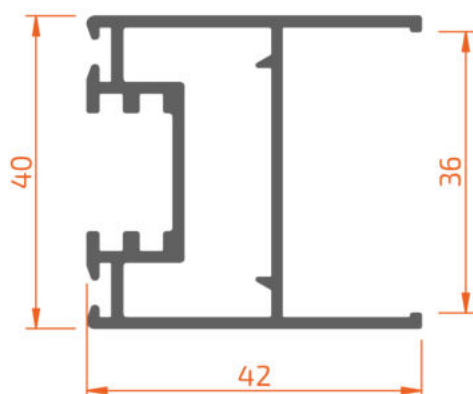
20F21 14340



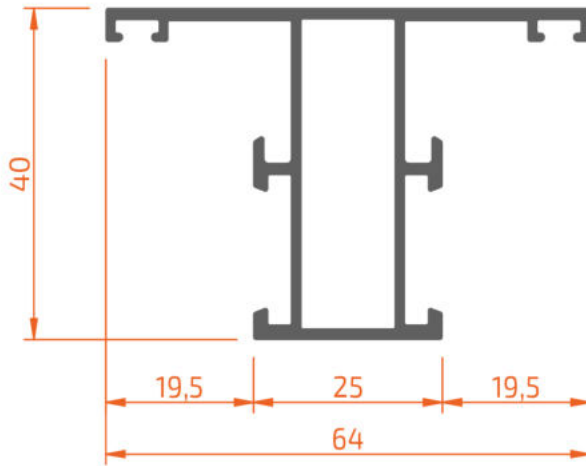
20F21 01512



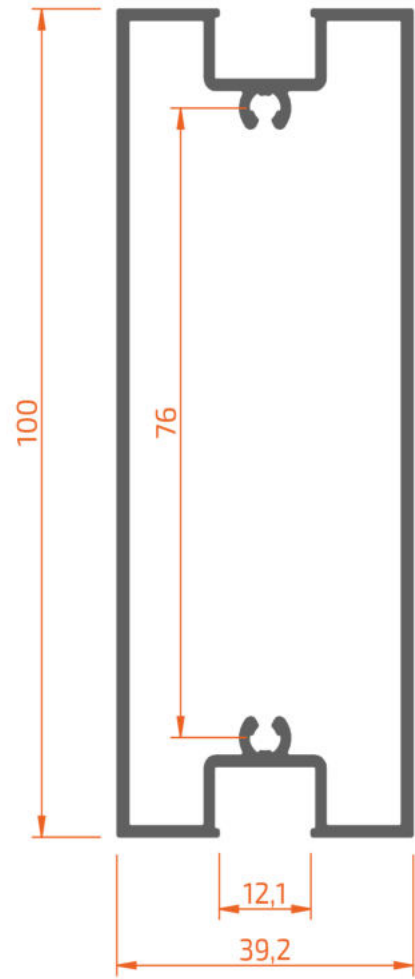
20F21 14240



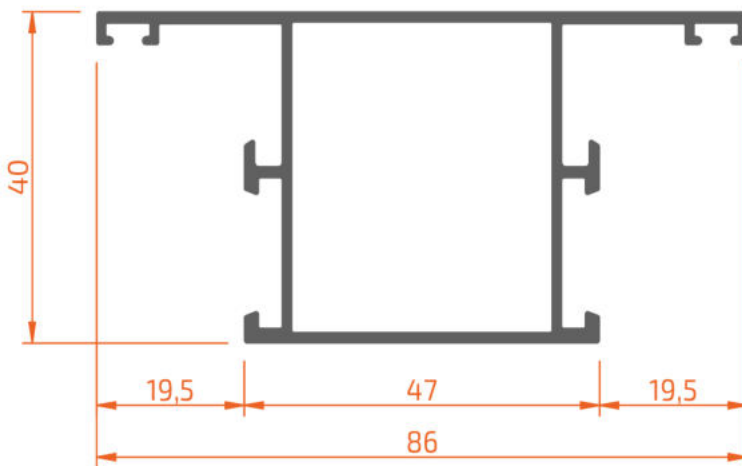
2BF40 54025



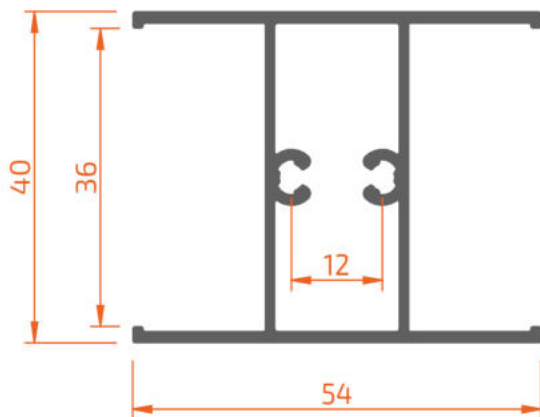
20F21 13910



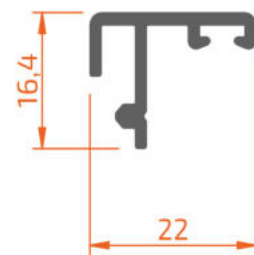
2BF40 54047

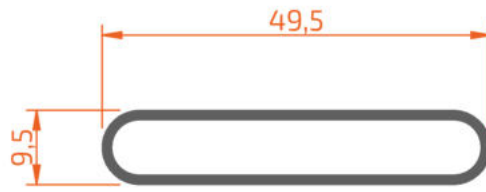


20F21 55440

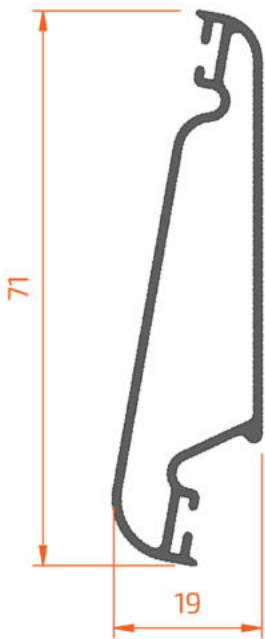


2RF21 12216

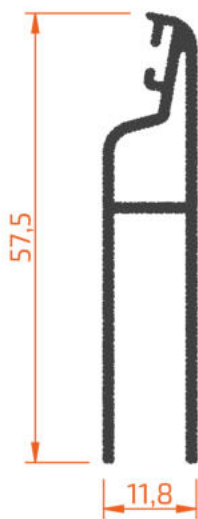




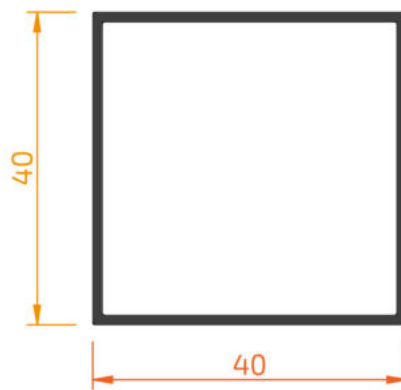
20F21 00614



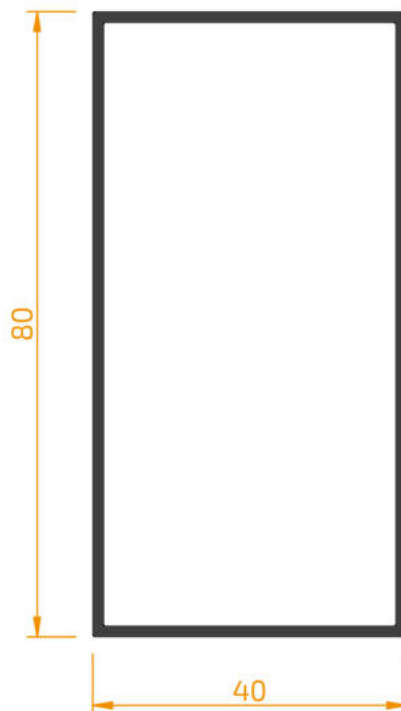
20F21 07119



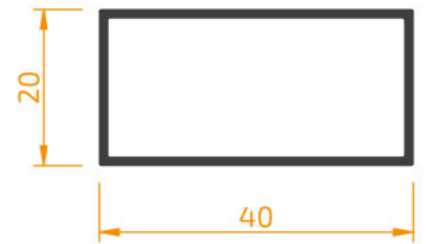
20F21 05712



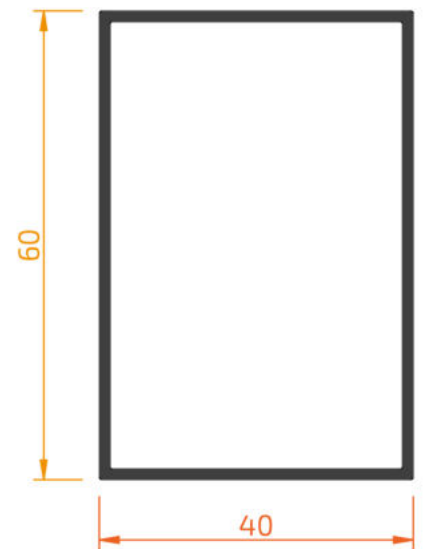
20000 01030



20000 98040



20000 94020

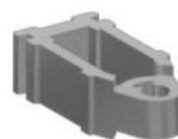


20000 96040





40000 22711
equerre d'assemblage 27x11mm



4BXXX 41218
tasseau traverse (12mm)



4BXXX 43318
tasseau montant (33mm)



6BXXX X0002
joint vantail et
exterieur vitrage



6XXXX 40034
joint de vitrage (3-4mm)



6XXXX 40056
joint de vitrage (5-6mm)



6XXXX 40079
joint de vitrage (7-9mm)



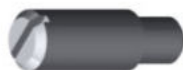
6XF21 X0002
joint fermeture



4XX21 28030
joint lame réglable

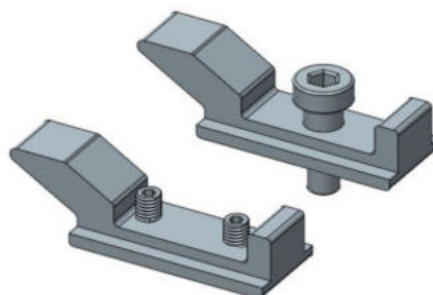


6XF21 26010
join brosse 6x10



8XF21 81100

pivot connexion crémone
repliable



8CF21 82140

point fermeture ouvrant
coulissante H21



8XF21 81120

crémone vantail principal



8XF21 82110

terminal tige repliable



8XF21 82120

fermeture vantail
secondaire



8CF21 60110
charriot réglable ouvrant



8CF21 60120
guide inférieure ouvrant

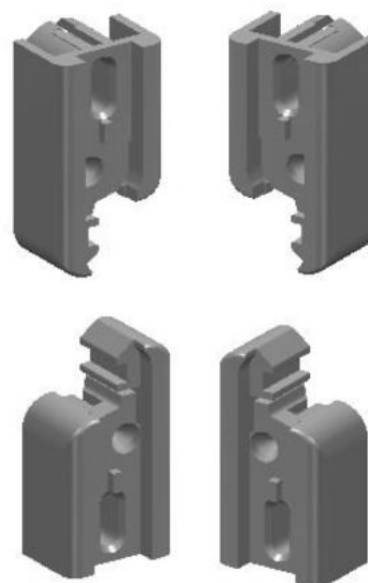


8CF21 60150
bloque- ouvrant



8CF21 60160
tasseau bloque-ouvrant

Lame Réglable

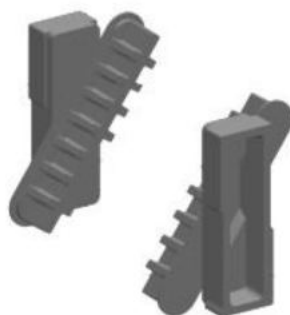


4XX21 68030
poignée Slitta
lame réglable

4XX21 68020
ensemble de pièces
terminales de mécanisme

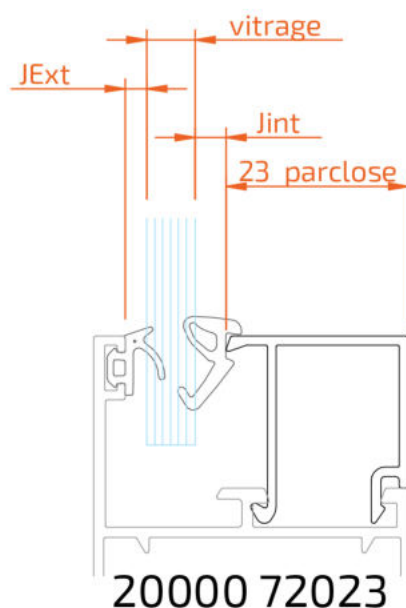
4XX21 68010
jeu de mécanismes de
transmission (52 lames - 3,2m)

Lame Fixe



4XX21 45010
pièces fixation lame





| JOINT EXTÉRIEUR | VITRAGE | JOINT INTÉRIEUR | PARCLOUSE |
|--------------------|---------|--------------------|----------------|
| 6BXXX X0002 | 6 | 40034 | 20000 72023 |
| | 5 | 40056 | |
| | 4 | 40056 | |



6BXXX X0002
joint de vitrage extérieur



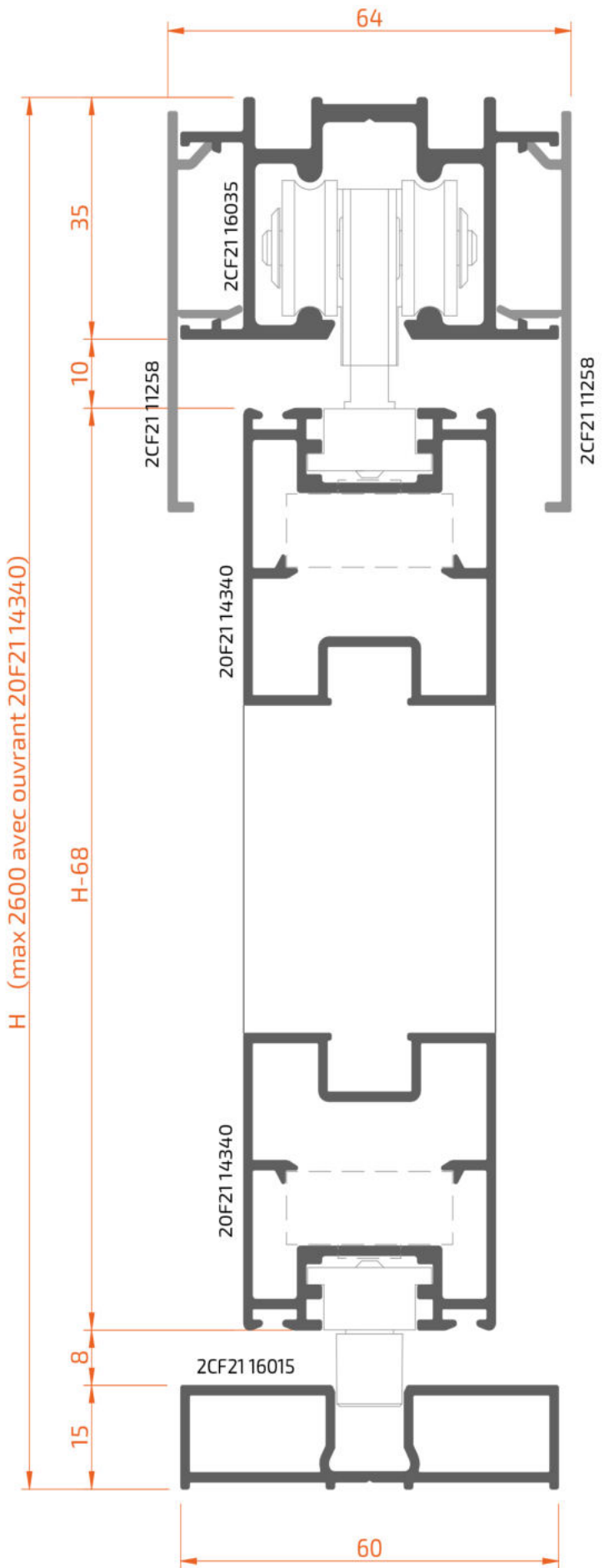
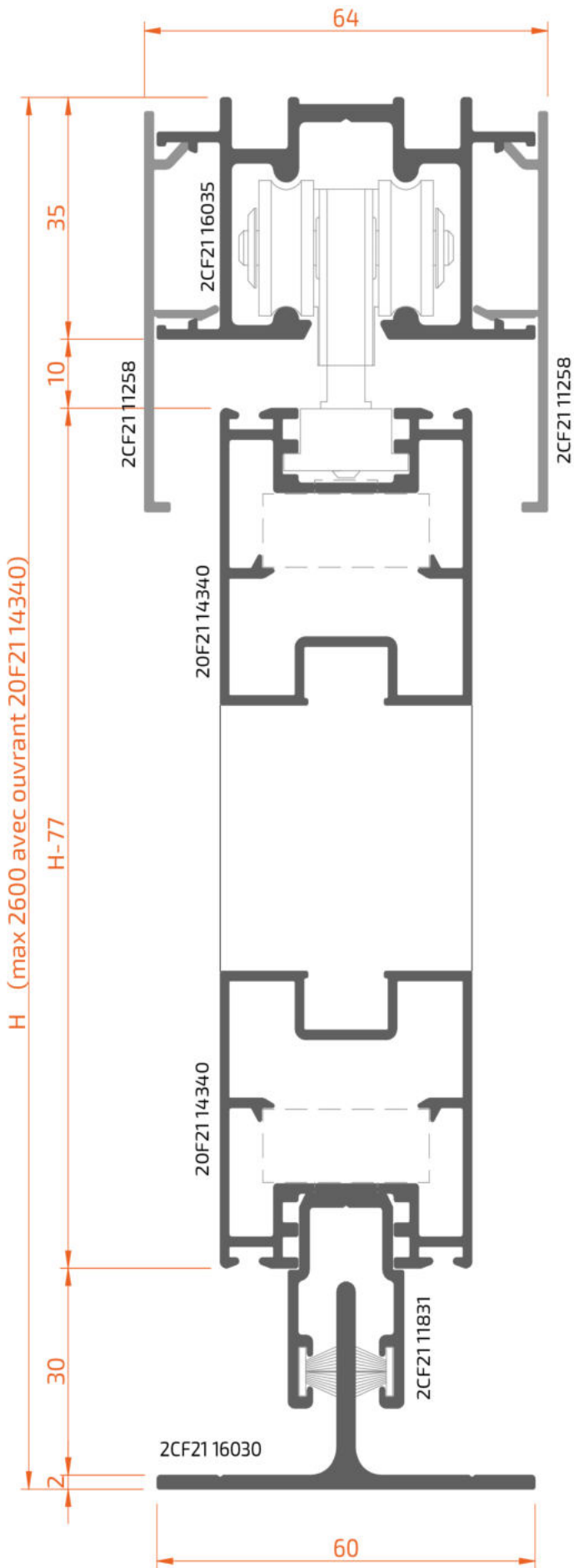
6XXXX 40034
joint de vitrage (3-4mm)



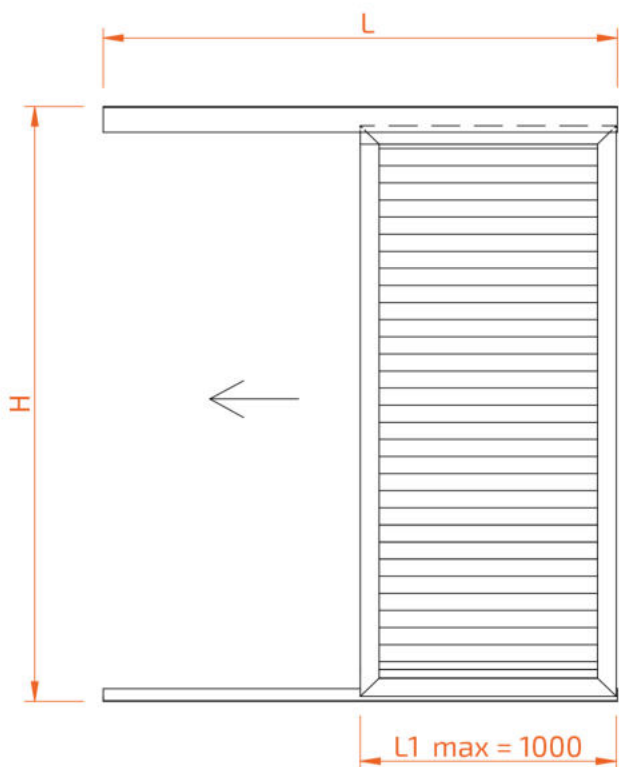
6XXXX 40056
joint de vitrage (5-6mm)



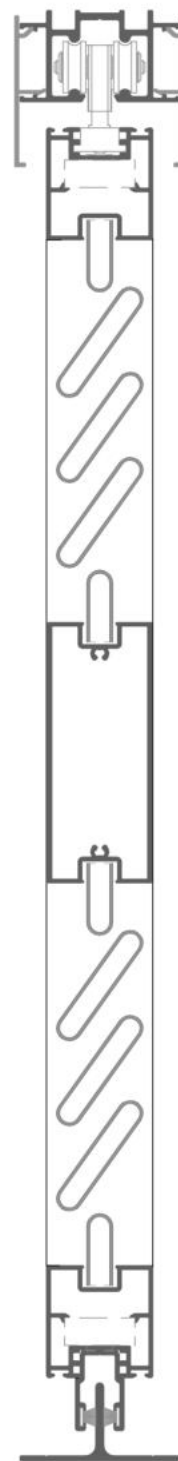
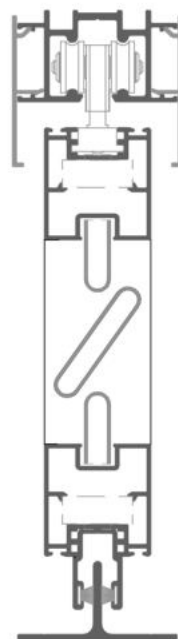
| | |
|--------------------------------------|--------------------|
| Coulissant Avec Lame Fix | 4.02 - 4.03 |
| Coulissant Avec Tube | 4.04 - 4.09 |
| Coulissant Avec Lame Réglable | 4.10 - 4.11 |
| Coulissant Avec Vitrage | 4.12 - 4.13 |



Coupes et débitages



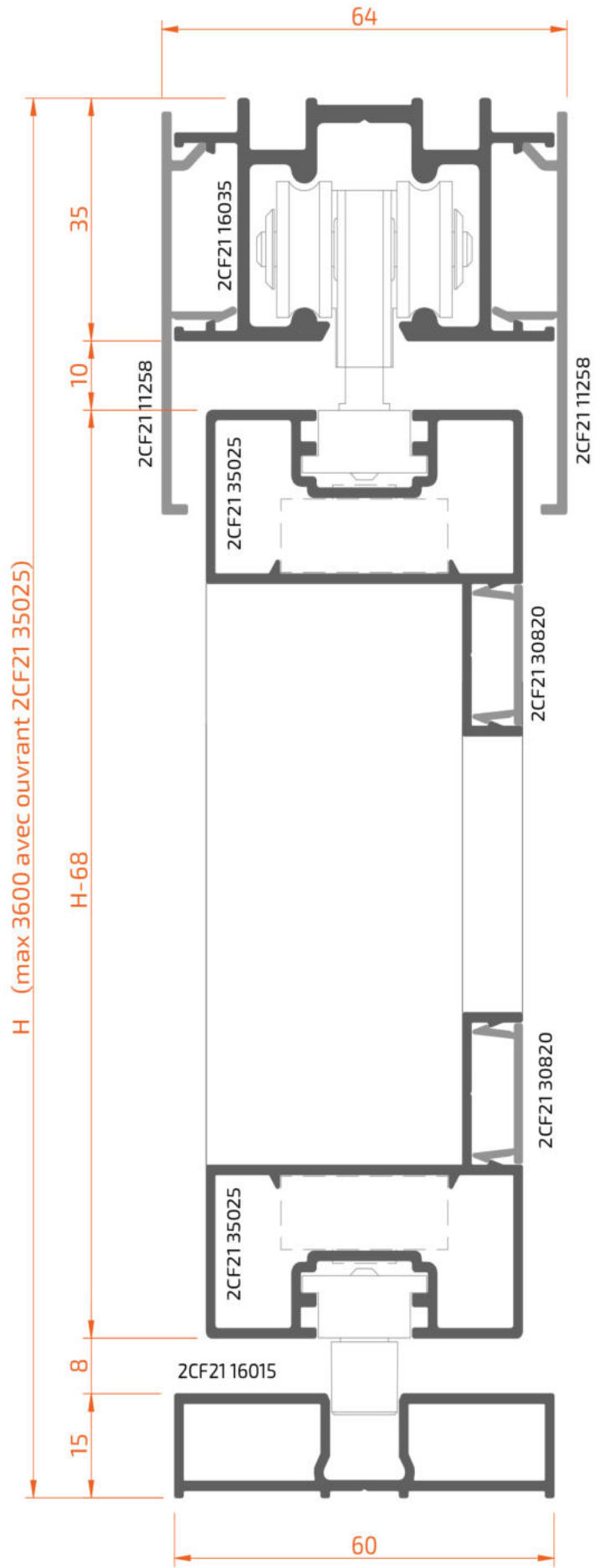
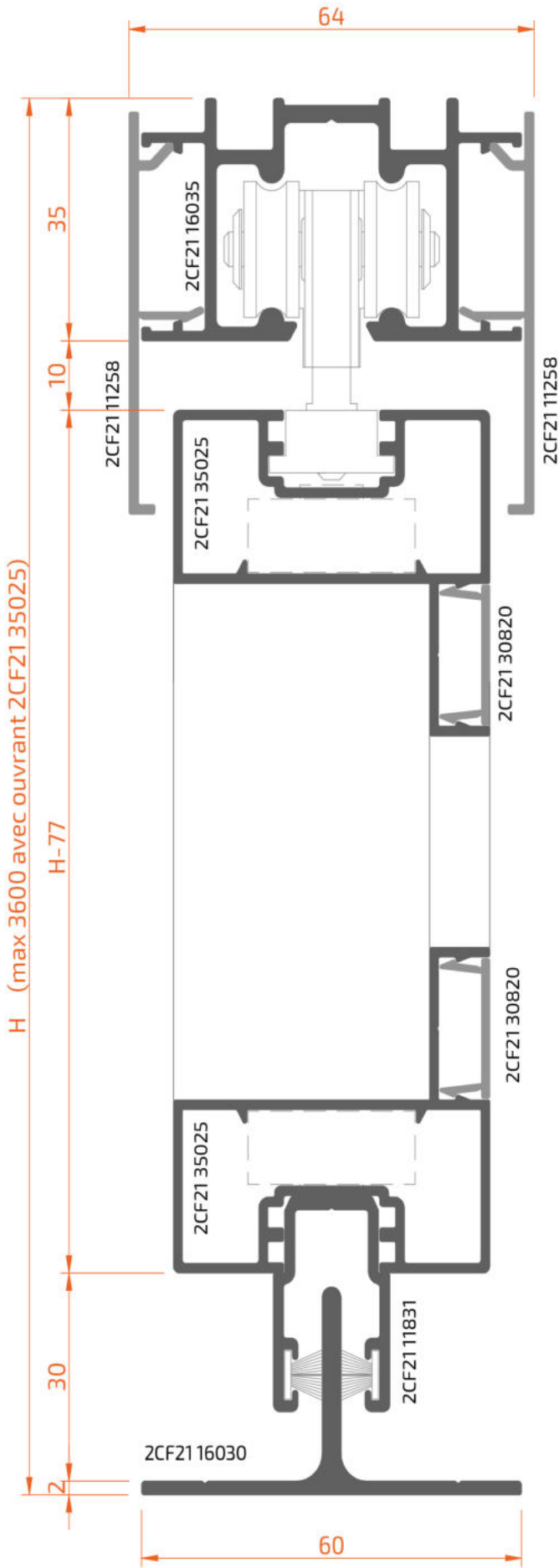
Echelle 1:3



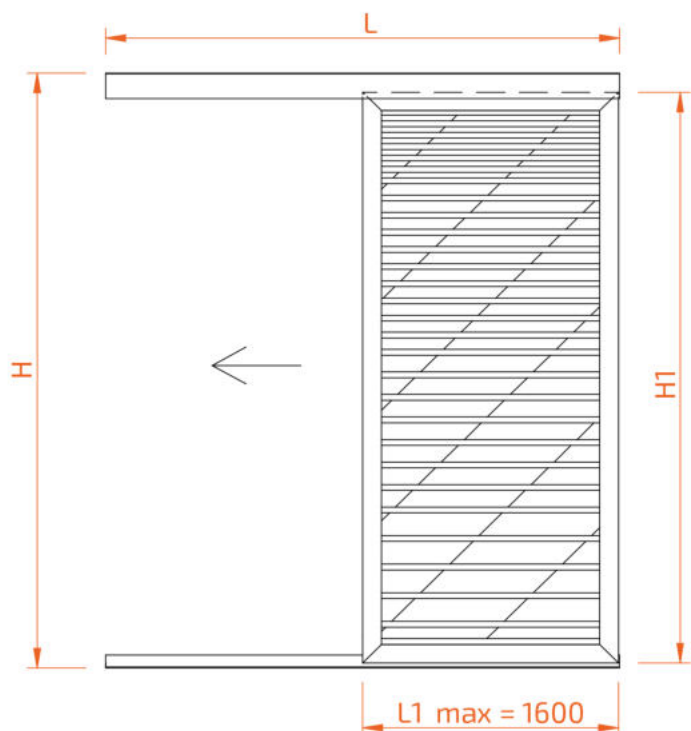
| Profil | Dessin | Coupe | Quantité | Formule | Quantité | Formule |
|-------------|--------|-------|---------------------|---------|---------------------|---------|
| 2CF21 16035 | | | 1 | L | 1 | L |
| 2CF21 11258 | | | 2 | L | 2 | L |
| 2CF21 16030 | | | 1 | L | | |
| 2CF21 16015 | | | | | 1 | L |
| 20F21 14340 | | | 2 | L1 | 2 | L1 |
| | | | 2 | H-77 | 2 | H-68 |
| 2CF21 11831 | | | 1 | L1-110 | | |
| 20F21 13910 | | | 1 | L1-70 | 1 | L1-70 |
| 20F21 00614 | | | Voir Page 7.01-7.02 | | Voir Page 7.01-7.02 | |

| Accessoire | Dessin | Description | Quantité |
|-------------|--------|-------------------------|----------|
| 40000 22711 | | Equerre | 04 |
| 8CF21 60110 | | Chario Reglable ouvrant | 02 |
| 8CF21 60120 | | Guide Inferieur ouvrant | 02 |
| 8CF21 60150 | | Bloque Ouvrant | 02 |
| 8CF21 60160 | | Tasseau Bloque Ouvrant | 02 |
| 6XF21 26010 | | Joint brosse fermeture | 2 L1 |

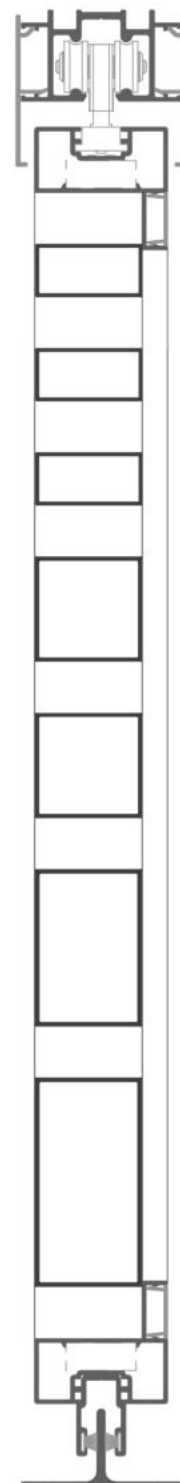
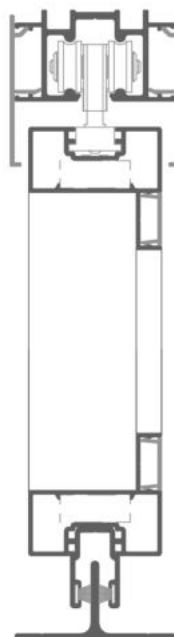
8CF21 60120 Avec Rail 2CF21 16015



Coupes et débitages



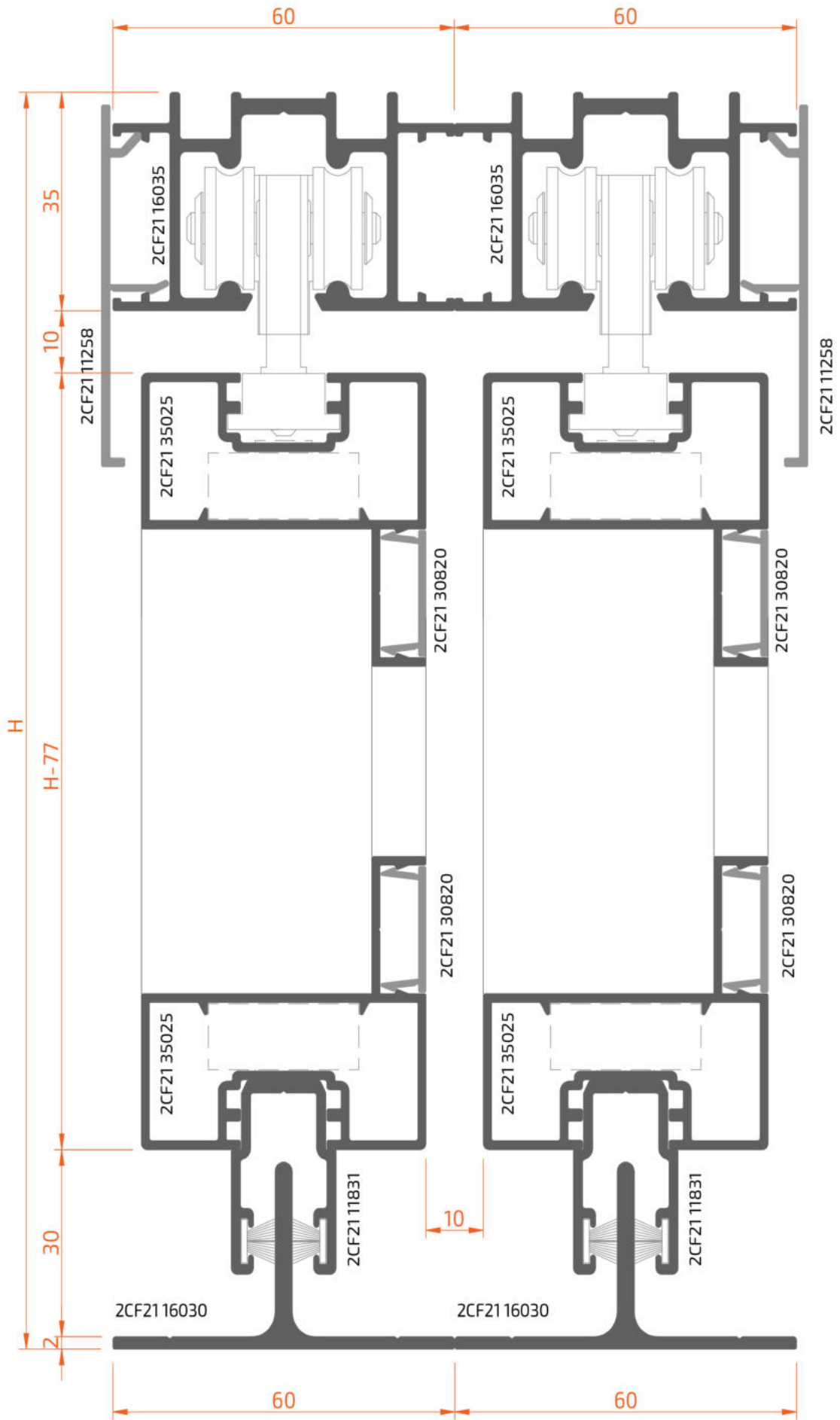
Echelle 1:3

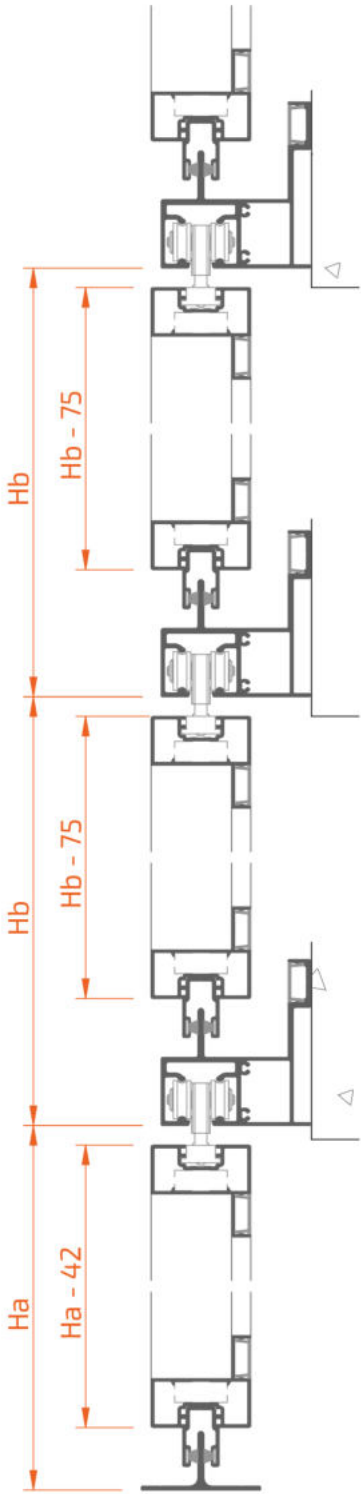
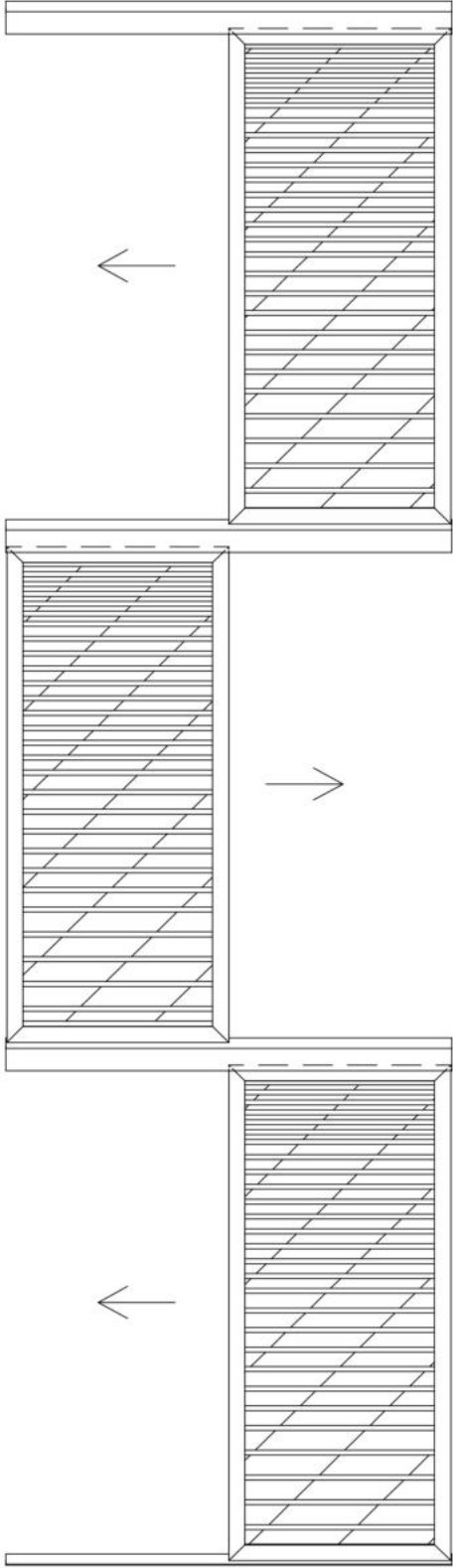


| Profil | Dessin | Coupe | Quantité | Formule | Quantité | Formule |
|-------------|--------|-------|----------|---------|----------|---------|
| 2CF21 16035 | | | 1 | L | 1 | L |
| 2CF21 11258 | | | 2 | L | 2 | L |
| 2CF21 16030 | | | 1 | L | | |
| 2CF21 16015 | | | | | 1 | L |
| 2CF21 35025 | | | 2 | L1 | 2 | L1 |
| | | | 2 | H-77 | 2 | H-68 |
| 2CF21 30820 | | | 2 | L1-50 | 2 | L1-50 |
| | | | 2 | H1-50 | 2 | H1-50 |
| 2CF21 11831 | | | 1 | L1-110 | | |

| Accessoire | Dessin | Description | Quantité |
|-------------|--------|-------------------------|----------|
| 40000 22711 | | Equerre | 04 |
| 8CF21 60110 | | Chario Reglable ouvrant | 02 |
| 8CF21 60120 | | Guide Inferieur ouvrant | 02 |
| 8CF21 60150 | | Bloque Ouvrant | 02 |
| 8CF21 60160 | | Tasseau Bloque Ouvrant | 02 |
| 6XF21 26010 | | Joint brosse fermeture | 2 L1 |

8CF21 60120 Avec Rail 2CF21 16015





voir détail en 5.07

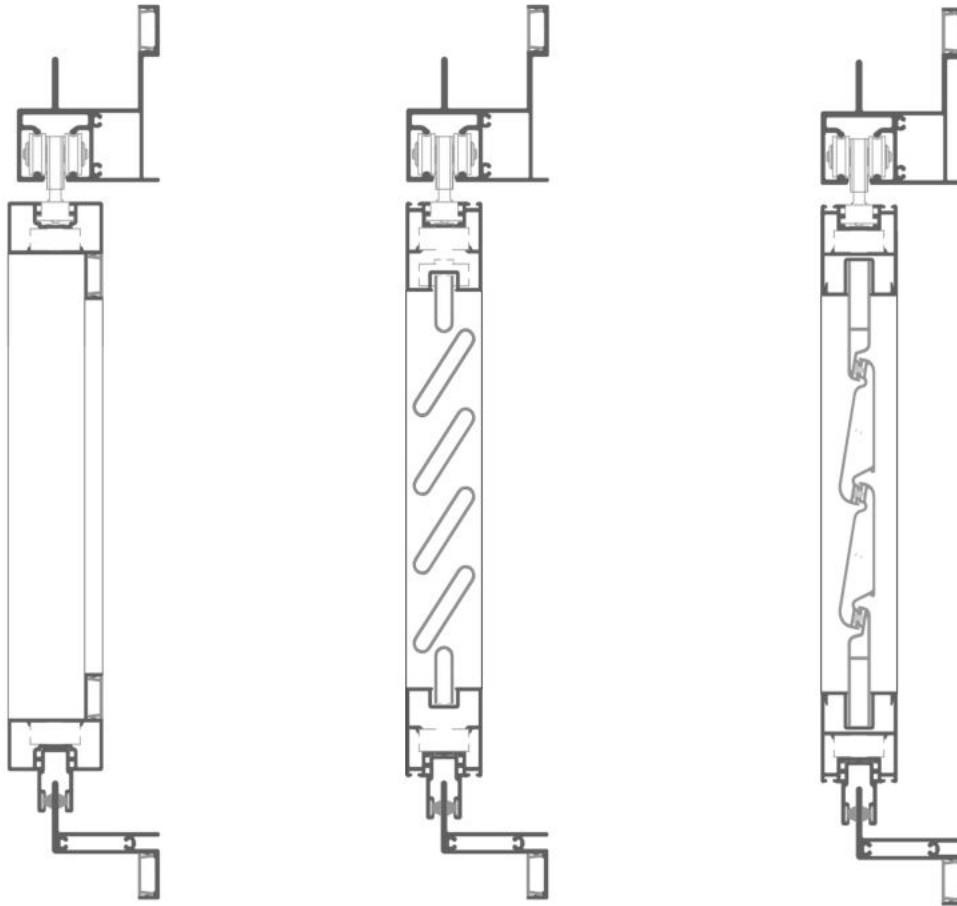
voir détail en 5.07

voir détail en 5.08

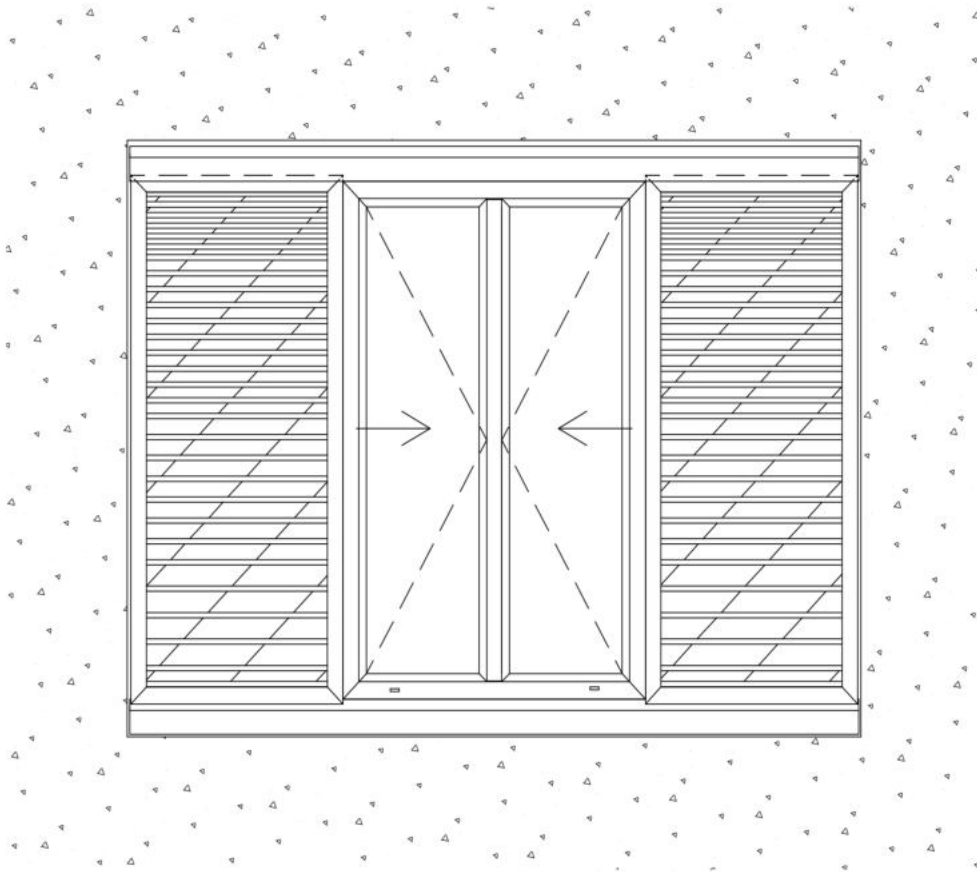
voir détail en 5.07

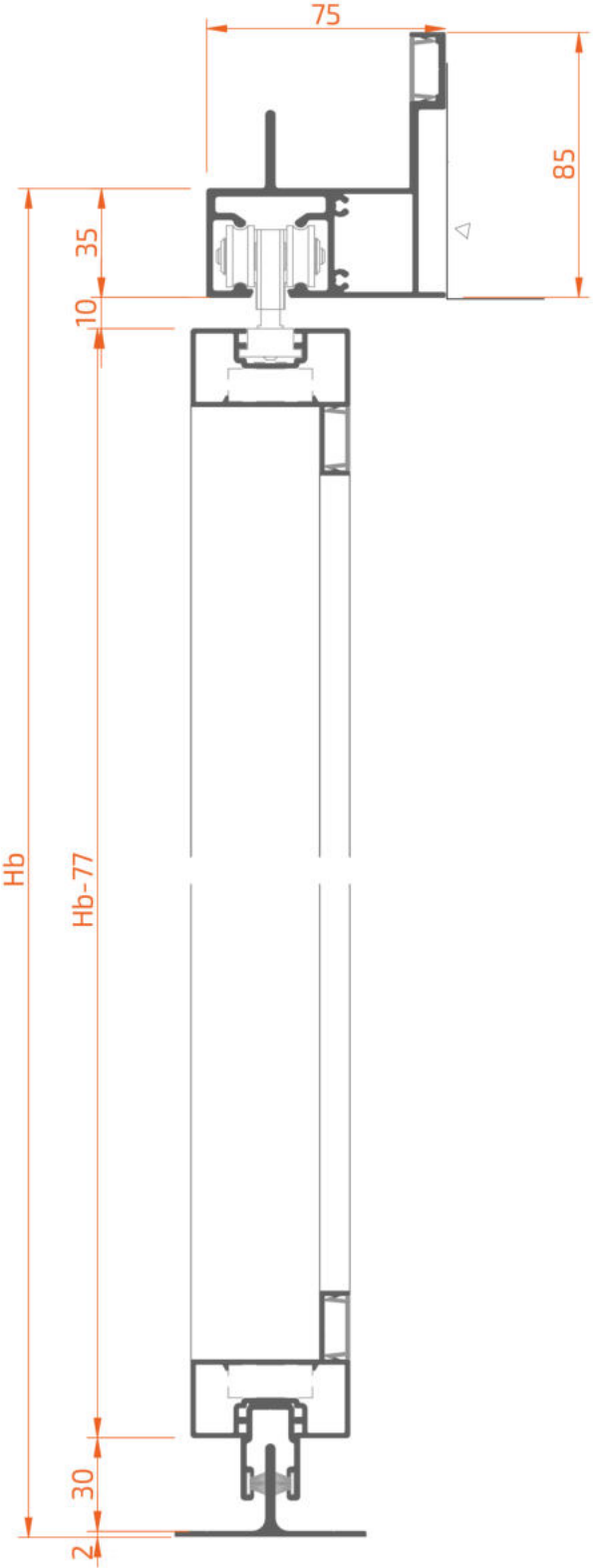
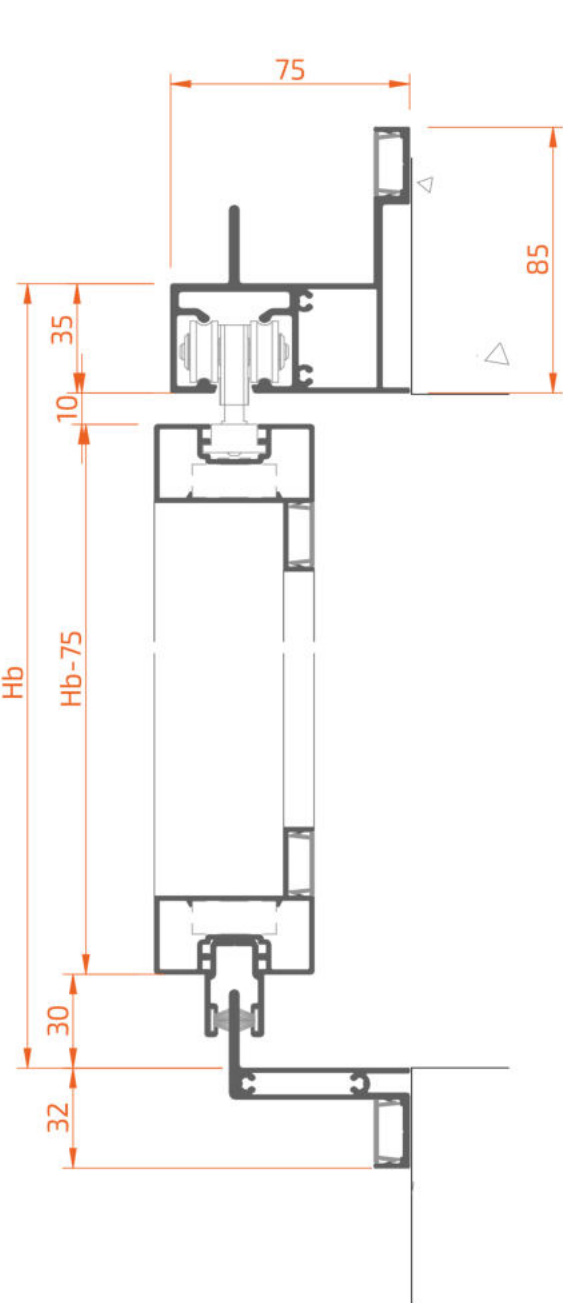
voir détail en 5.06

Echelle 1:4

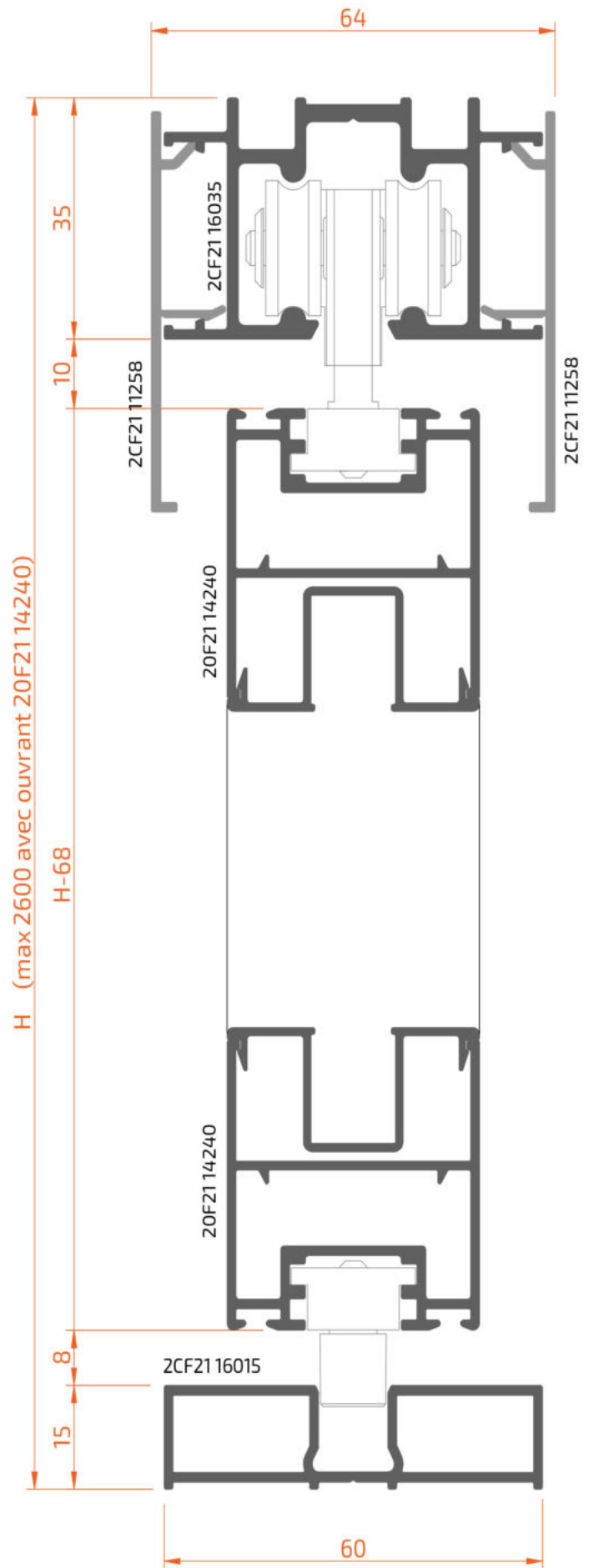
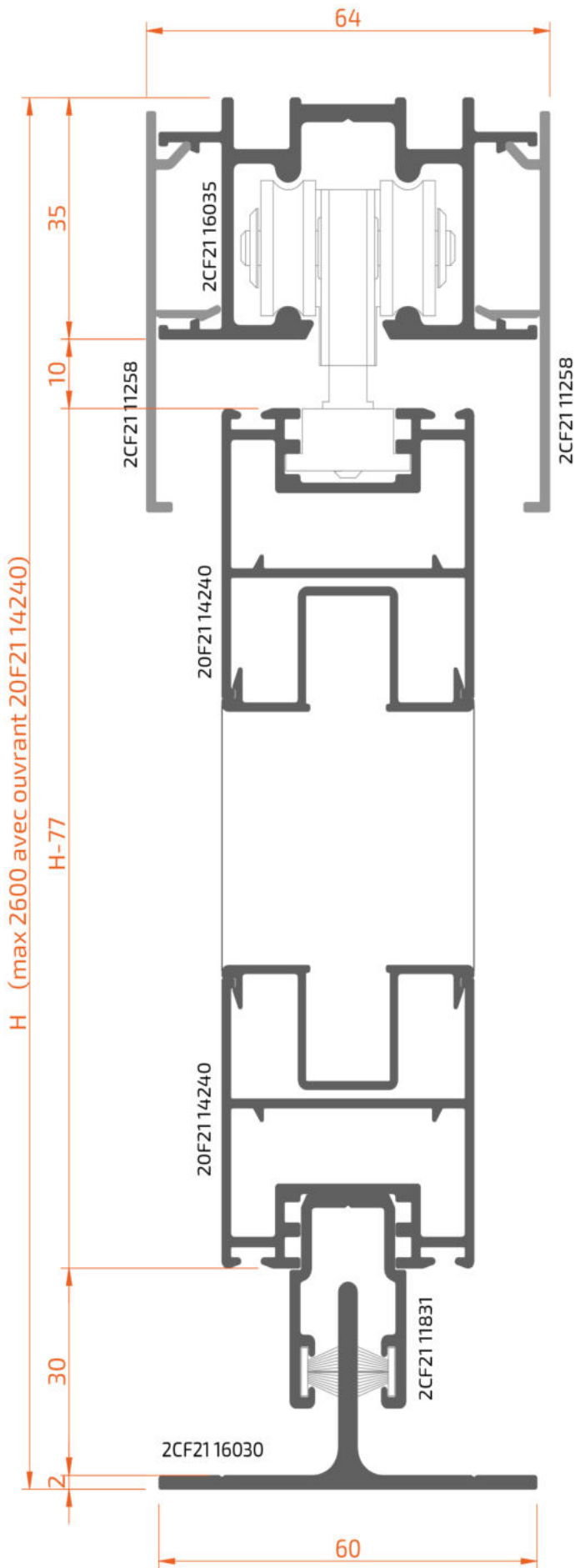


Echelle 1:4

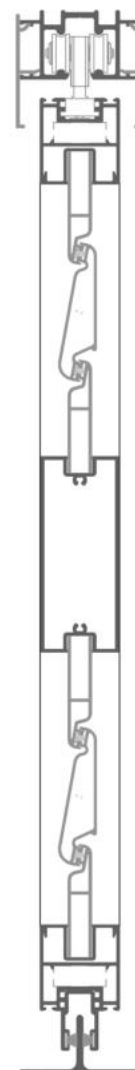
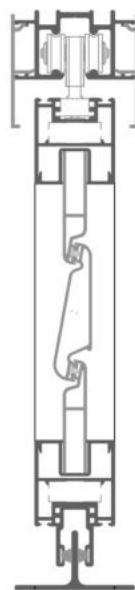
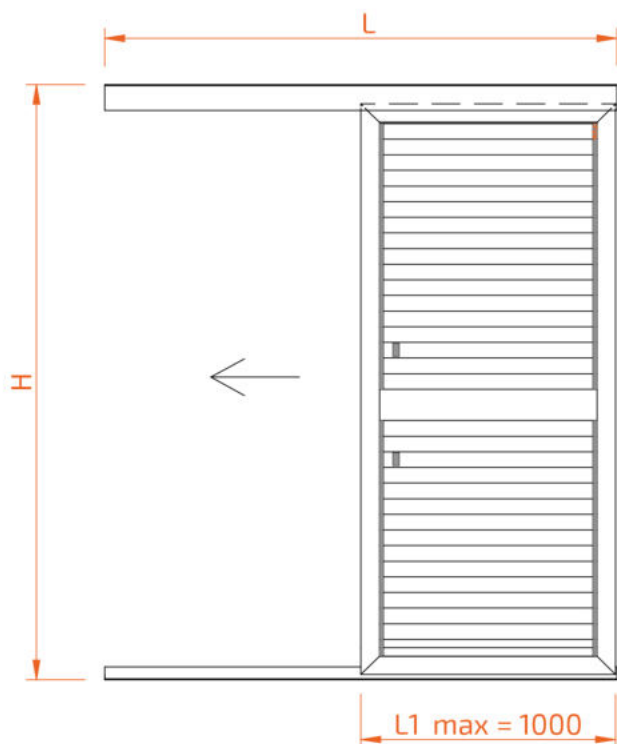




Echelle 1:25



Coupes et débitages



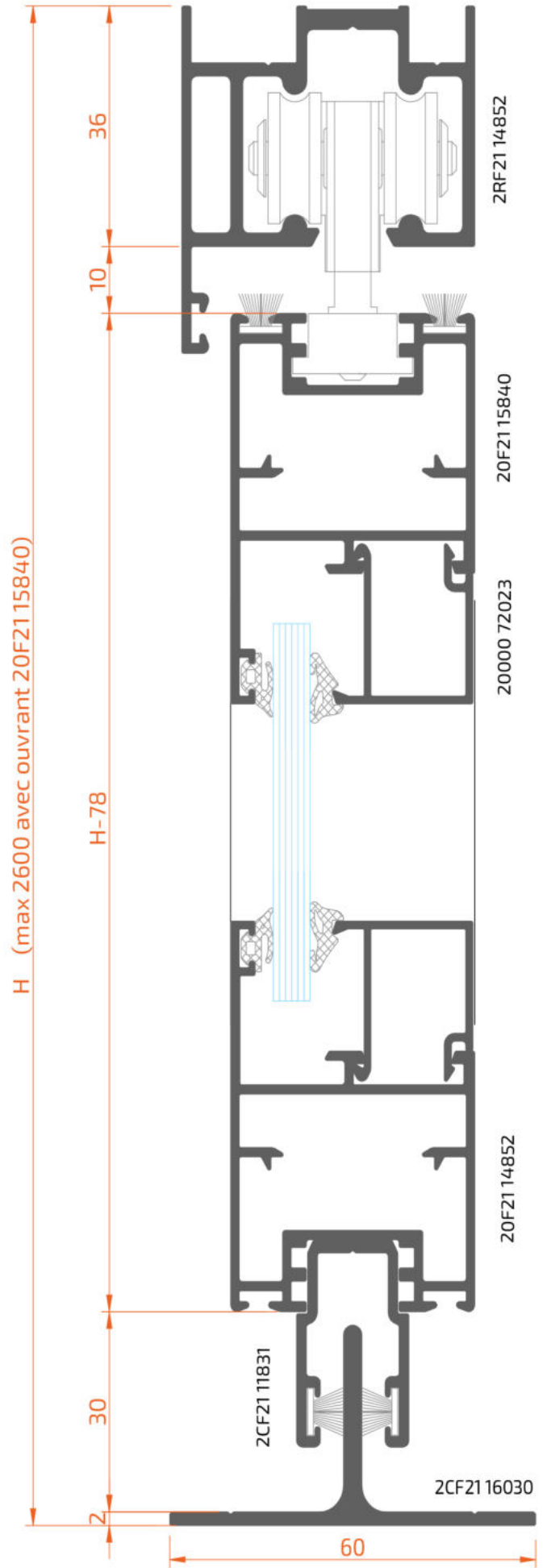
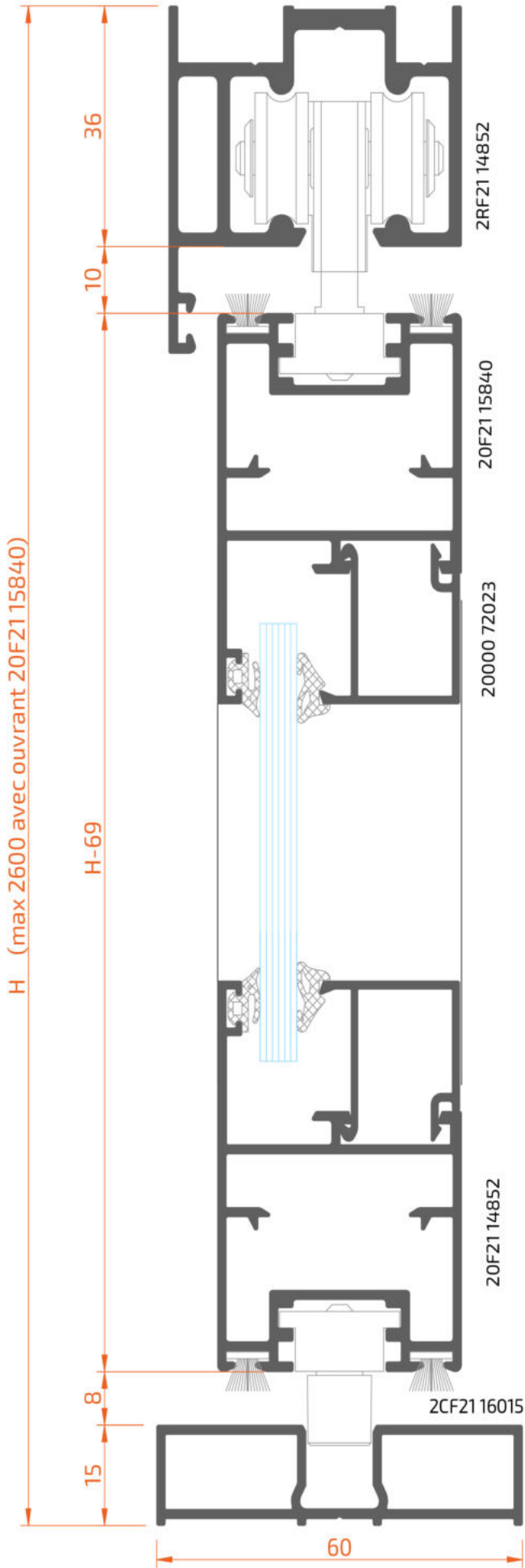
Echelle : 1:4



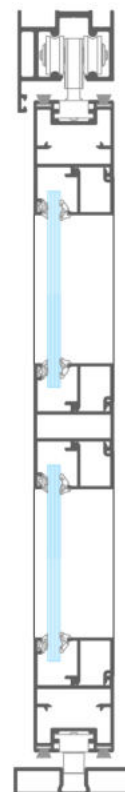
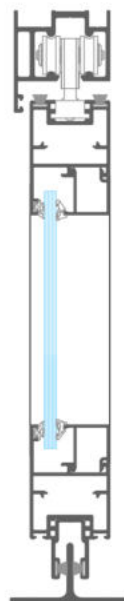
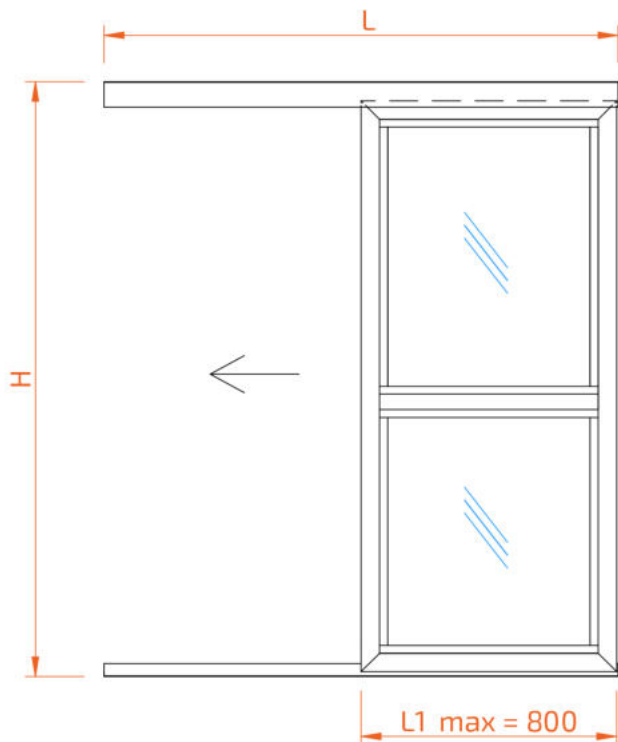
| Profil | Dessin | Coupe | Quantité | Formule | Quantité | Formule |
|-------------|--------|-------|---------------------|---------|---------------------|---------|
| 2CF21 16035 | | | 1 | L | 1 | L |
| 2CF21 11258 | | | 2 | L | 2 | L |
| 2CF21 16030 | | | 1 | L | | |
| 2CF21 16015 | | | | | 1 | L |
| 20F21 14240 | | | 2 | L1 | 2 | L1 |
| | | | 2 | H-77 | 2 | H-68 |
| 20F21 01512 | | | 2 | L1-84 | 2 | L1-84 |
| 2CF21 11831 | | | 1 | L1-110 | | |
| 20F21 13910 | | | 1 | L1-50 | 1 | L1-50 |
| 20F21 07119 | | | Voir Page 7.03-7.04 | | Voir Page 7.03-7.04 | |
| 20F21 05712 | | | Voir Page 7.03-7.04 | | Voir Page 7.03-7.04 | |

| Accessoire | Dessin | Description | Quantité |
|-------------|--------|-------------------------|----------|
| 40000 22711 | | Equerre | 04 |
| 8CF21 60110 | | Chario Reglable ouvrant | 02 |
| 8CF21 60120 | | Guide Inferieur ouvrant | 02 |
| 8CF21 60150 | | Bloque Ouvrant | 02 |
| 8CF21 60160 | | Tasseau Bloque Ouvrant | 02 |
| 6XF21 26010 | | Joint brosse fermeture | 2 L1 |

8CF21 60120 Avec Rail 2CF21 16015



Coupes et débitages



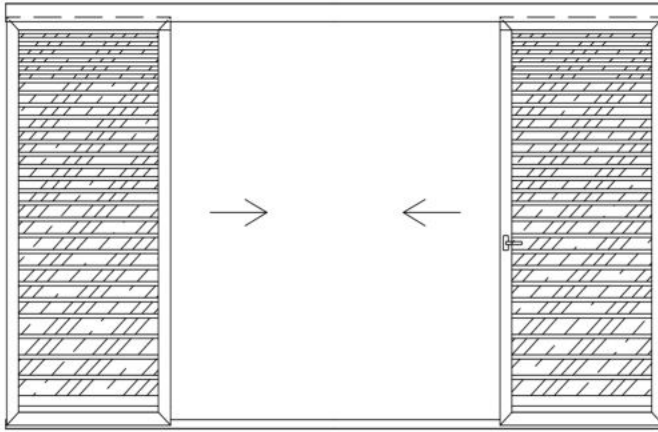
Echelle : 1:4



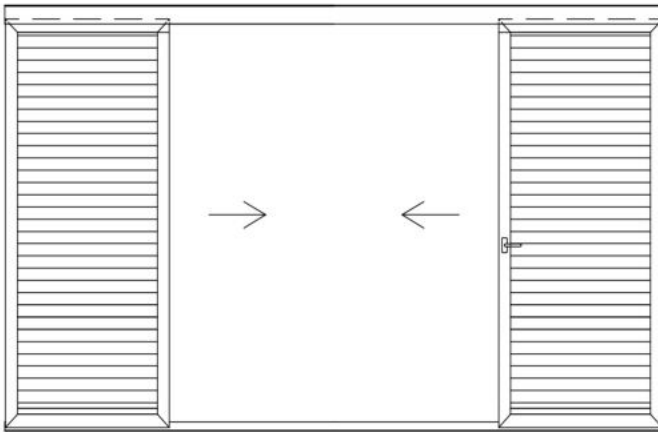
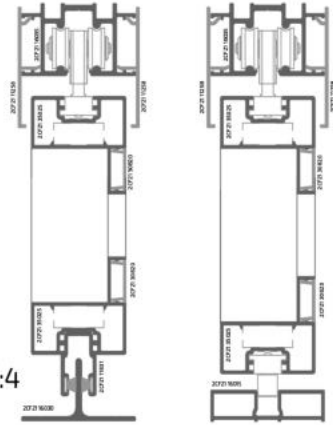
| Profil | Dessin | Coupe | Quantité | Formule | Quantité | Formule |
|-------------|--------|-------|----------|---------|----------|---------|
| 2RF21 14852 | | | 1 | L | 1 | L |
| 2CF21 16030 | | | 1 | L | | |
| 2CF21 16015 | | | | | 1 | L |
| 20F21 15840 | | | 2 | L1 | 2 | L1 |
| | | | 2 | H-78 | 2 | H-69 |
| 20000 72023 | | | 2 | L1-78 | 2 | L1-78 |
| | | | 2 | H-195 | 2 | H-186 |
| 2CF21 11831 | | | 1 | L1-110 | | |
| 2BF40 54025 | | | 1 | L1-78 | 1 | L1-78 |
| | | | 1 | L1-68 | 1 | L1-68 |

| Accessoire | Dessin | Description | Quantité |
|-------------|--------|-------------------------|----------|
| 40000 22711 | | Equerre | 04 |
| 8CF21 60110 | | Chario Reglable ouvrant | 02 |
| 8CF21 60120 | | Guide Inferieur ouvrant | 02 |
| 8CF21 60150 | | Bloque Ouvrant | 02 |
| 8CF21 60160 | | Tasseau Bloque Ouvrant | 02 |
| 6XF21 26010 | | Joint brosse fermeture | 4 L1 |

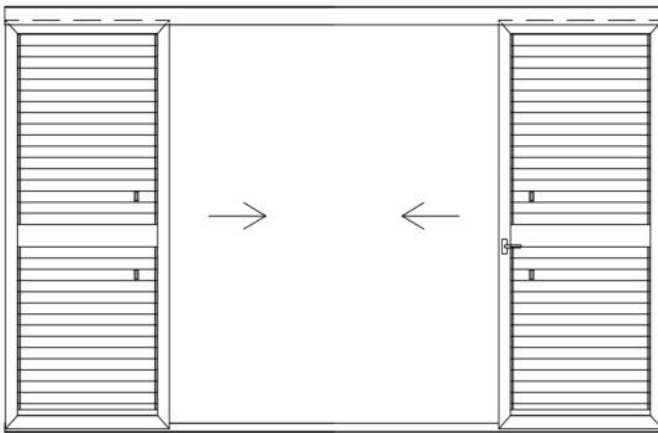
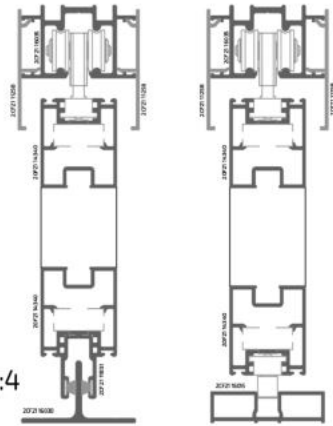
8CF21 60120 Avec Rail 2CF21 16015



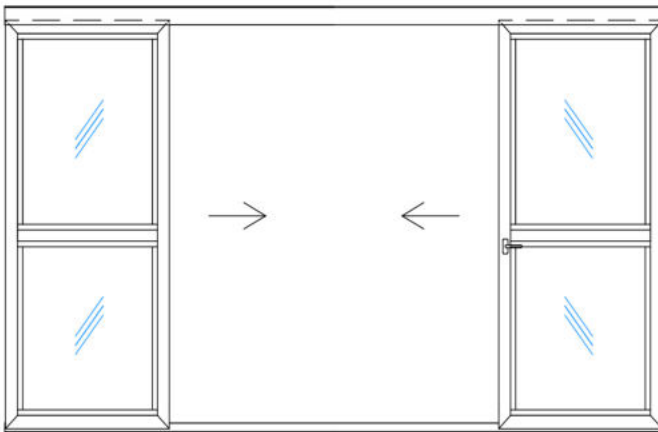
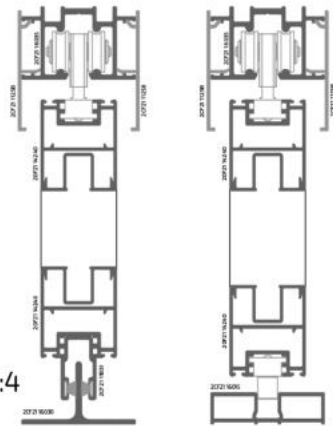
Echelle : 1:4



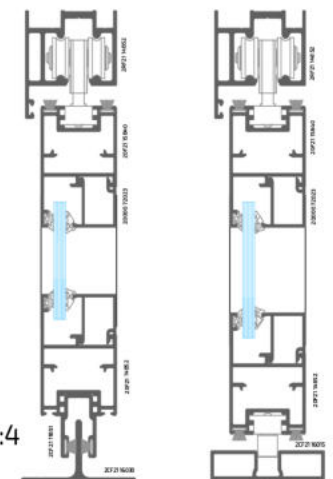
Echelle : 1:4



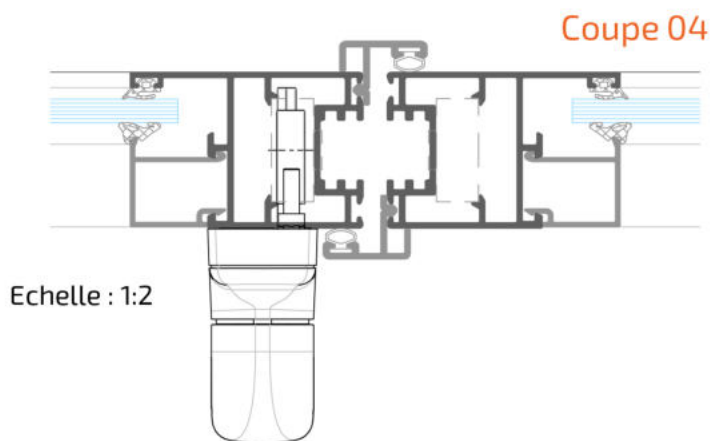
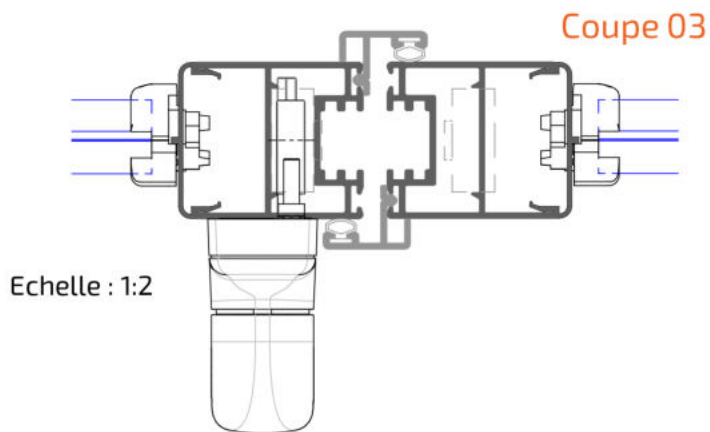
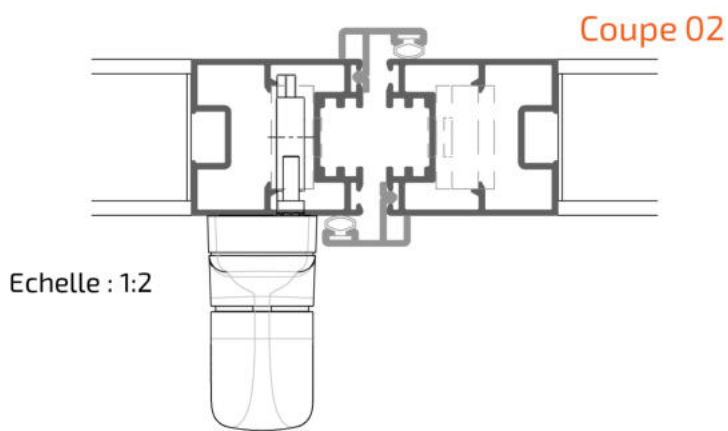
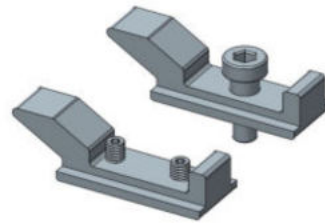
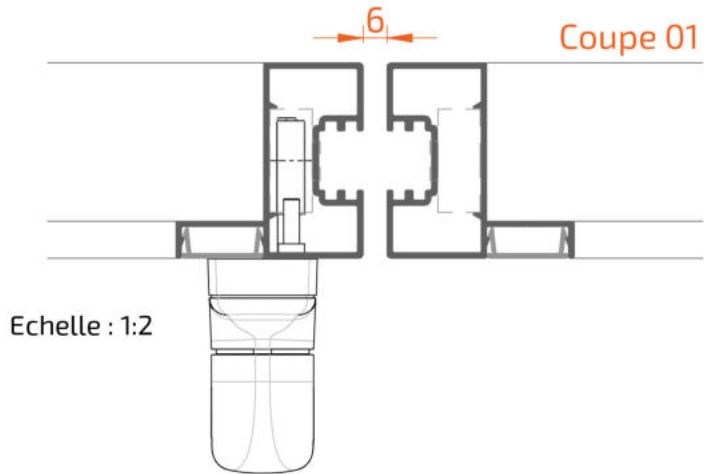
Echelle : 1:4

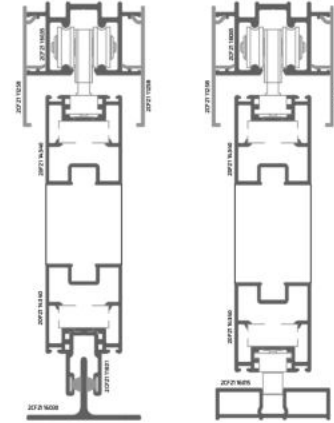
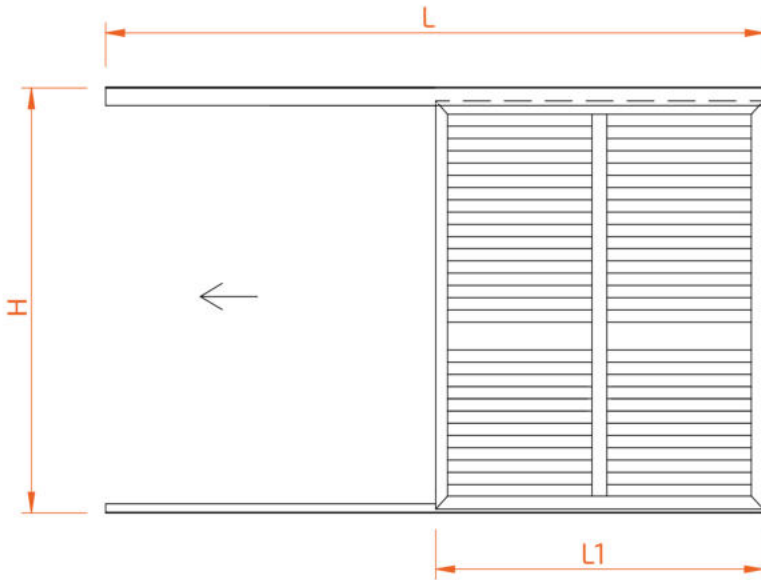


Echelle : 1:4

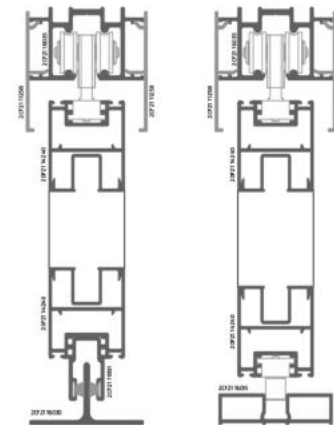
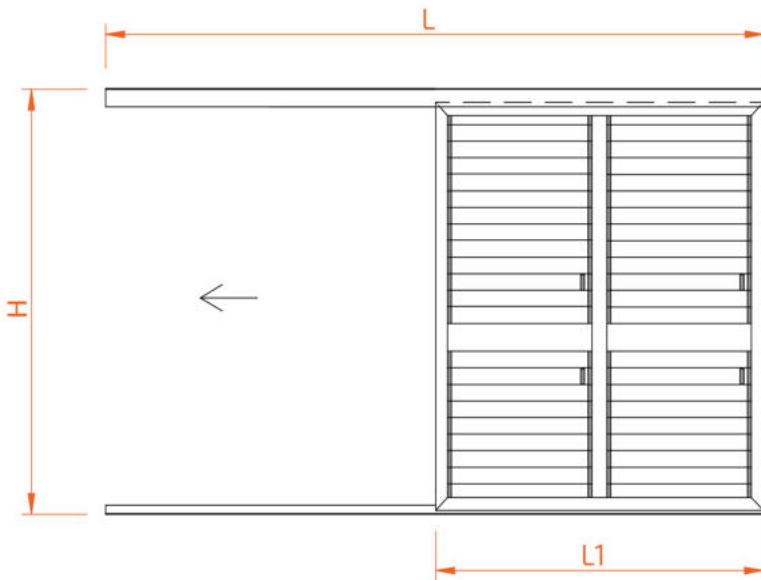
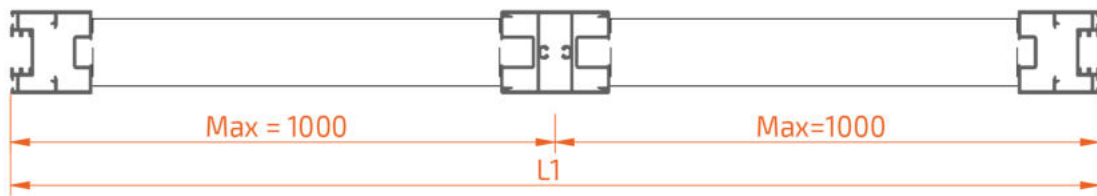


Coupes et débitages

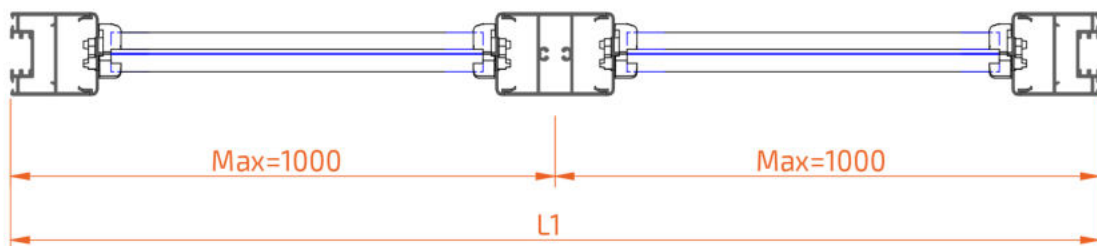




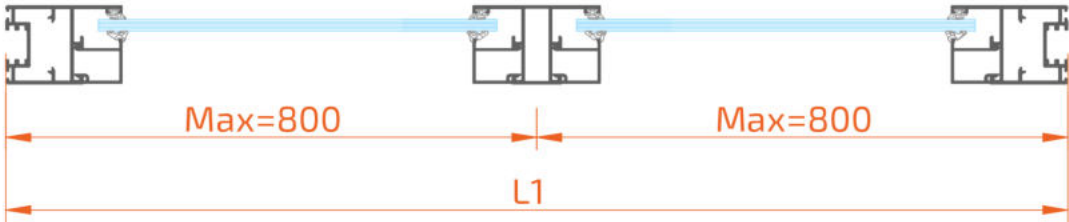
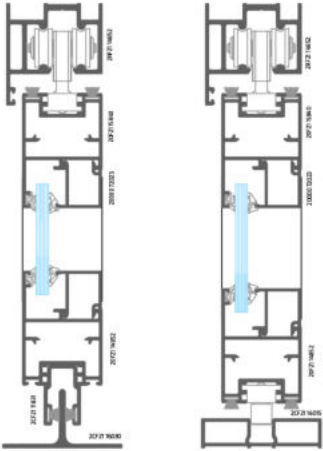
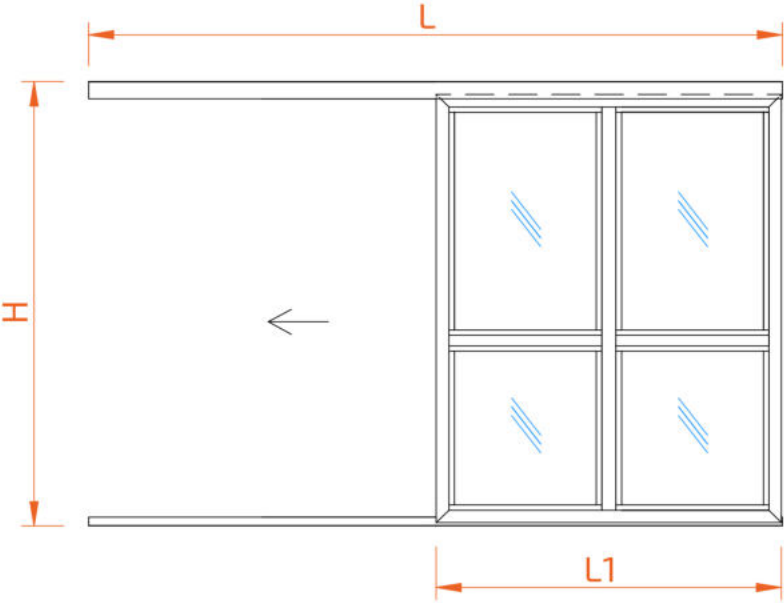
Echelle : 1:4



Echelle : 1:4

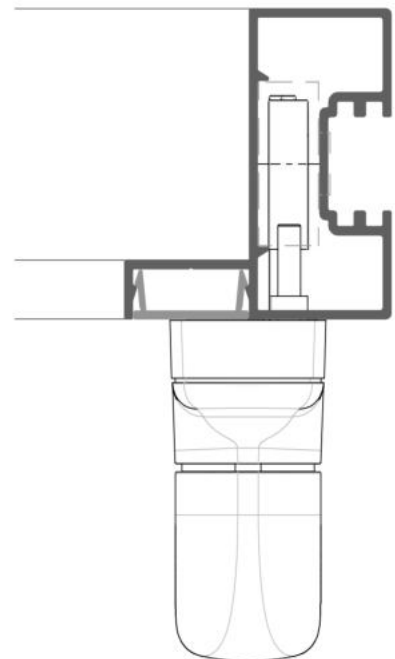
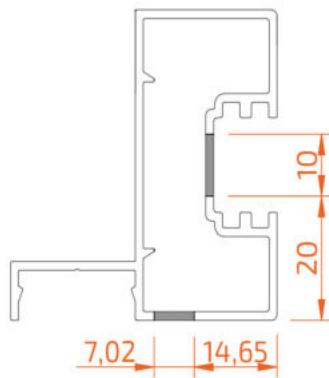
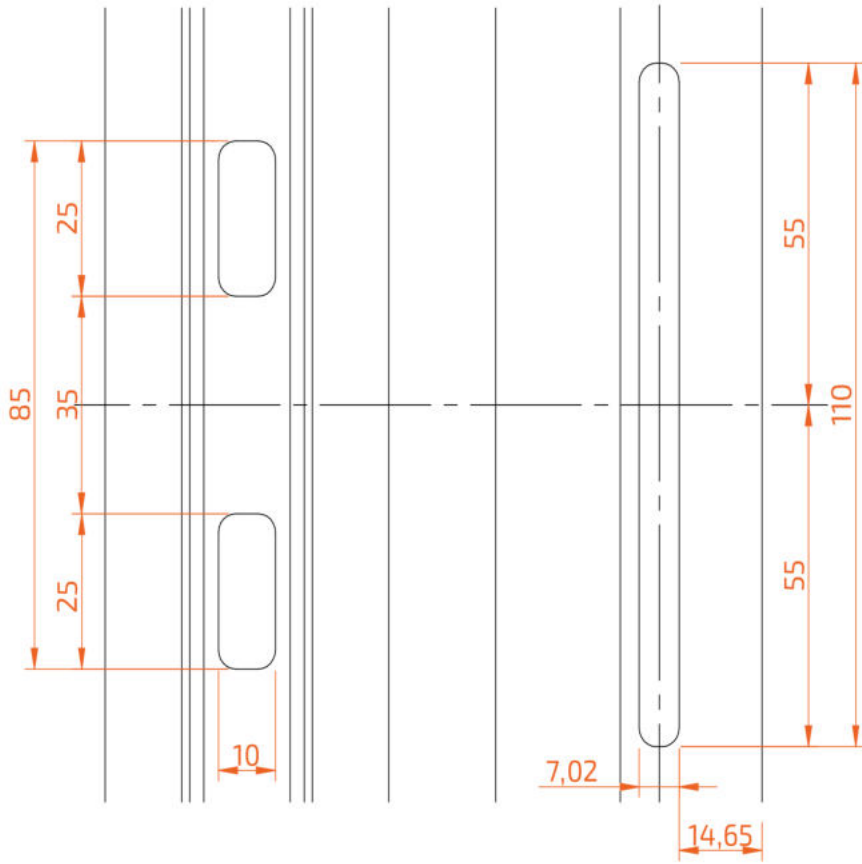


Coupes et débitages

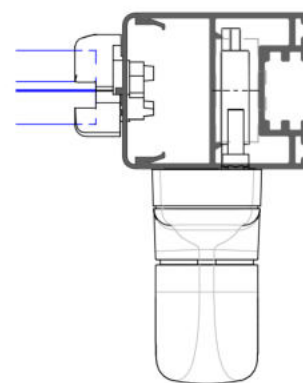
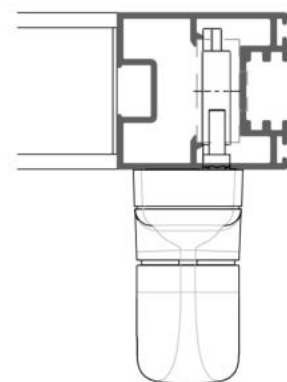
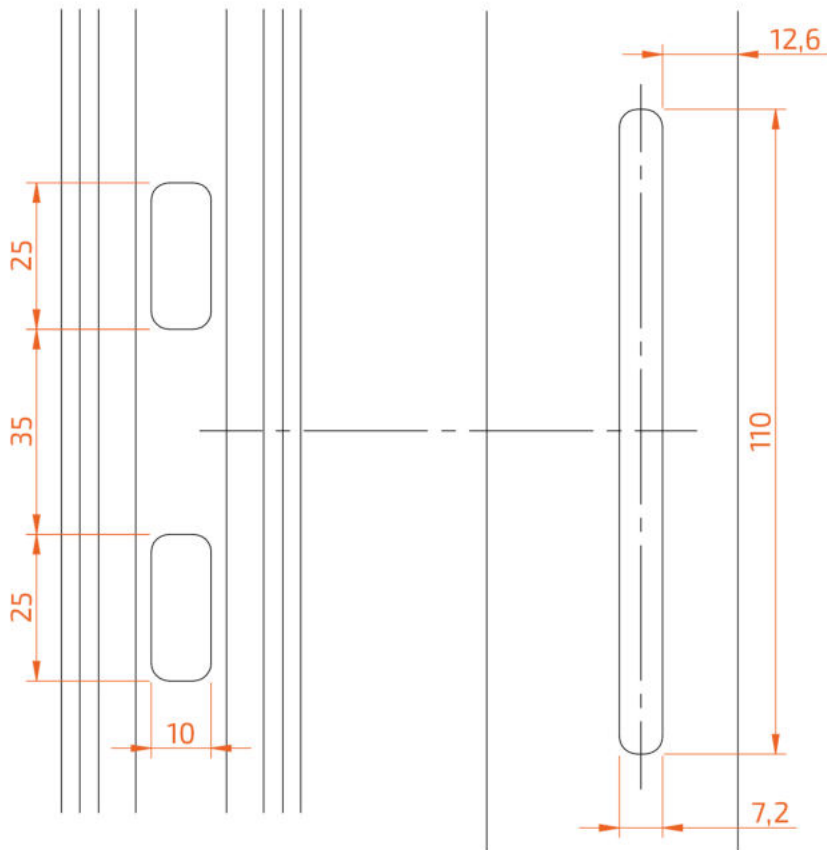


Usinage crémone 8XF21 81120

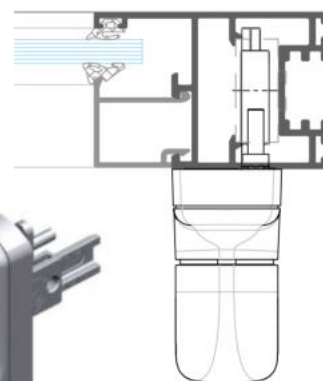
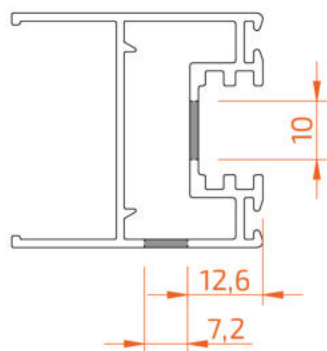
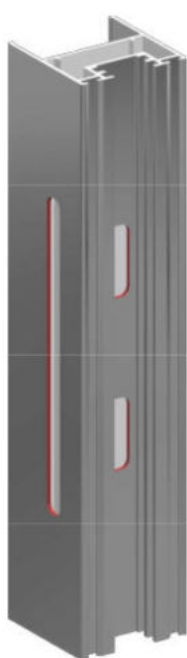
Echelle 1:3



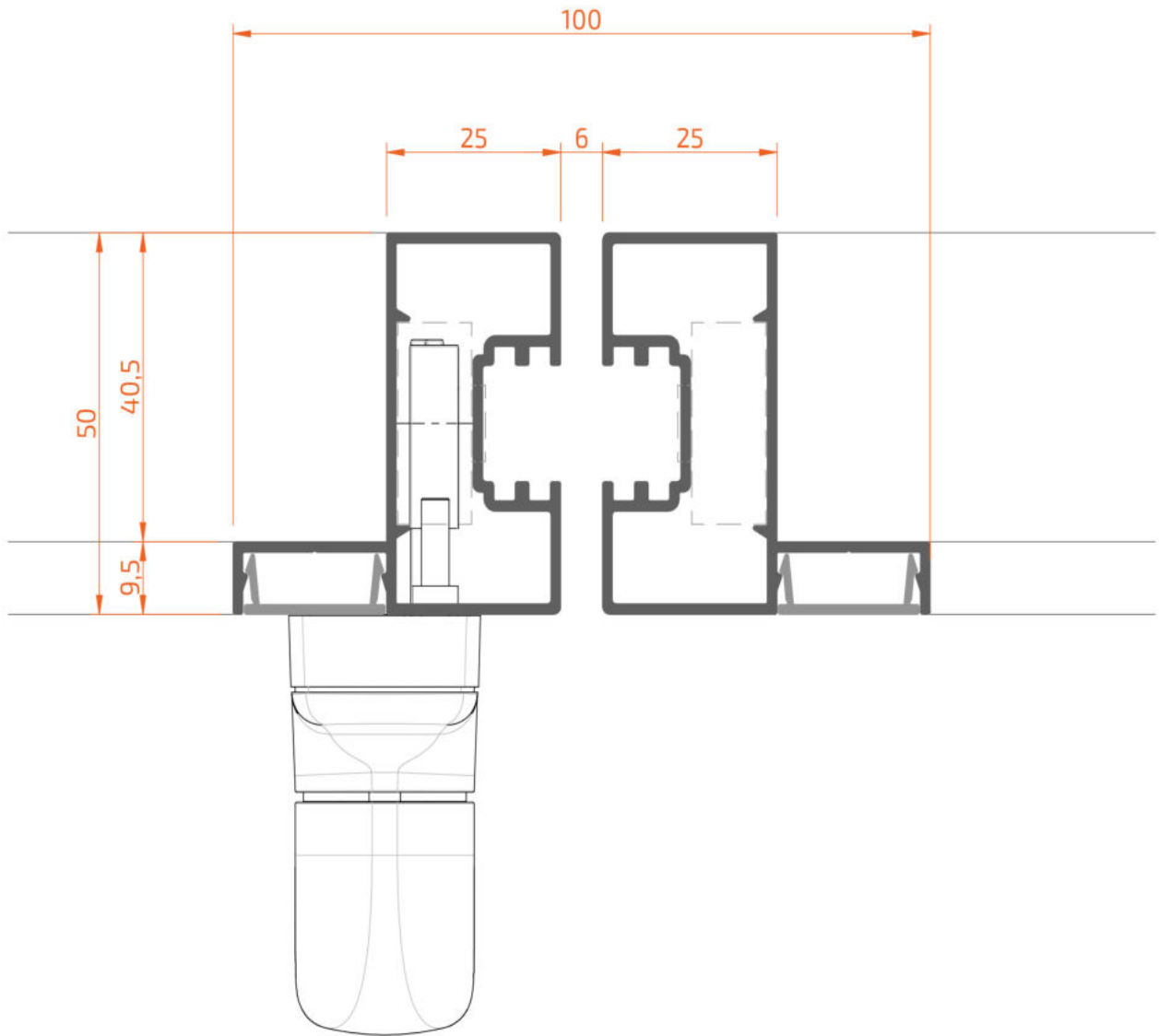
Usinage crémone 8XF21 81120



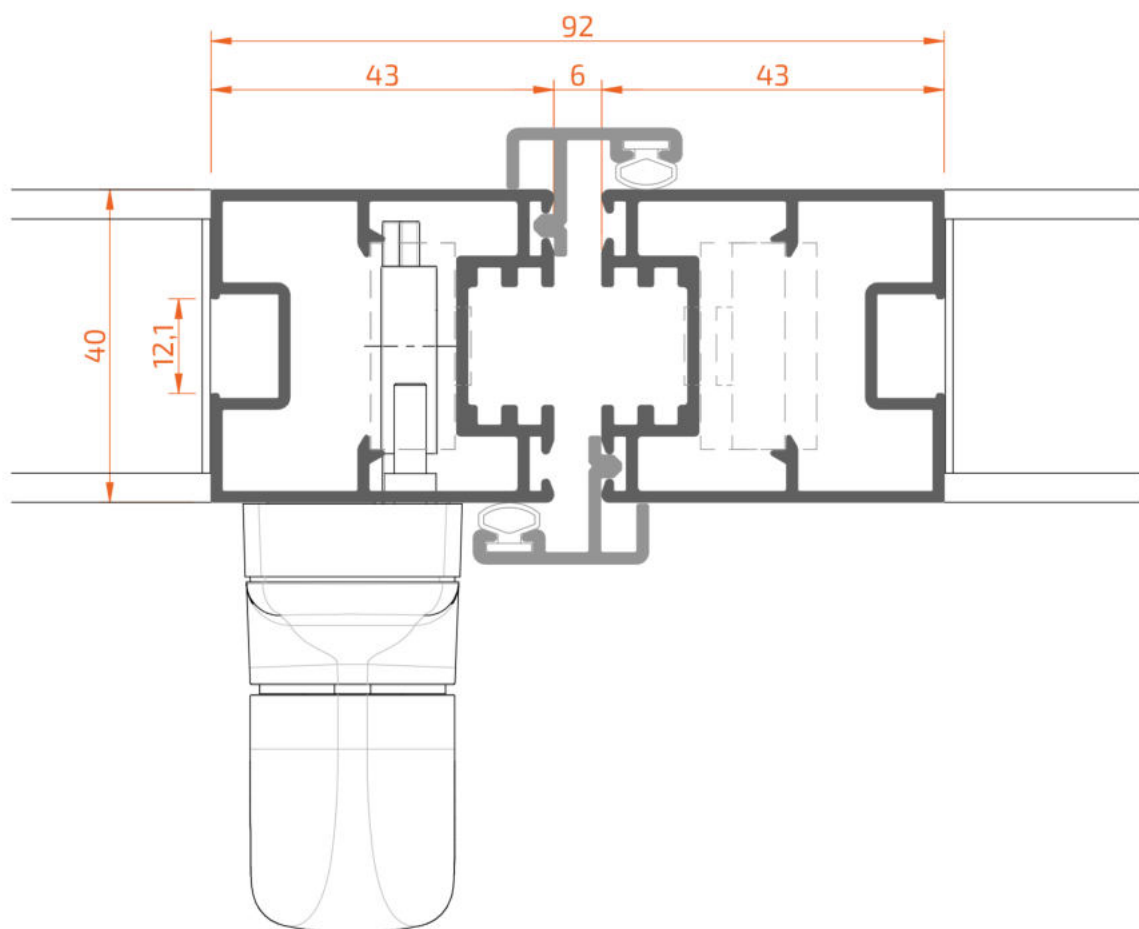
Echelle 1:3



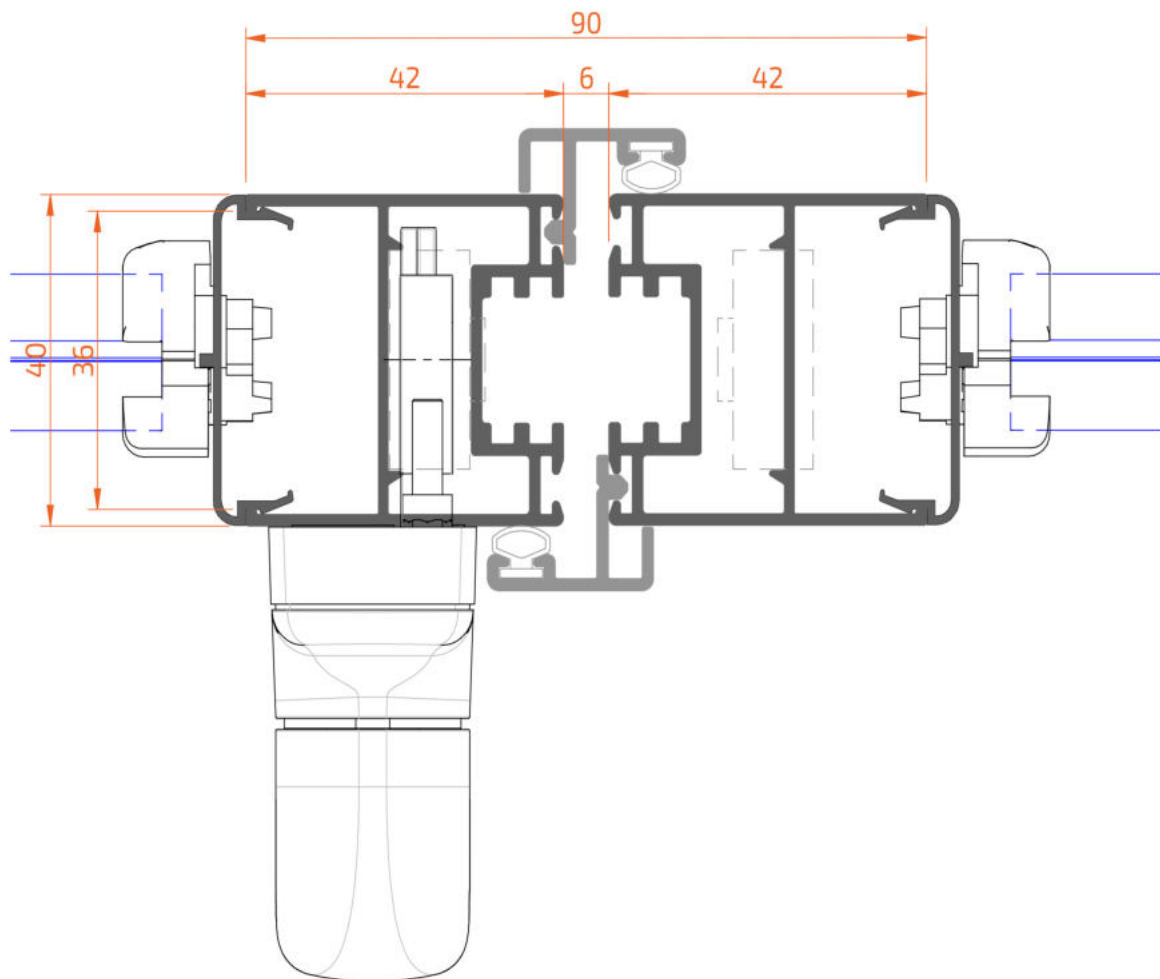
Coupe 01



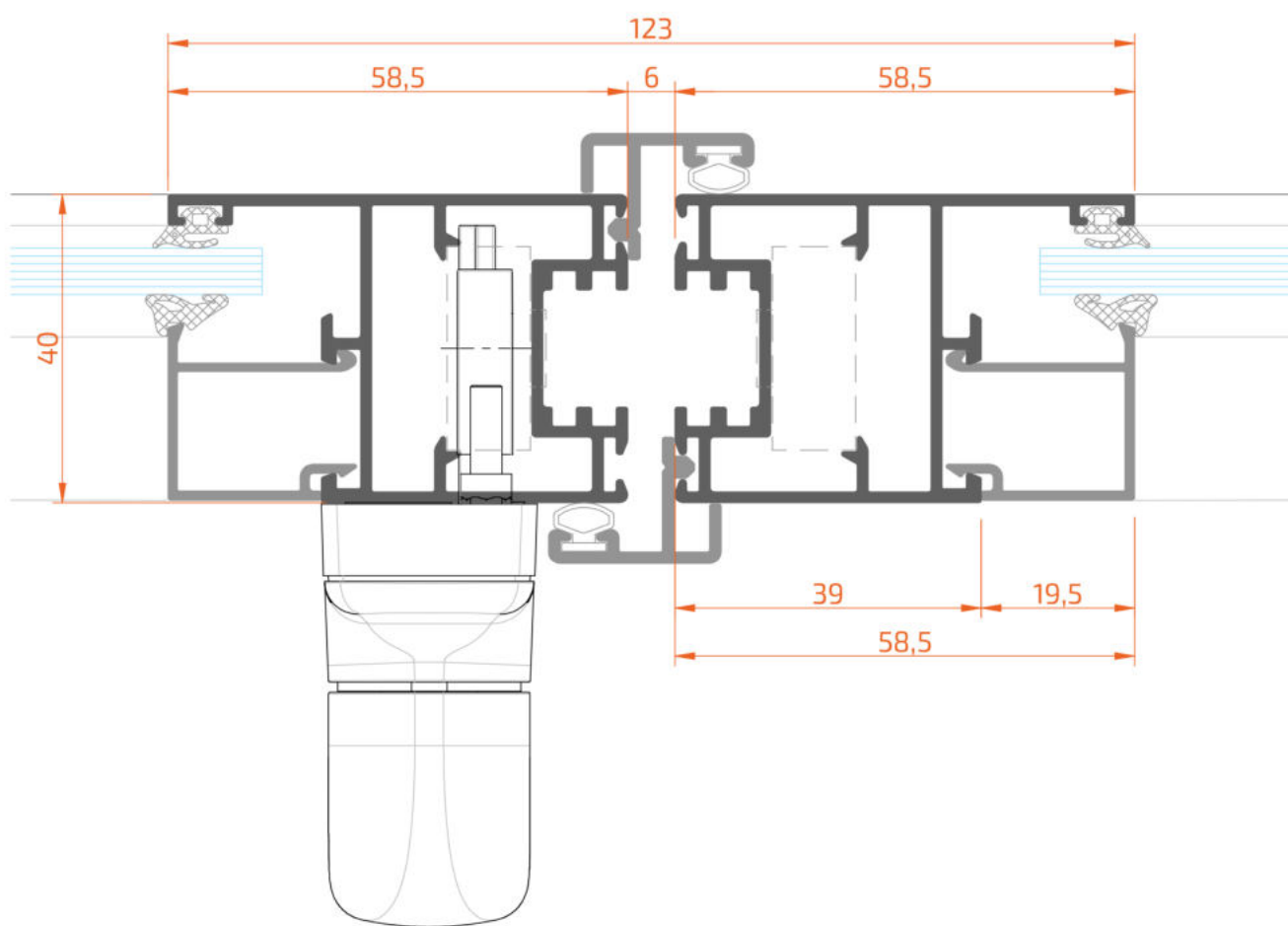
Coupe 02

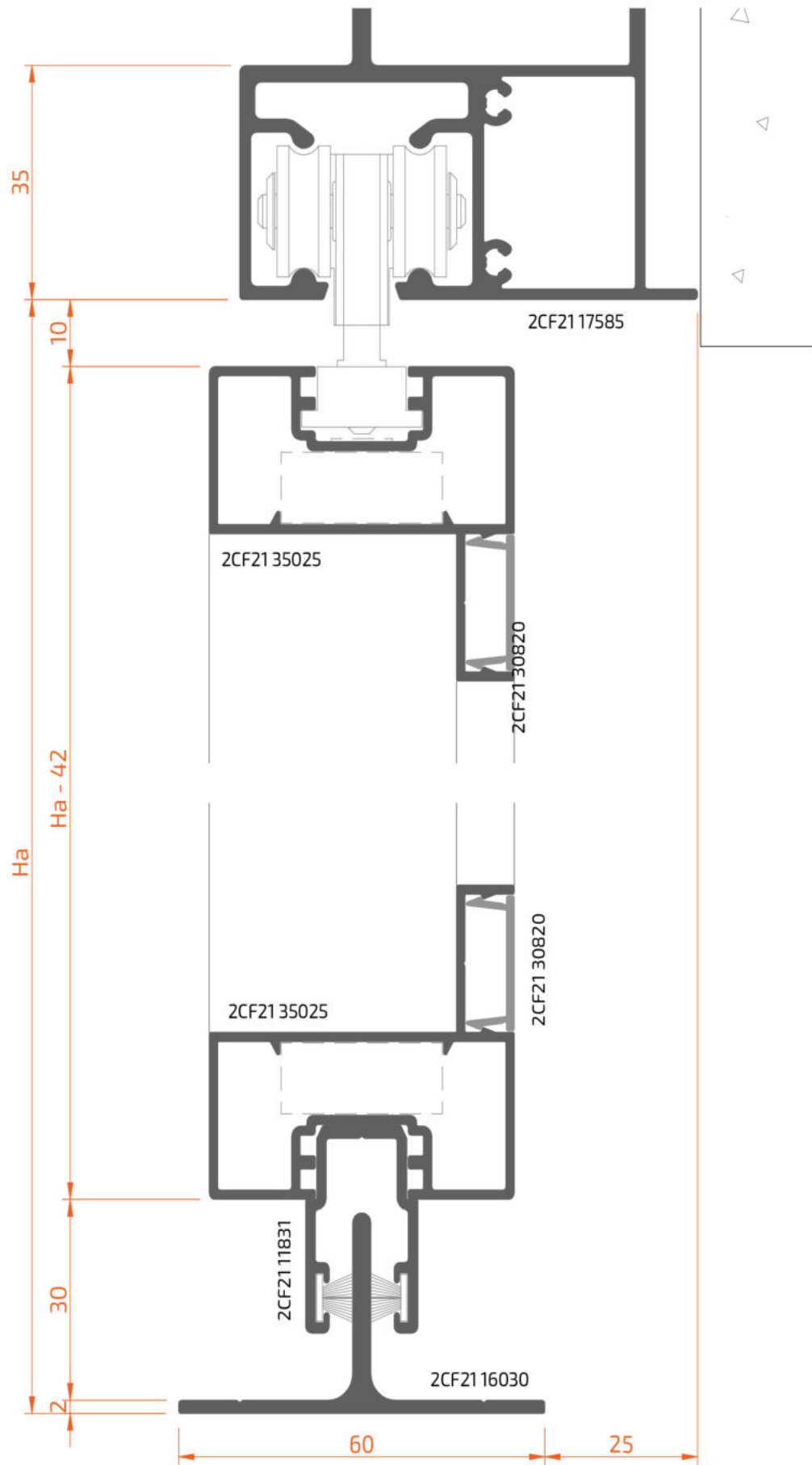


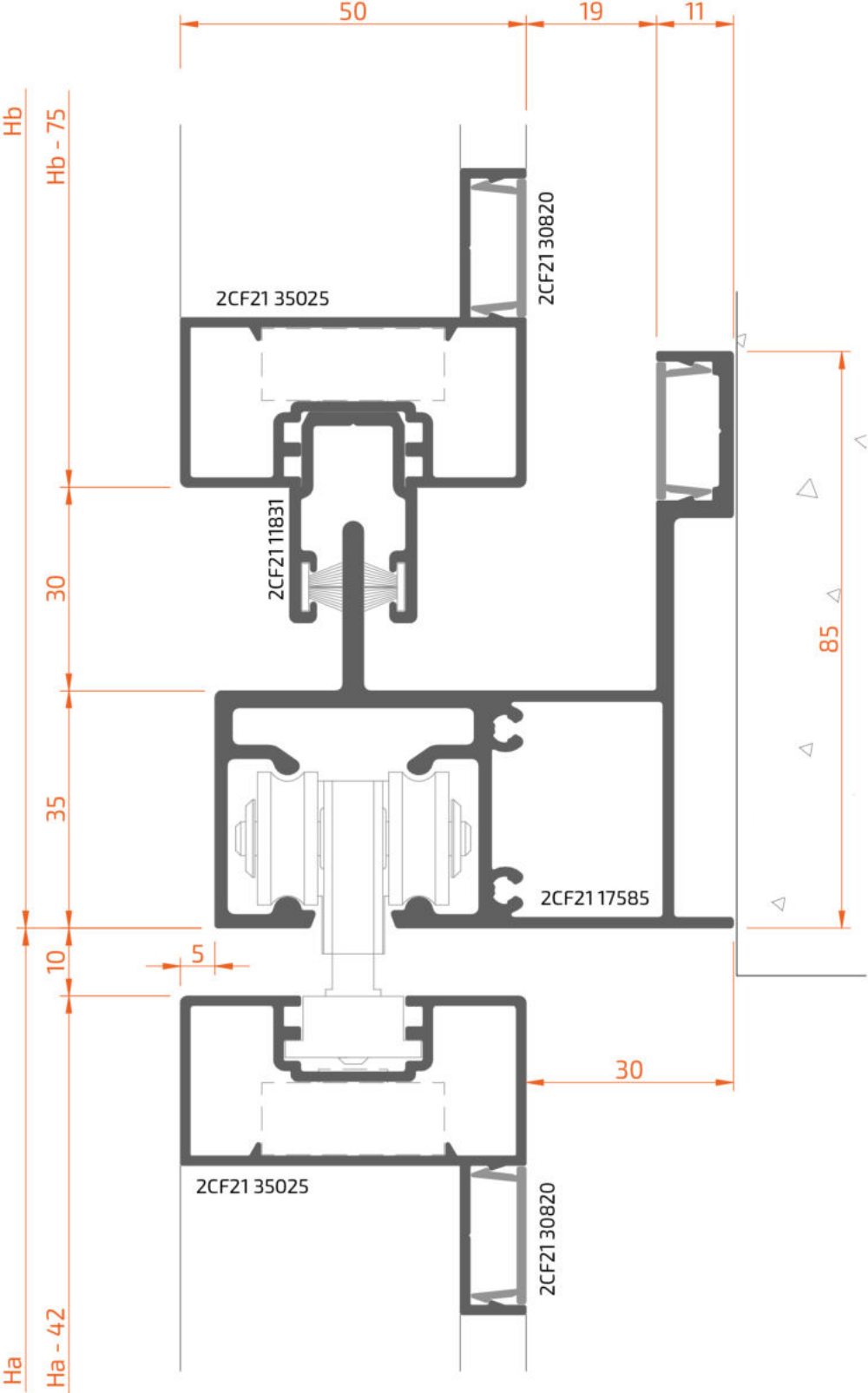
Coupe 03

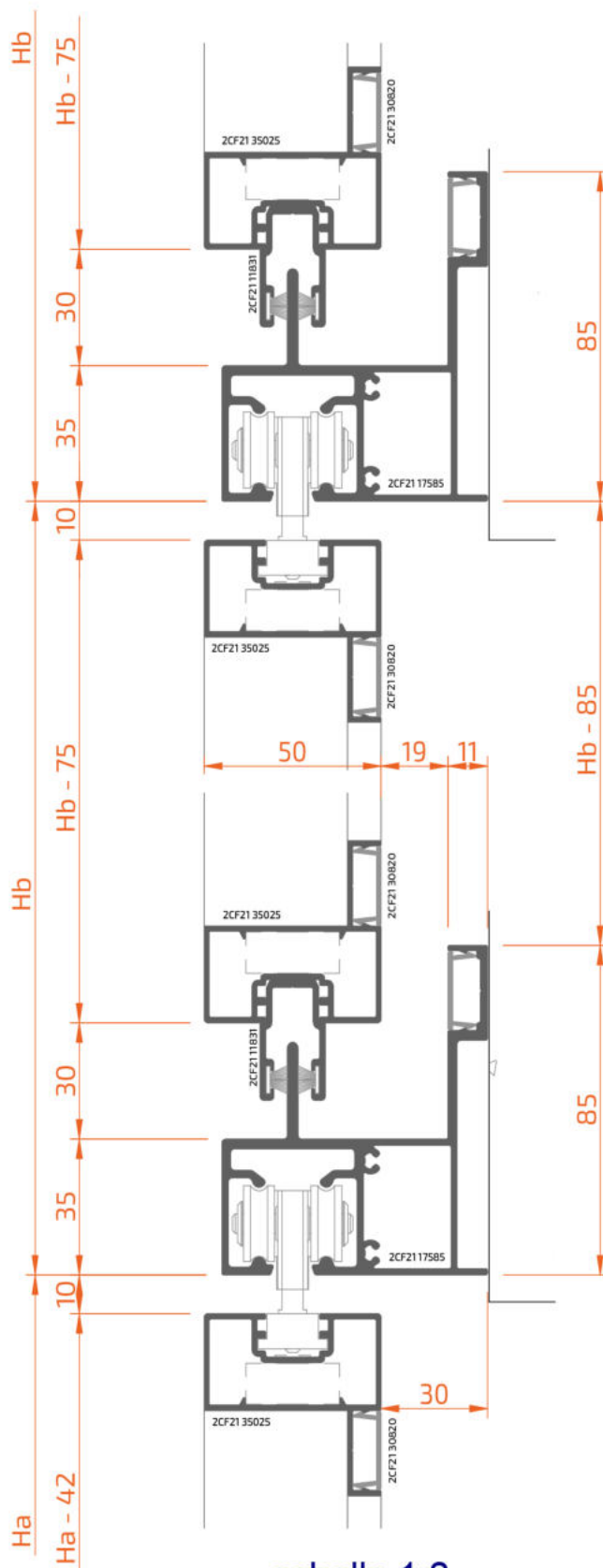


Coupe 04

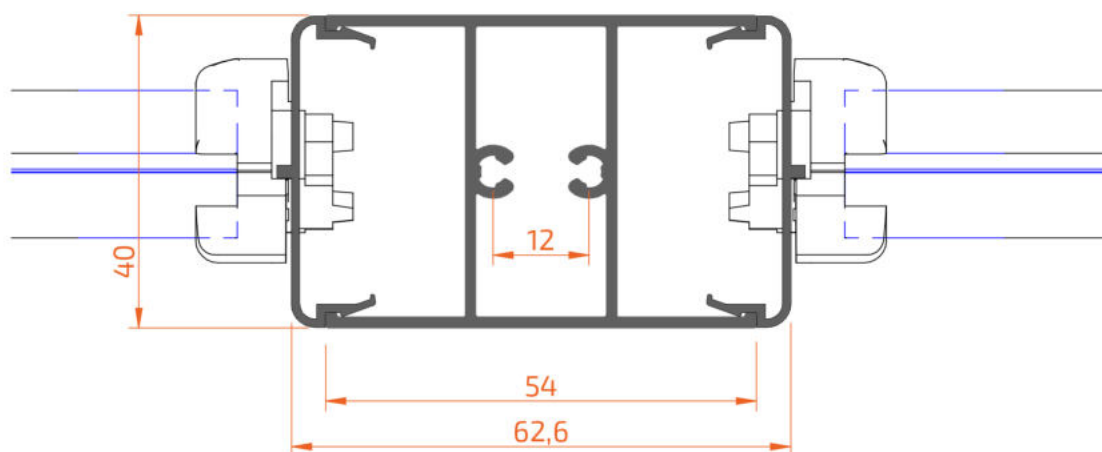
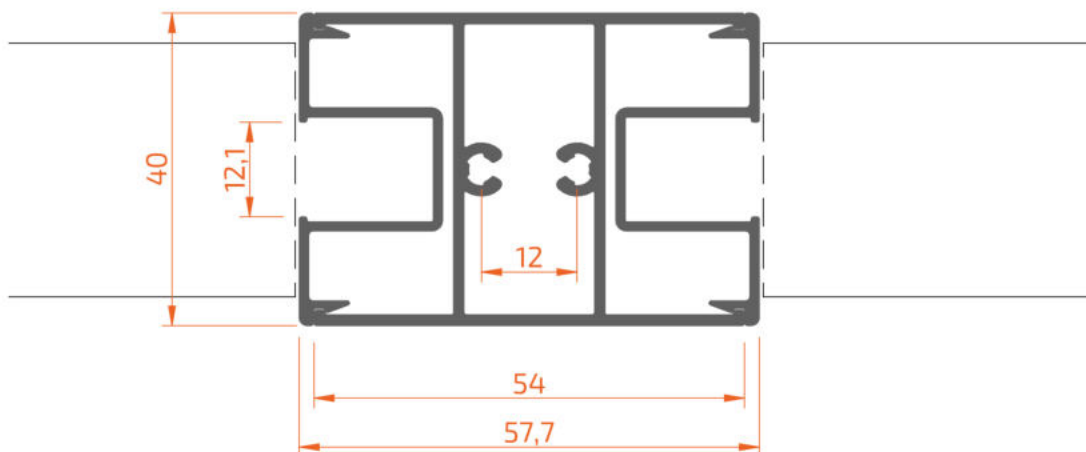




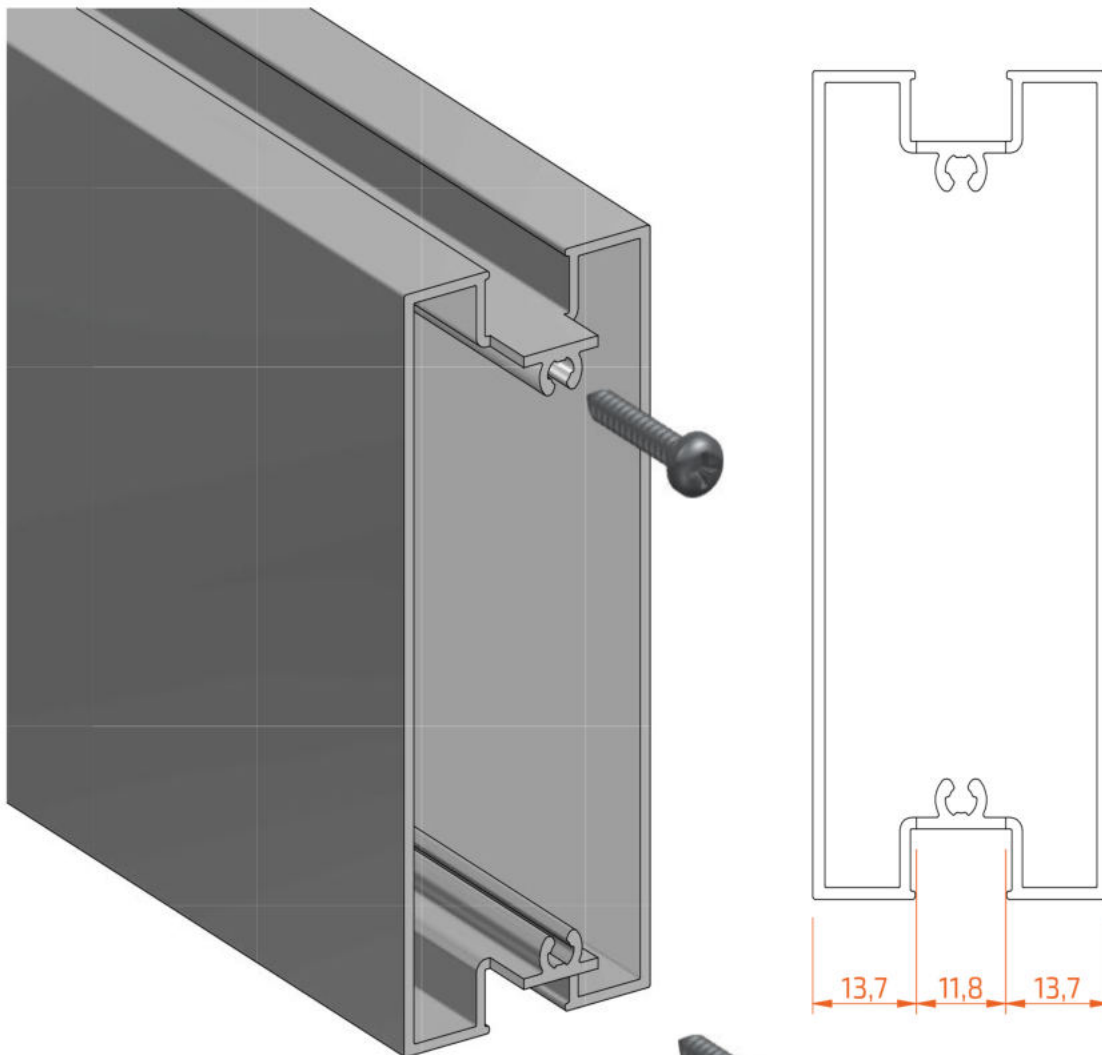




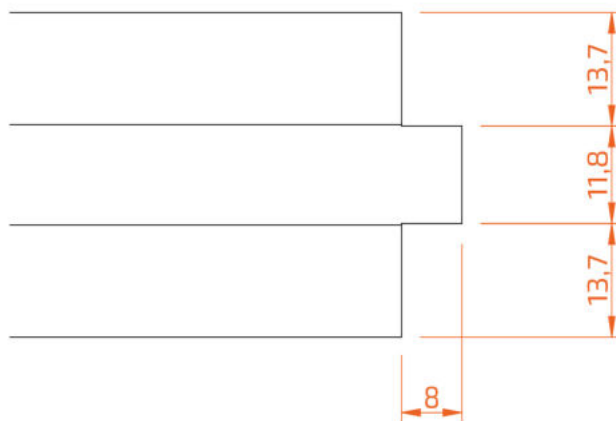
echelle 1:2



Usinage traverse 20F21 13910

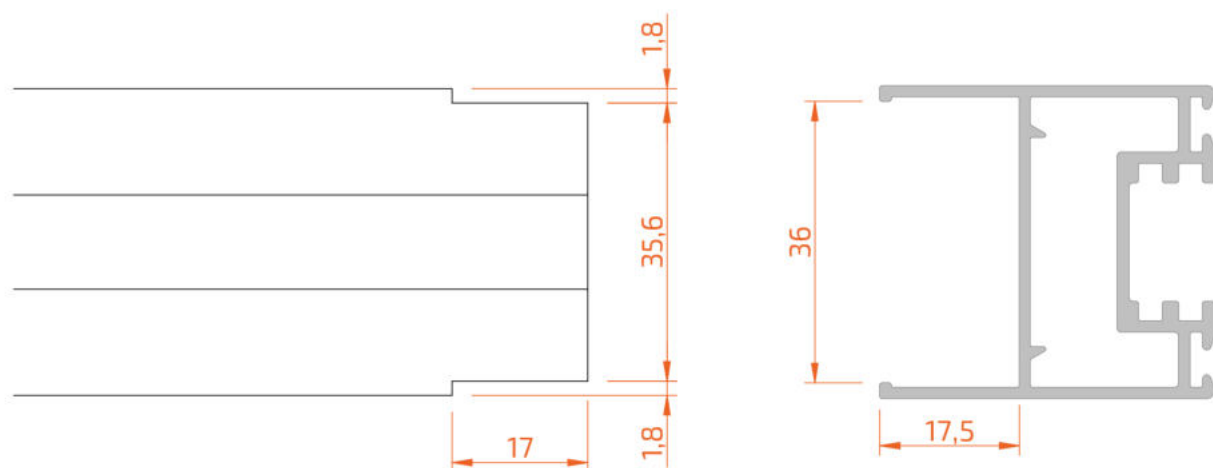
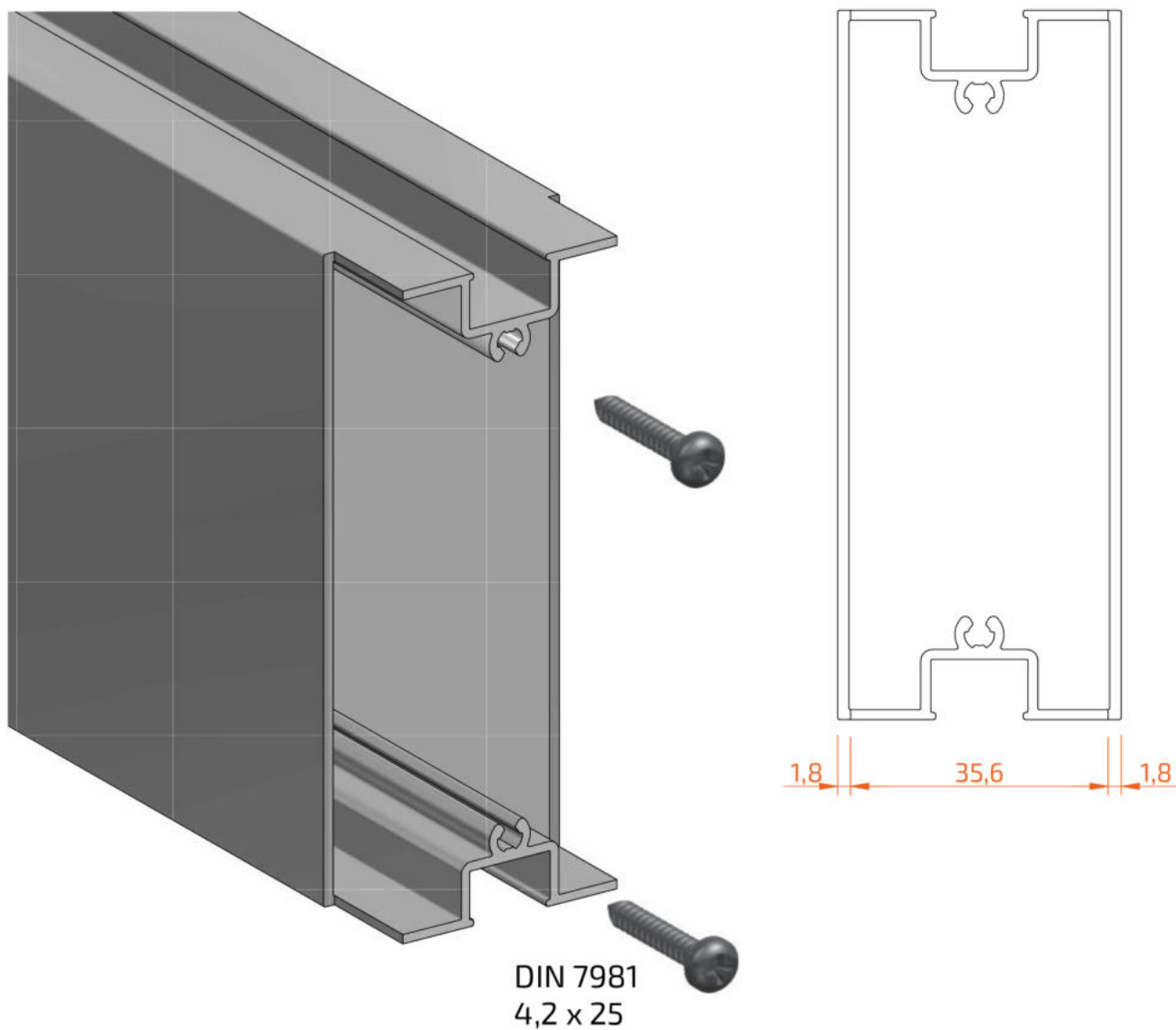


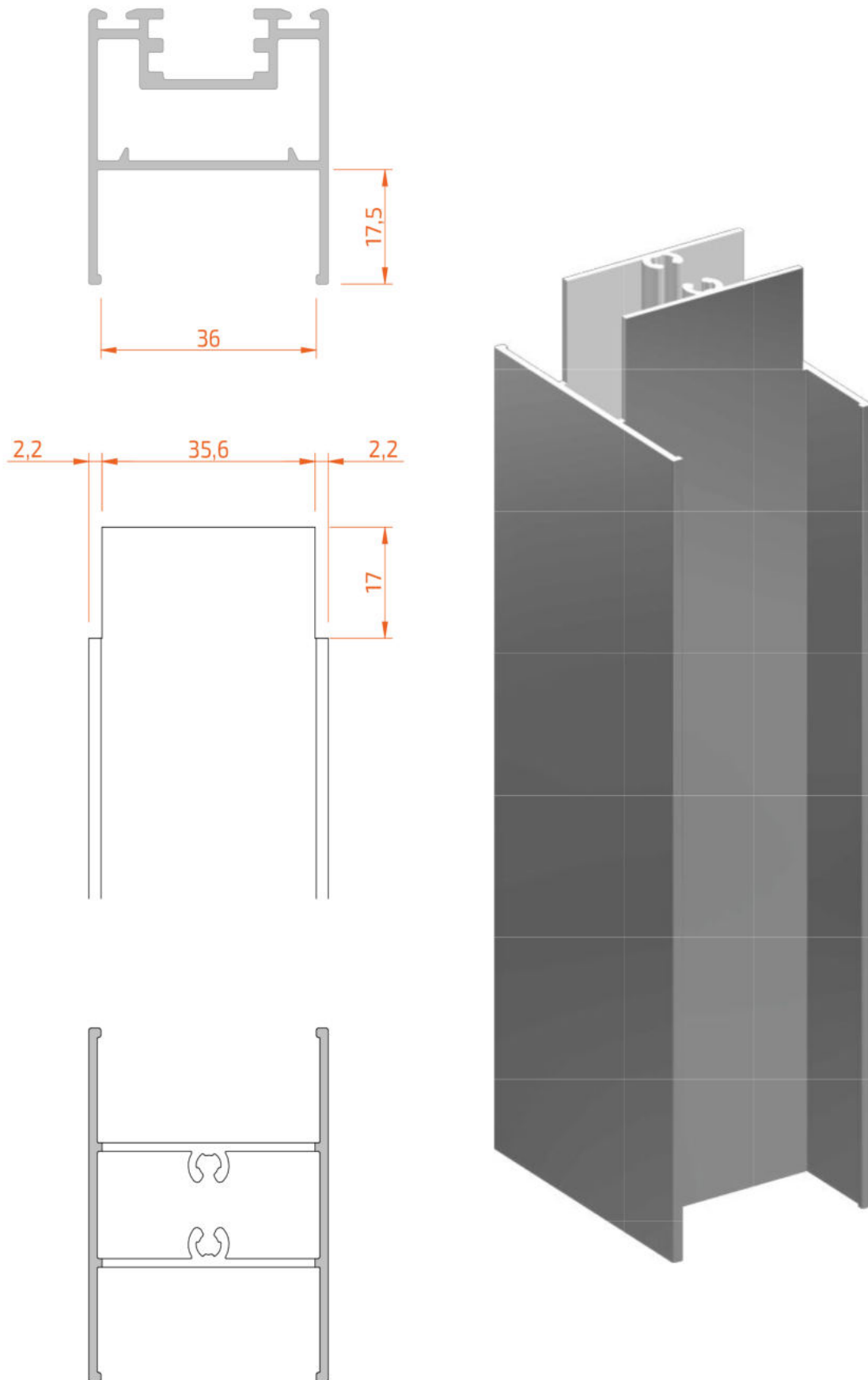
DIN 7981
4,2 x 25

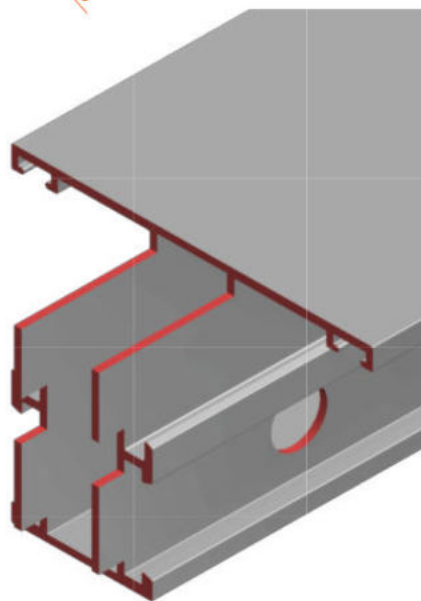
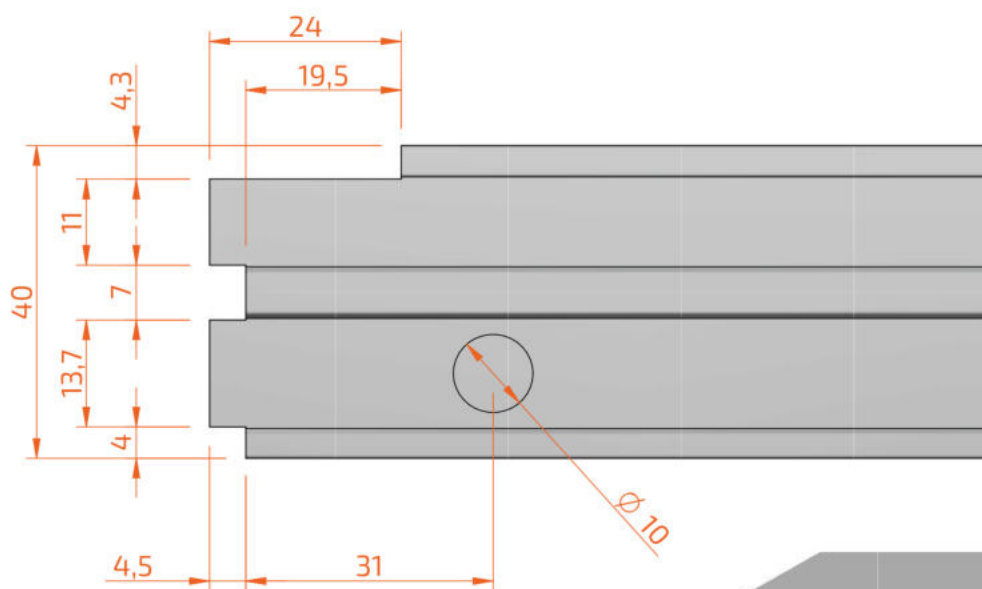
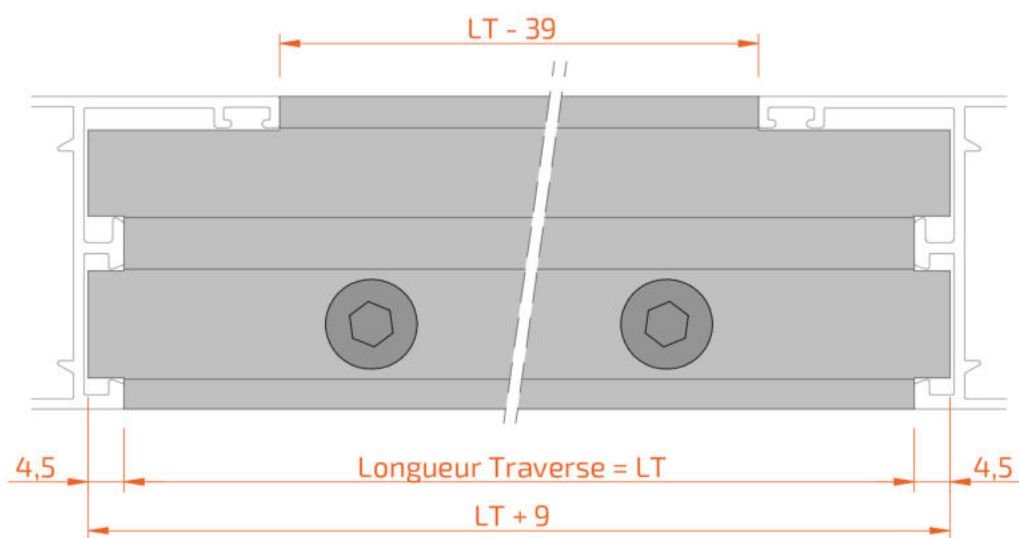


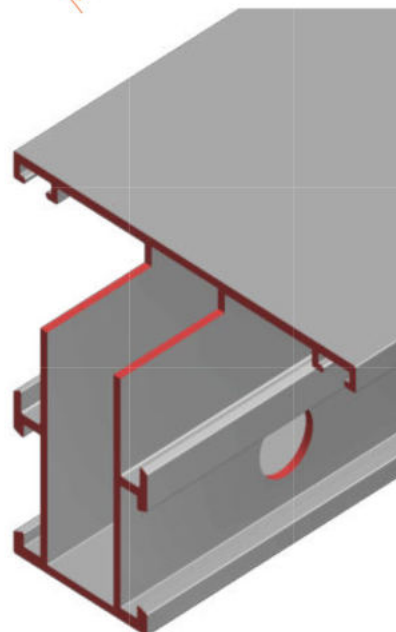
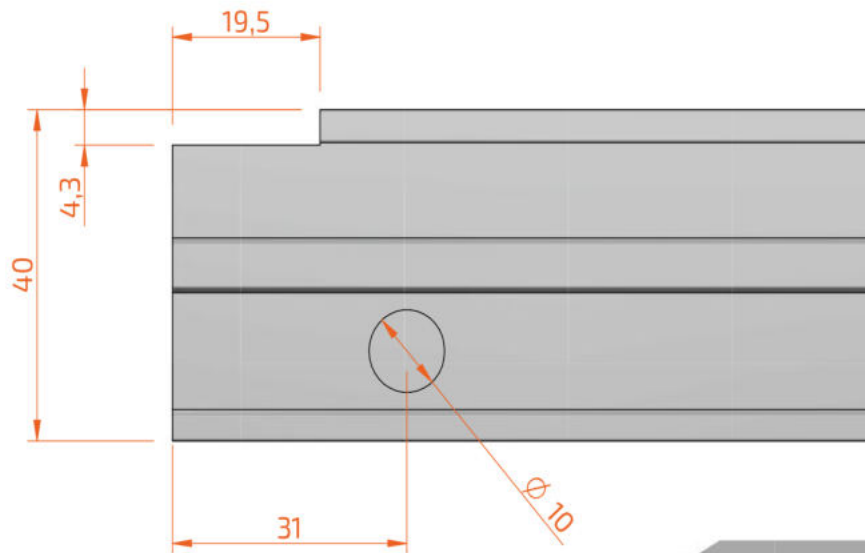
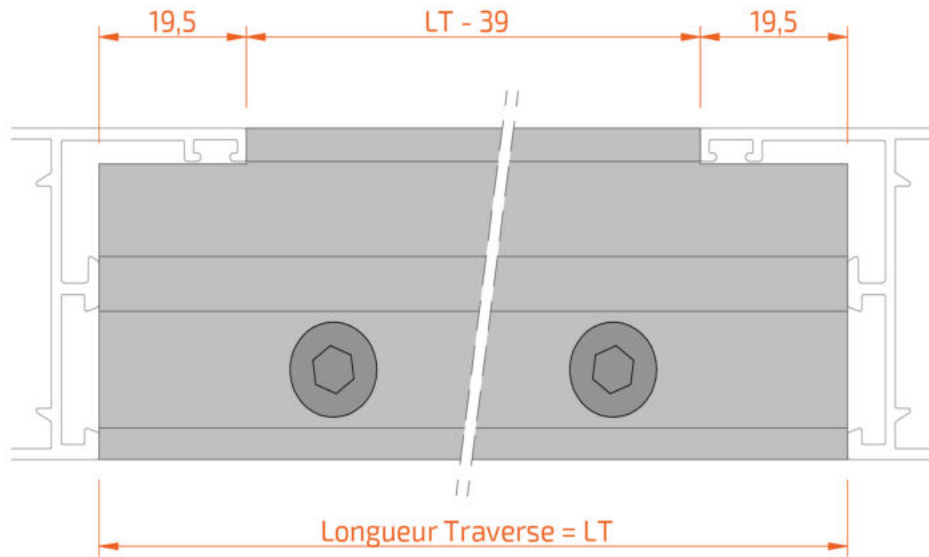
Autres détails

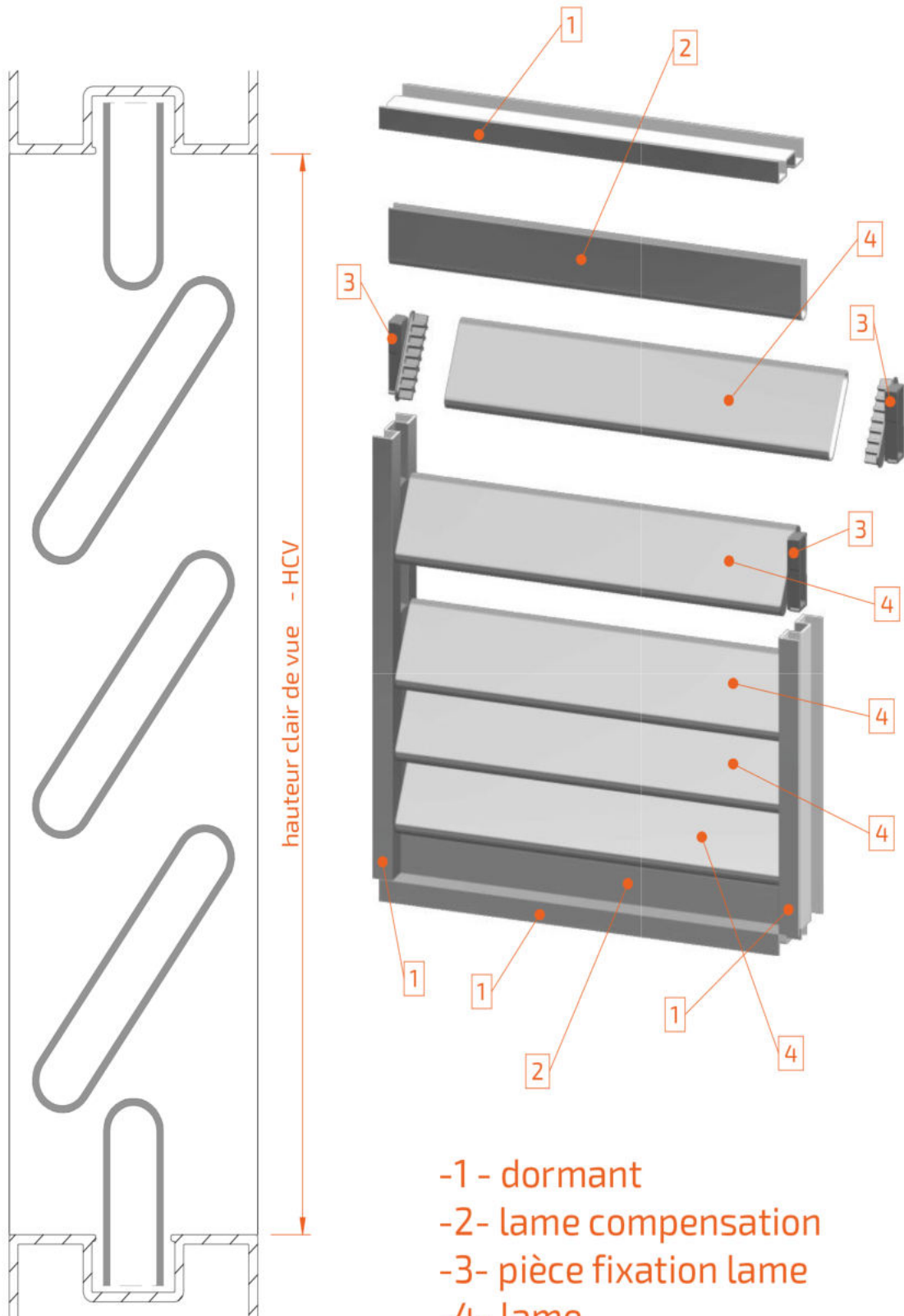
Usinage traverse 20F21 13910 attache à 20F21 14240







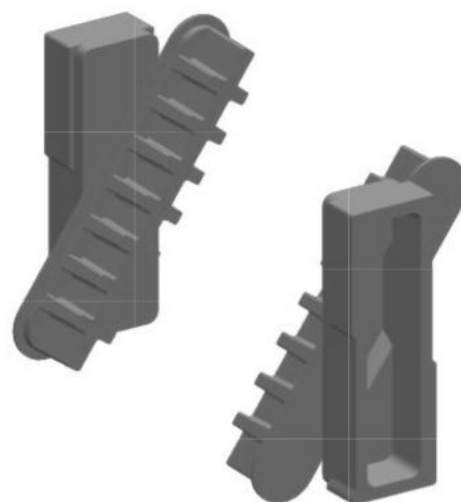
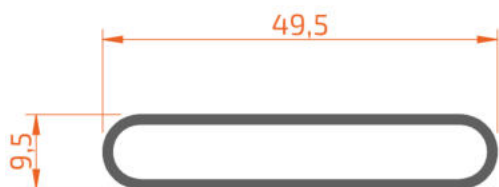






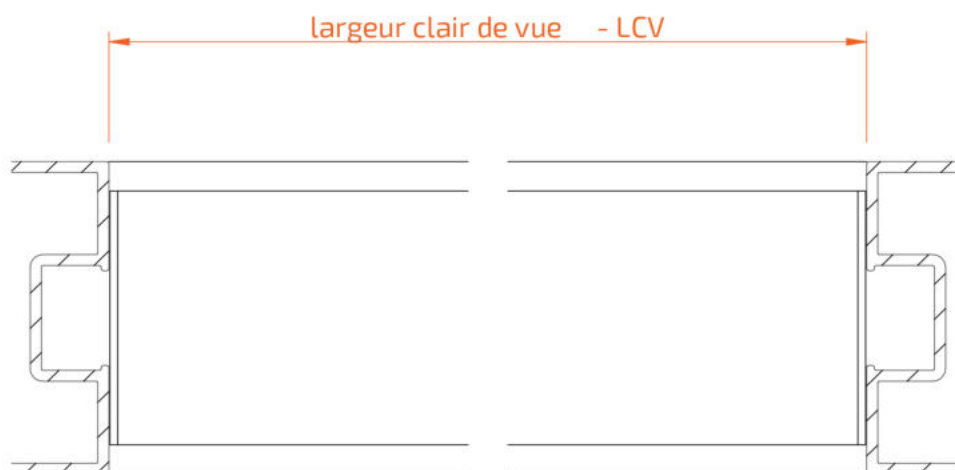
Autres détails

lame 20F21 00614

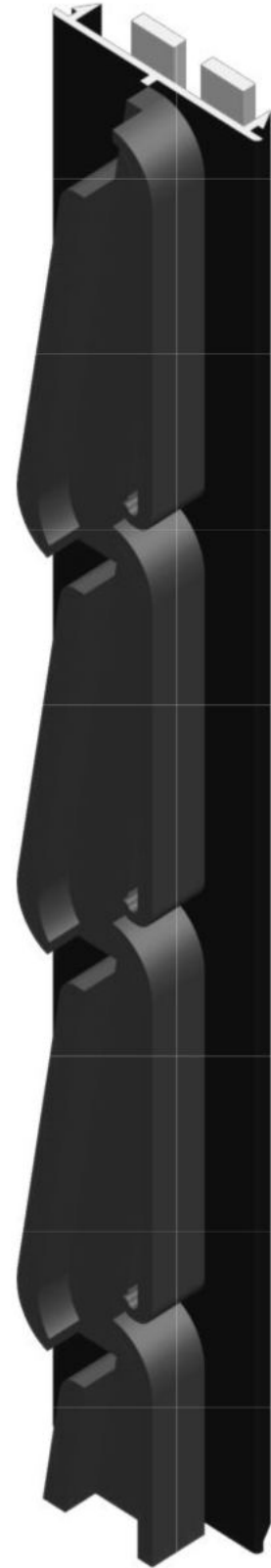
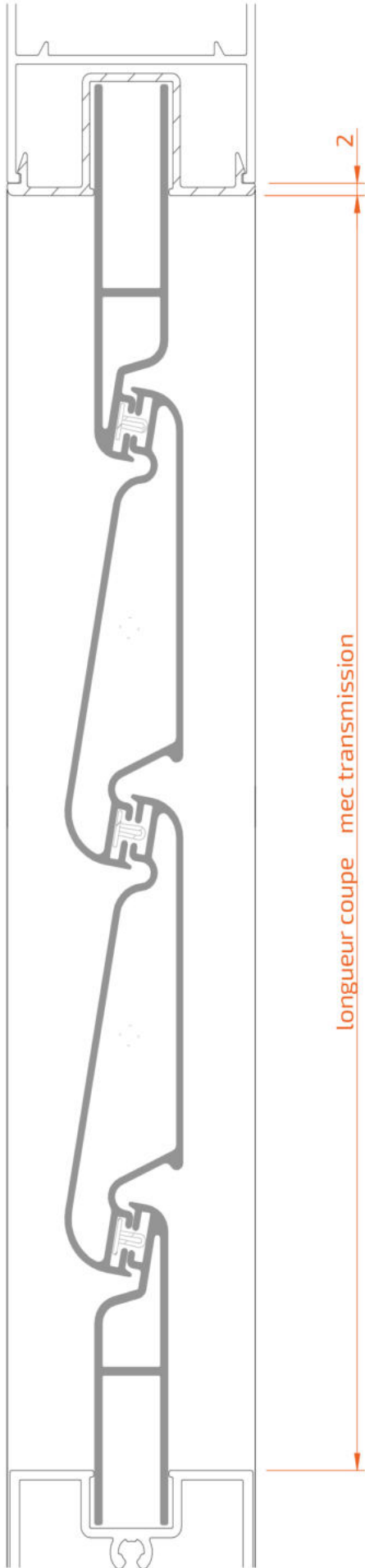
pièces fixation 4XX21 45010



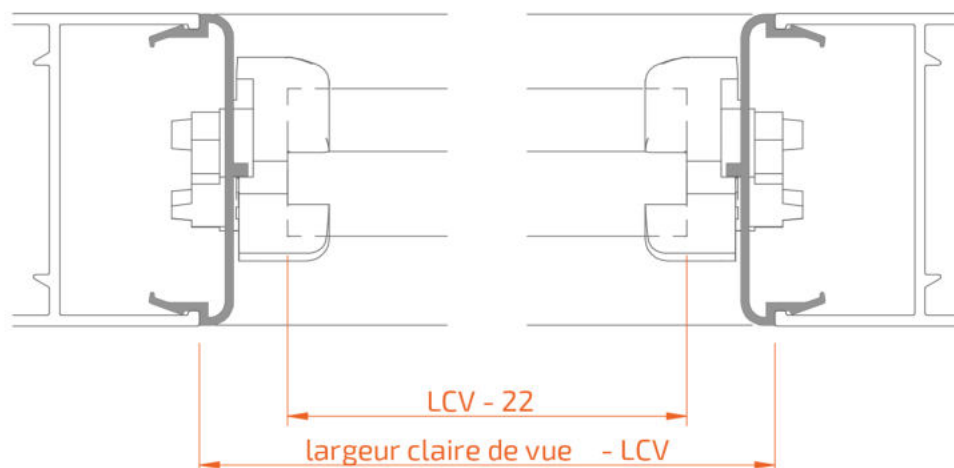
| Profil | Dessin | Coupe | Quantité | Formule |
|-------------|---|---|-----------------|----------|
| 20F21 00614 |  |  | 2 | LCV + 16 |
| | | | (HCV - 40) / 40 | LCV - 1 |



Lame Réglable



voir la vidéo de
procédure de
coupe du
mécanisme de
transmission



| Profil | Dessin | Coupe | Quantité | Formule |
|-------------|--------|-------|----------------|----------|
| 20F21 01512 | | | 1 | LCV |
| 20F21 05712 | | | 2 | LCV - 10 |
| 20F21 07119 | | | voir mecanisme | LCV - 22 |



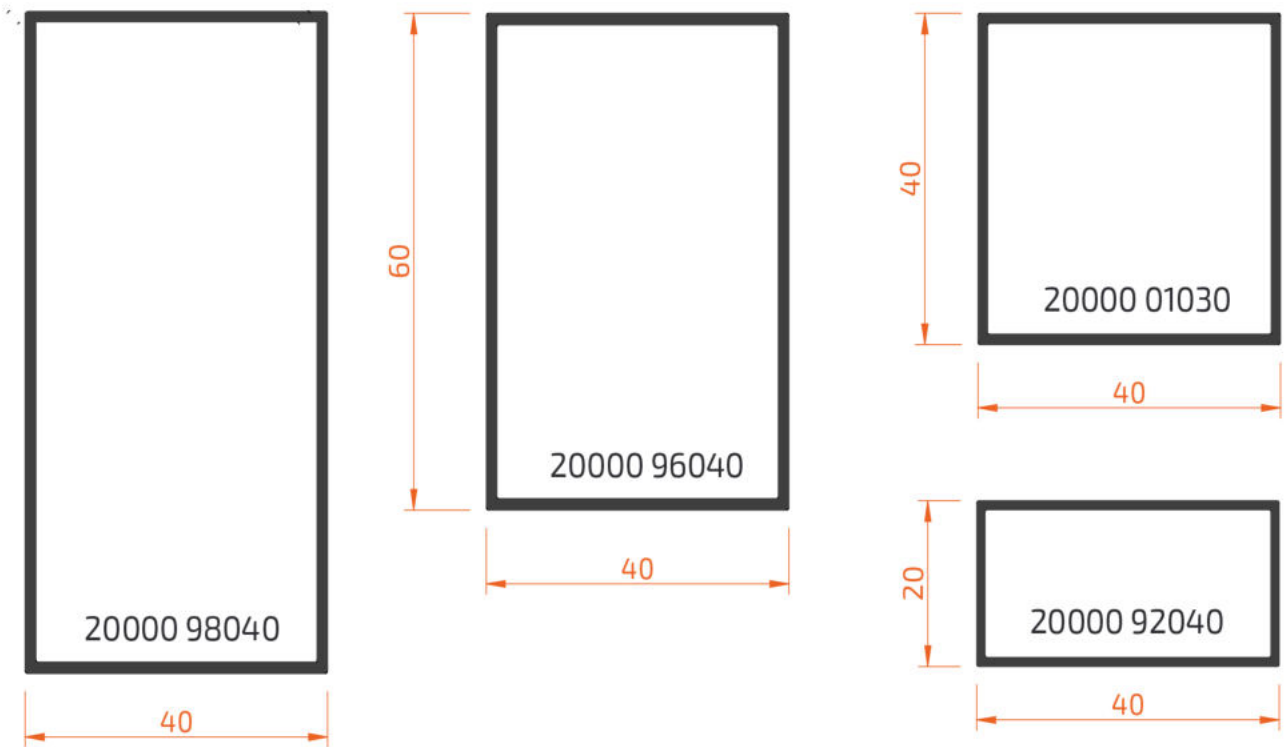
4XX21 68020
ensemble de pièces
terminales de mécanisme



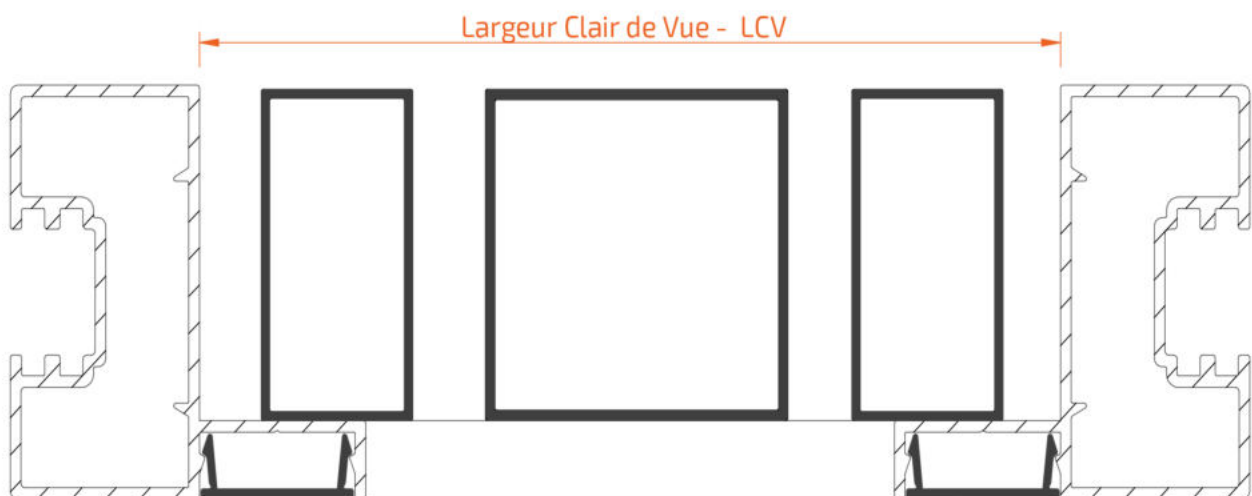
4XX21 68030
poignée Slitta
lame réglable



4XX21 28030
joint lame réglable



| Profil | Dessin | Coupe | Quantité | Formule |
|-------------|--------|-------|----------|---------|
| 20000 92040 | | | Aprox | LCV |
| 20000 01030 | | | Aprox | LCV |
| 20000 96040 | | | Aprox | LCV |
| 20000 98040 | | | Aprox | LCV |





HASNAOUI PROFILE SYSTEMS

B. P. 245, Zone Industrielle Sidi Bel-Abbès 22000, Algérie
Tél : +213 (0) 48 70 66 19 / +213 (0) 48 70 66 20
Fax : +213 (0) 48 70 66 19
E-Mail : info@hps-dz.com

