



CATALOGUE TECHNIQUE

Série Coulissante



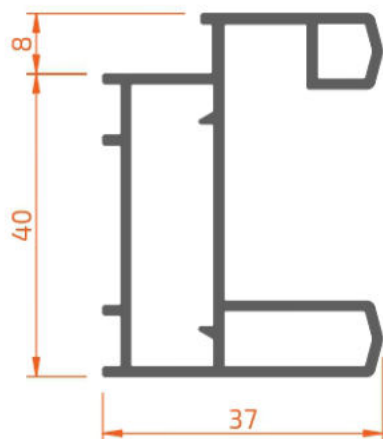
H31



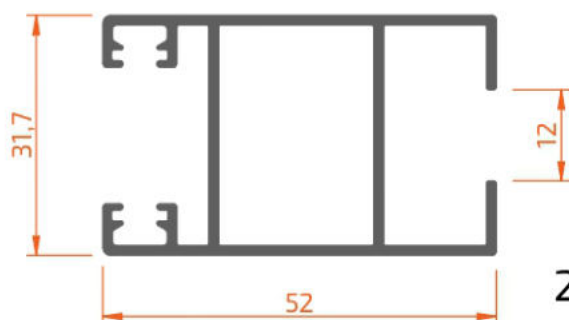
Différents modèles et finitions sont disponibles

Index	Profils	1.01
	Accessoires	2.01
	Vitrages	3.01
	Coupes et débitages	4.01
	Sections echelle 1:1	5.01
	Autres détails	6.01

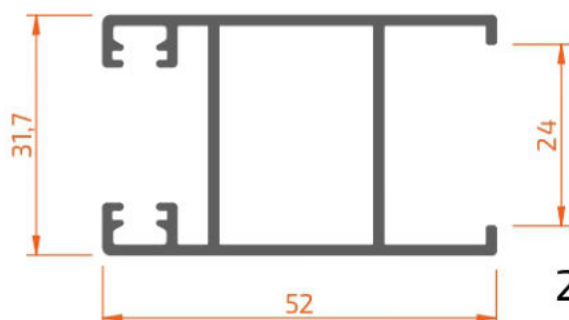
Éprouvez de Nouvelles Sensations



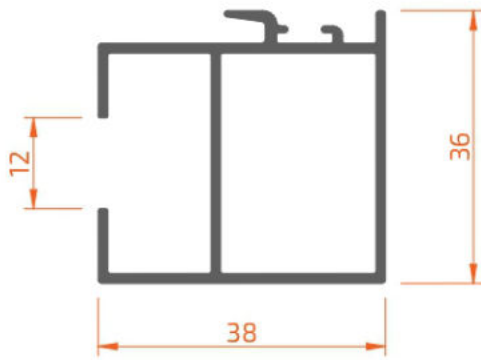
2CF31 14037



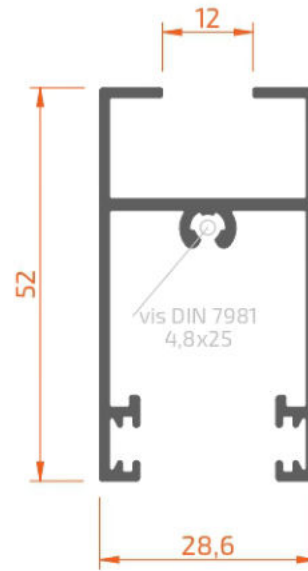
2CF31 31231



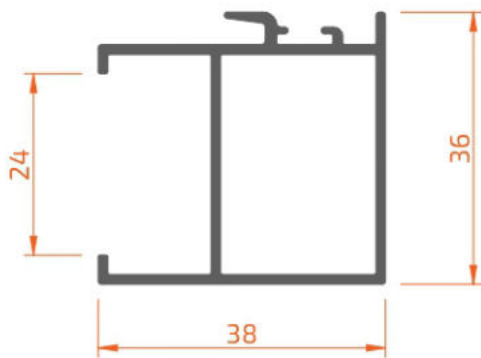
2CF31 32431



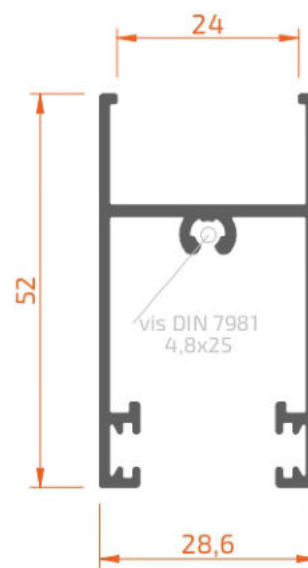
2CF31 31236



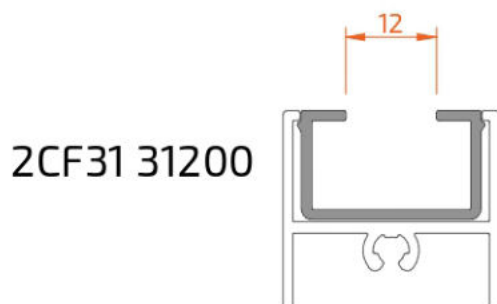
2CF31 31252



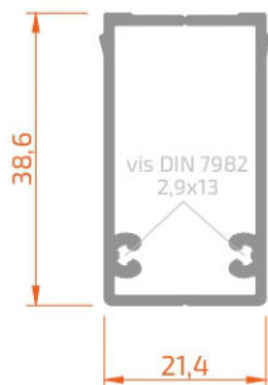
2CF31 32436



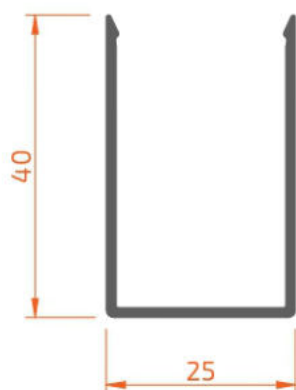
2CF31 32452



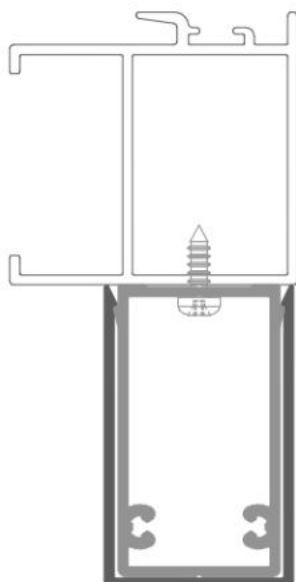
2CF31 31200



20000 62202



20000 62540

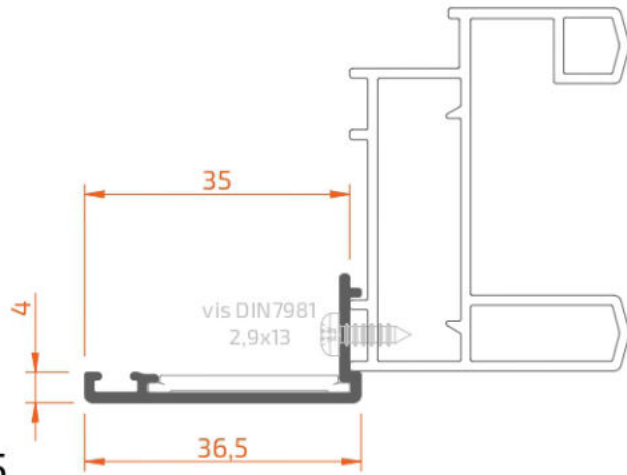


40000 80000
embout profils renfort

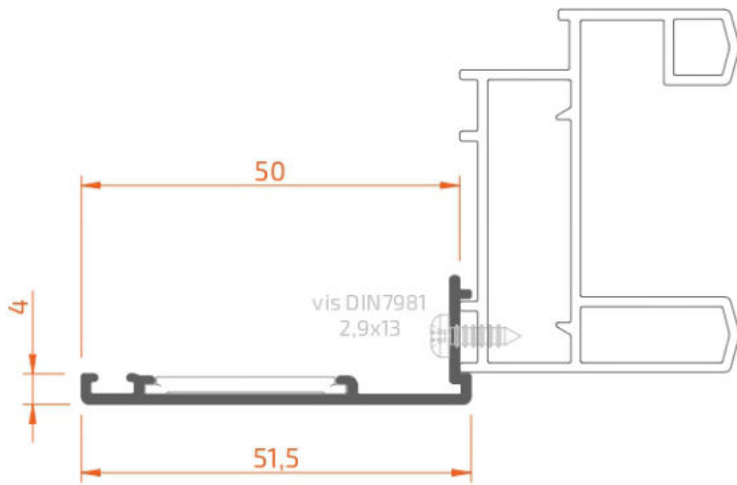
40000 22702
equerre
alignement couvre-joint



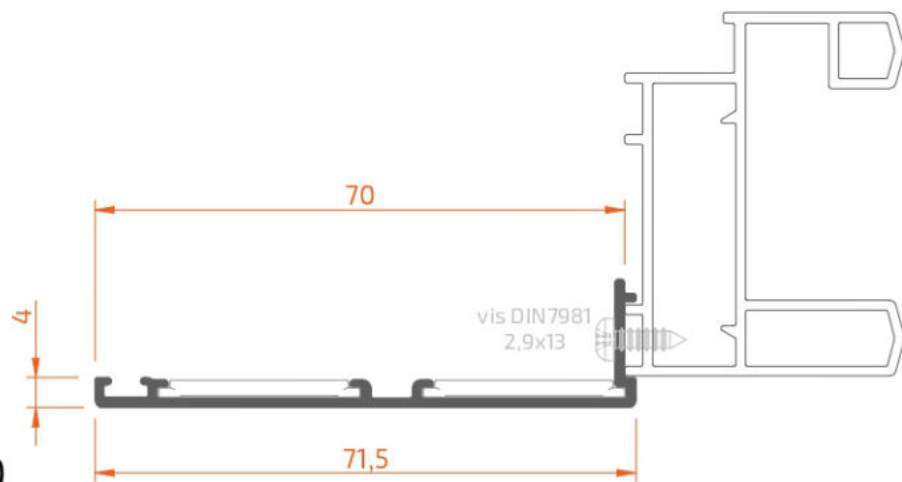
20000 91735

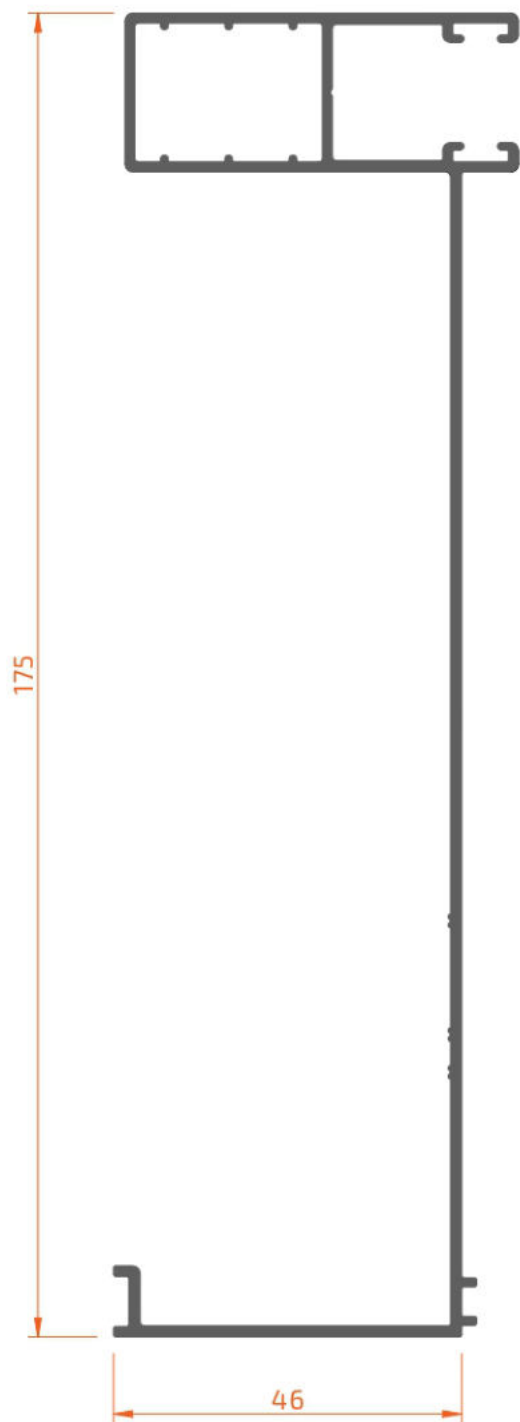


20000 91750



20000 91770

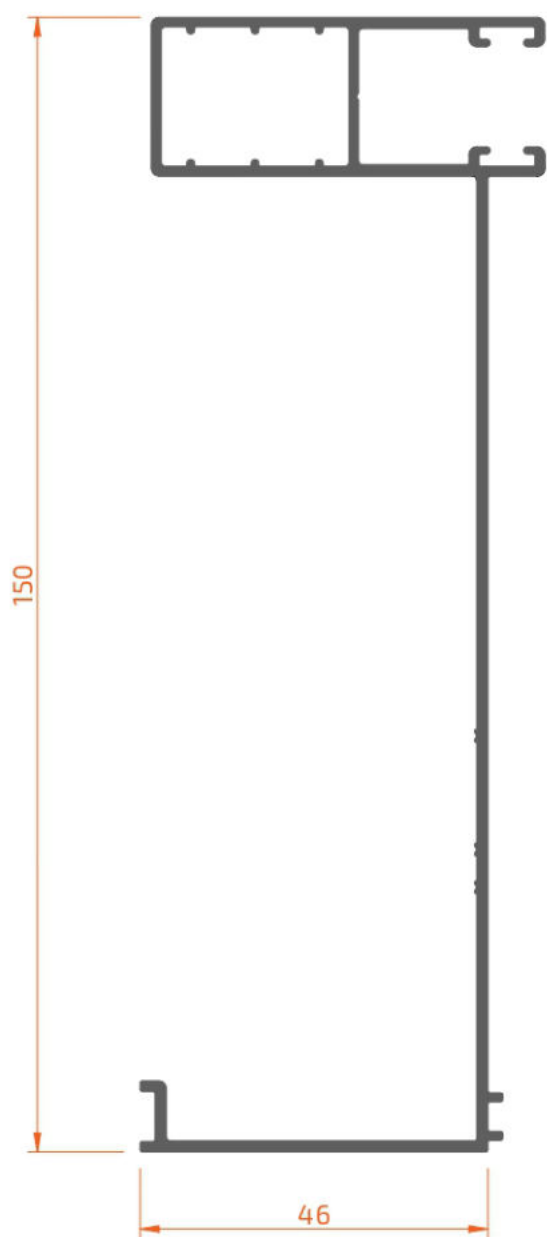




20000 98046



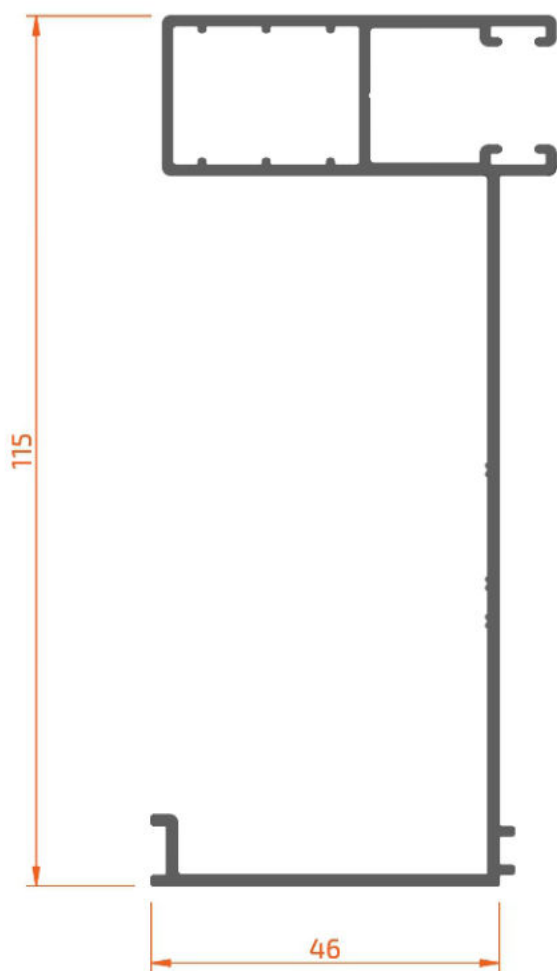
20000 98002



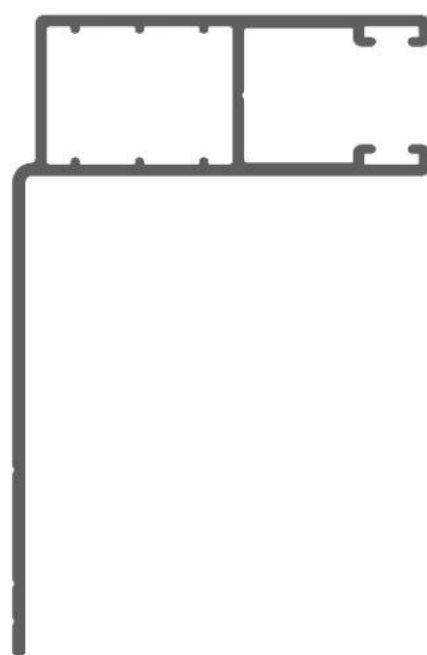
20000 95046



20000 95002

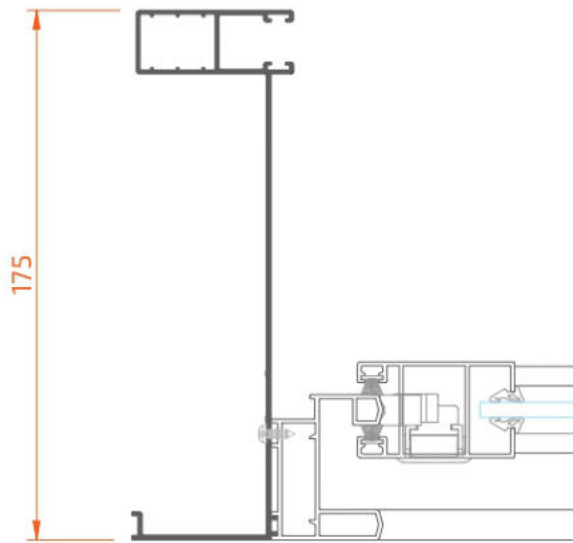


20000 92046

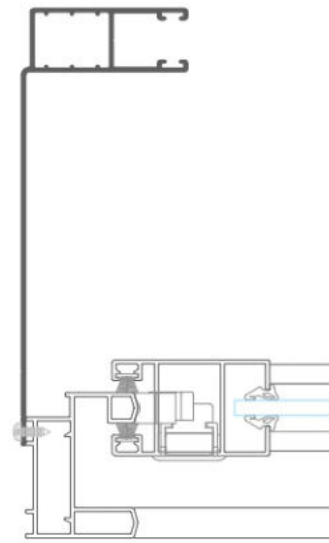


20000 92002

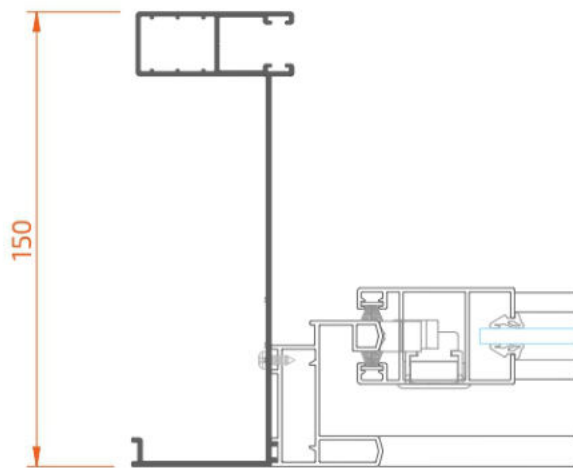
20000 98046



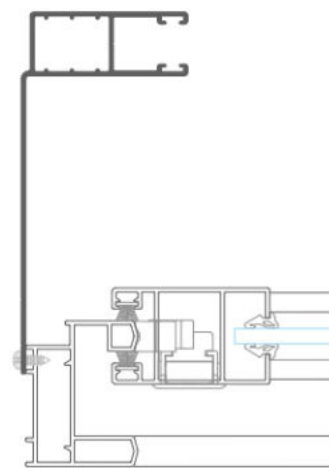
20000 98002



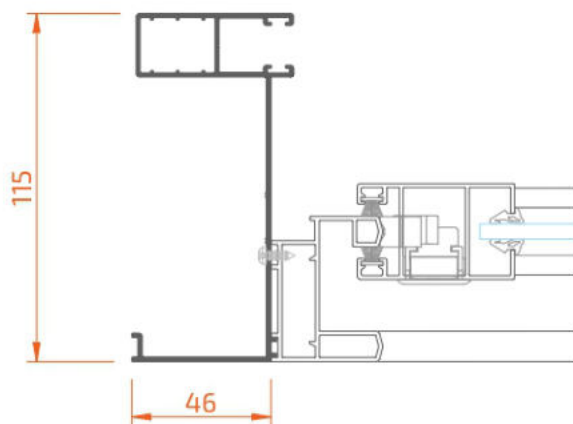
20000 95046



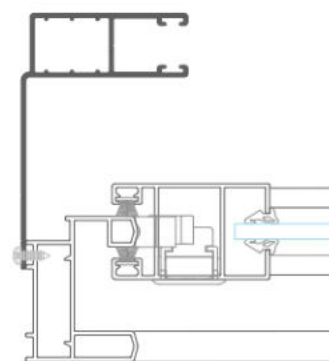
20000 95002



20000 92046

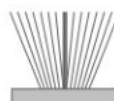


20000 92002

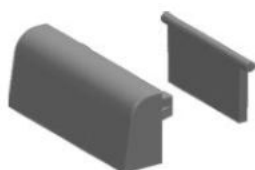




40000 22711
equerre d'assemblage 27x11mm



6CXXX 27070
joint brosse 7x7 HSF
avec lamine central



6XXXX 61010
bouchon rejet d'eau
avec deflecteur



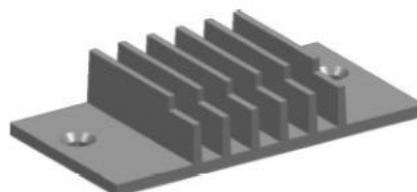
6XXXX 40034
joint de vitrage (3-4mm)



6XXXX 40056
joint de vitrage (5-6mm)



6XXXX 40079
joint de vitrage (7-9mm)



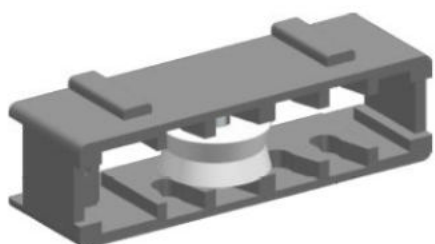
6CF31 60010
pièce d'étanchéité central



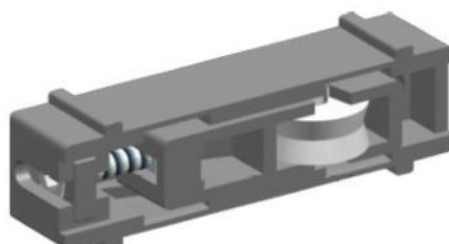
6CF31 61010
pièce d'étanchéité
ouvrant latéral



6CF31 61110
pièce d'étanchéité
ouvrant central



8CF31 61010
roulette simple fixe
60 kg/ouvrant



8CF31 61110
roulette simple réglable
60 kg/ouvrant



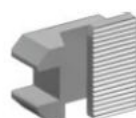
8CF31 62010
fermeture encastrée
(cliptable)



8CF31 62020
poignée en applique - Agueda



8CF31 62110
gache (dormant)




8CF31 62120
crochet (ouvrant-fermeture)

épaisseur minimale du vitrage

recommandée par HPS
et sur la base de la norme EN 12488

vitrage simple



charge / vitesse VENT				surface vitrage (m ²)								
				1,0	1,5	2,0	3,0	4,0	6,0	9,0		
Pa	kg/m ²	km/h	m/s									
500	51,0	102,8	28,6				5	6	8			
750	76,5	125,9	35,0		4		5	6	8	10		
1000	101,9	145,4	40,4			5	6	8	10		-	
1250	127,4	162,5	45,2		5	6	8	10		-	-	

vitrage isolant (double vitrage)



charge / vitesse VENT				surface vitrage (m ²)								
				1,0	1,5	2,0	3,0	4,0	6,0	9,0		
Pa	kg/m ²	km/h	m/s									
500	51,0	102,8	28,6					4/5	6/6			
750	76,5	125,9	35,0		4/4		4/5	6/6	6/8			
1000	101,9	145,4	40,4			4/5	6/6	6/8		-		
1250	127,4	162,5	45,2		4/5	6/6	6/8		-	-		

	JOINT EXTÉRIEUR	VITRAGE	JOINT INTÉRIEUR
6XXXX	40034	6	40034
	40034	5	40034
	40034	4	40034

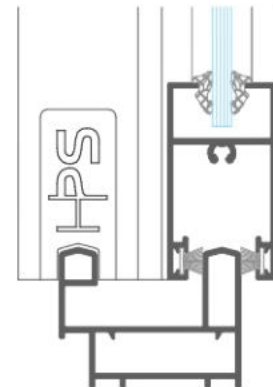
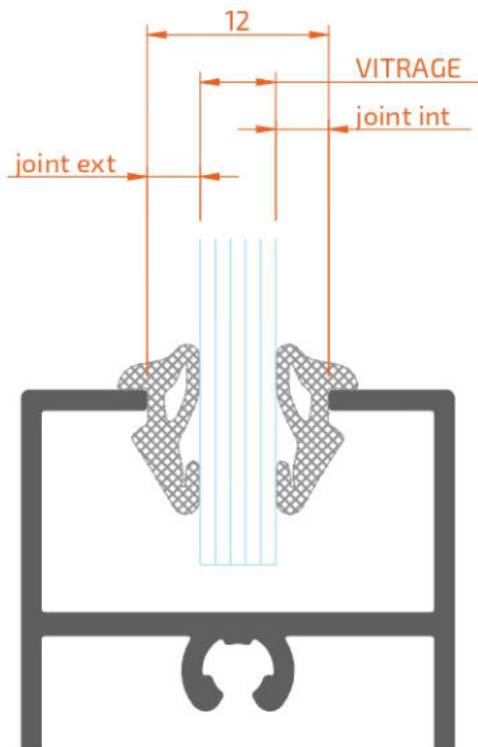


6XXXX 40034
joint de vitrage (3-4mm)




6XXXX 40056
joint de vitrage (5-6mm)


voir page 3.01 avec des profils prise de volume étendu




Vitrage - Prise de volume: 24 mm

	JOINT EXTÉRIEUR	VITRAGE	JOINT INTÉRIEUR
6XXXX	40034	18	40034
	40034	16	40034
	40034	14	40056
	40056	12	40056
	40056	10	40079
	40079	8	40079
	40079	6	40079

 6XXXX 40034
joint de vitrage (3-4mm)

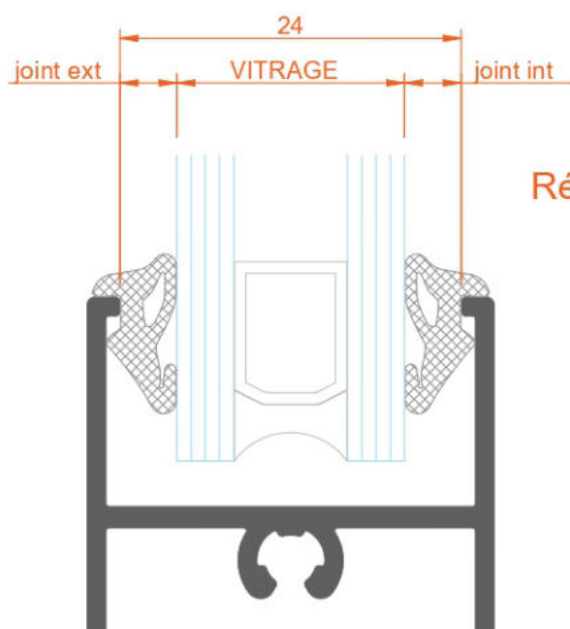
 6XXXX 40056
joint de vitrage (5-6mm)

 6XXXX 40079
joint de vitrage (7-9mm)

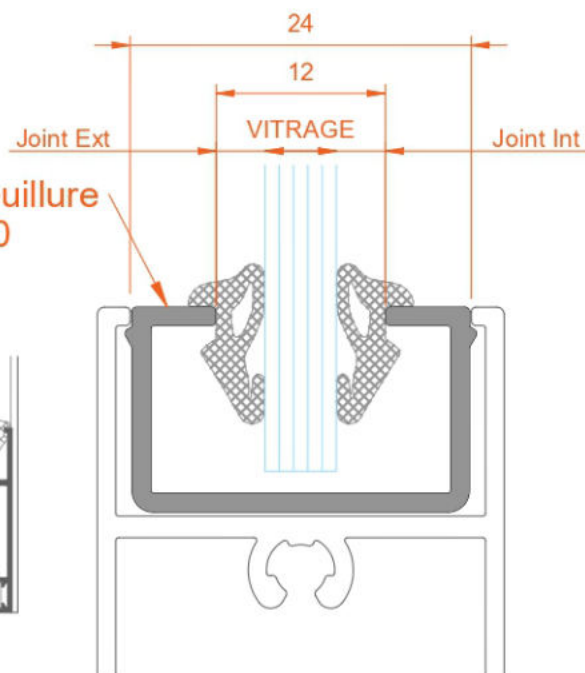
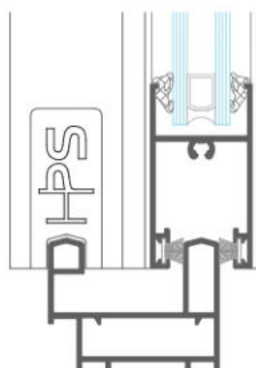
Avec Réducteur de Feuillure

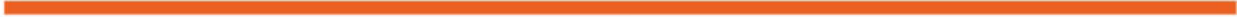
6XXXX	40034	6	6XXXX	40034
	40034	5		40034
	40034	4		40034

 6XXXX 40034
joint de vitrage (3-4mm)



Réducteur de Feuillure
2CF31 31200





4.02 - 4.03

Fenêtre our porte-fenêtre a deux ouvrants avec profils vitrage simple

4.04 - 4.05

Fenêtre our porte-fenêtre a deux ouvrants avec profils double vitrage

4.06

Couvre-joint pour fenêtre (quatre côtés)

4.07

Couvre-joint pour porte-fenêtre (trois côtés)

4.08

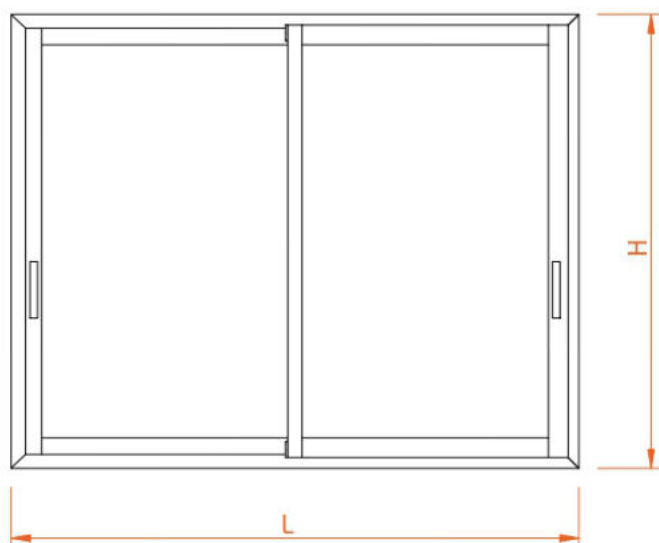
Glissières et couvre-joint pour fenêtre avec caisson monobloc (quatre côtés)

4.09

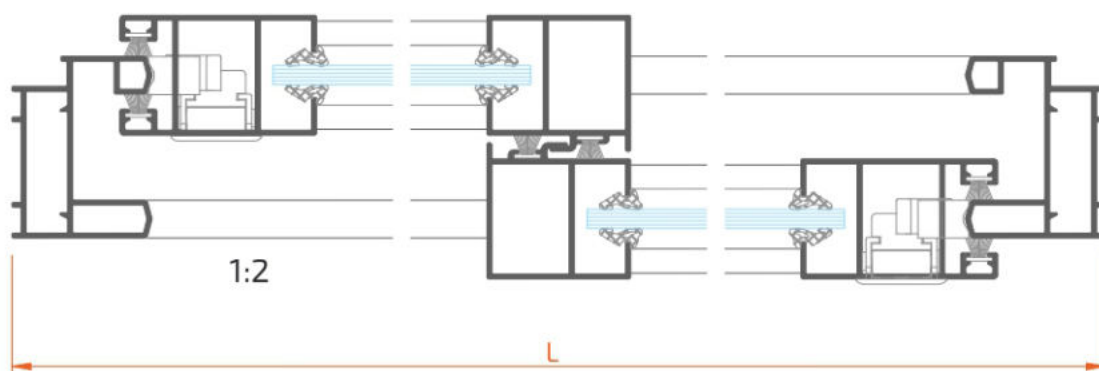
Glissières et couvre-joint pour porte-fenêtre avec caisson monobloc (trois côtés)














4.09

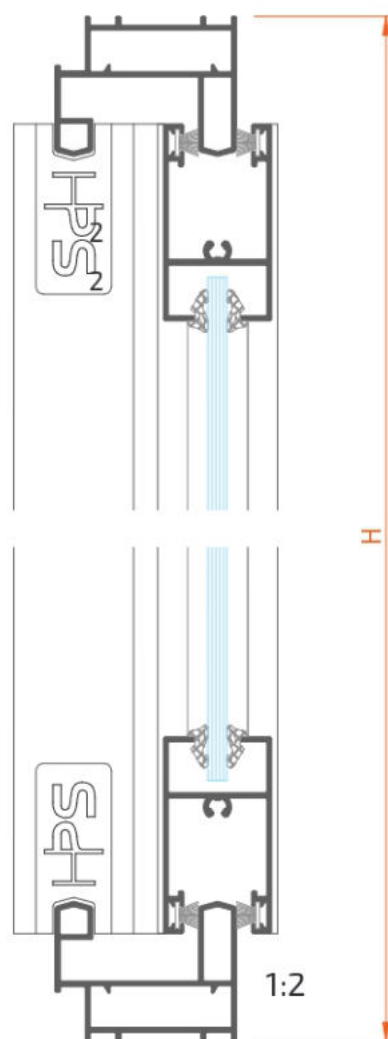
Profils de renforcement vertical ouvrants

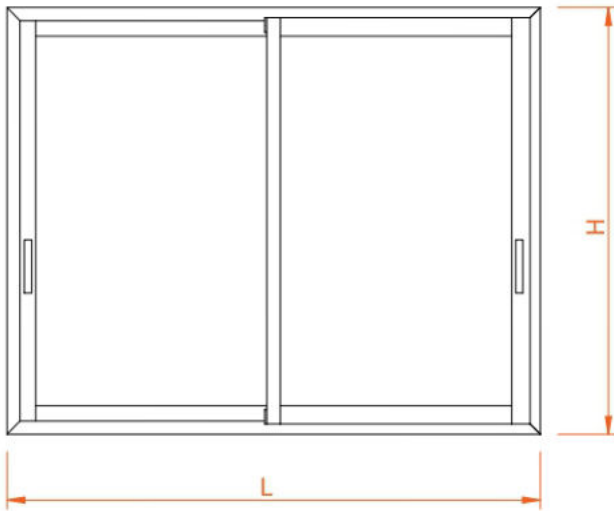


Profil	Dessin	Coupe	Quantité	Formule
2CF31 14037			2	L
			2	H
2CF31 31252			4	(L-53) / 2
2CF31 31231			2	H-58
2CF31 31236			2	H-58
vitrage (2)			(L-153)/2 x H-138	

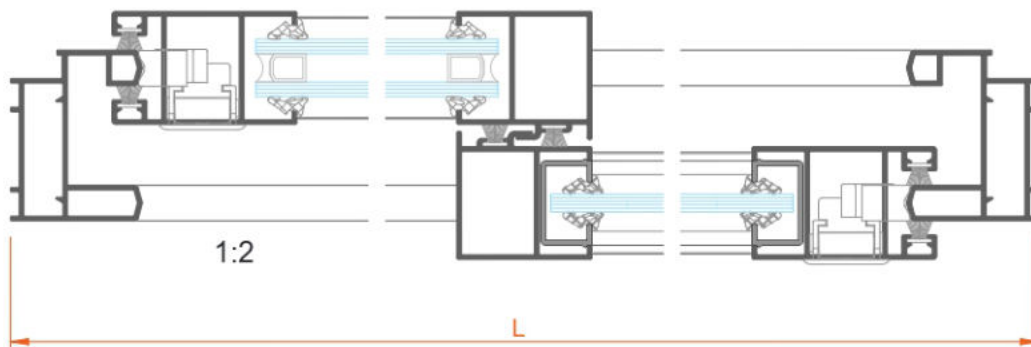















Accessoire	Dessin	Description	Quantité
40000 22711		équerre dormant	4
		vis assemblage ouvrant DIN7981 4,8 x 25	8
6CXXX 27070		joint brosse	4L + 6H
6XXXX 61010		bouchon rejet d'eau	1-3
voir 3.02		joint de vitrage	4L + 8H
6CF31 60010		pièce d'étanchéité central	2
6CF31 61010		pièce d'étanchéité ouvrant latéral	4
6CF31 61110		pièce d'étanchéité ouvrant central	4
voir 2.03		roulette	4
8CF31 62010		fermeture encastrée	2
8CF31 62110		gâche (dormant)	2
8CF31 62120		crochet (ouvrant)	2
8CF31 62020		poignée	optionnel

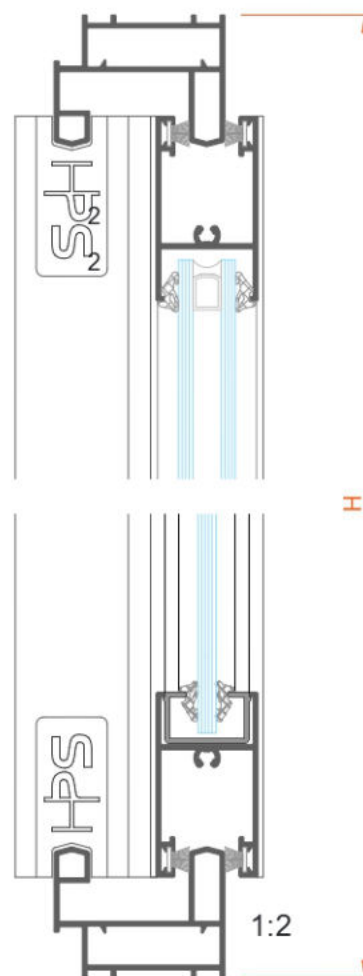


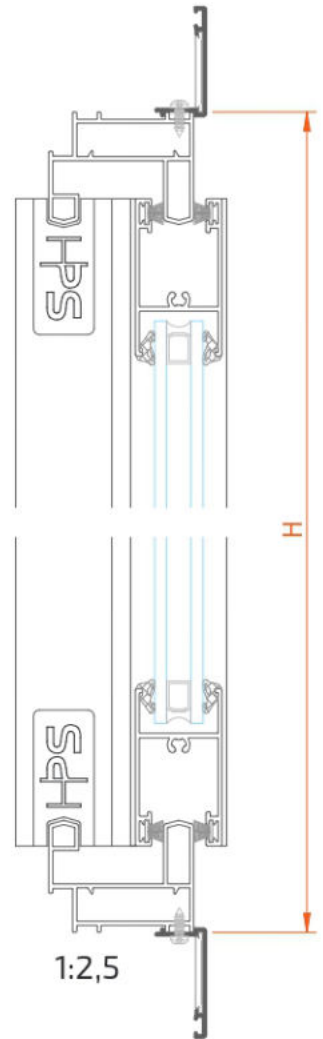
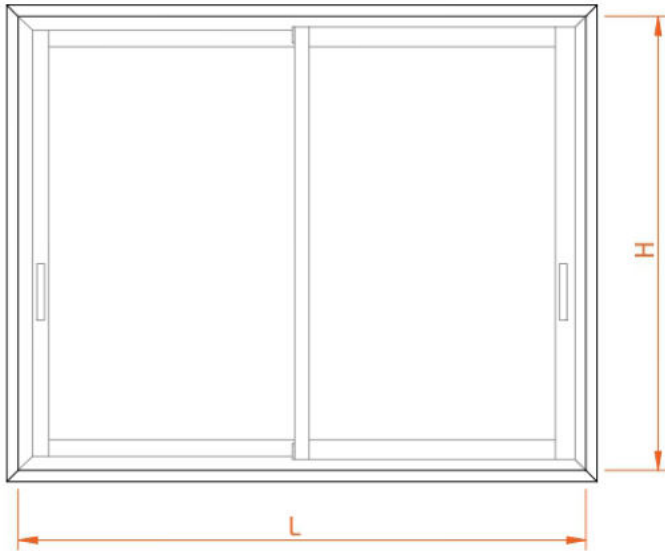


Profil	Dessin	Coupe	Quantité	Formule
2CF31 14037			2	L
			2	H
2CF31 32452			4	$(L-53) / 2$
2CF31 32431			2	H-58
2CF31 32436			2	H-58
vitrage (2)				$(L-153)/2 \times H-138$

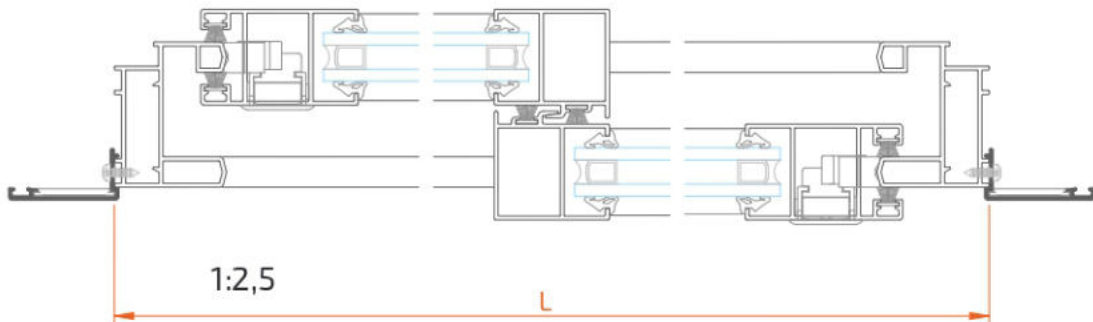


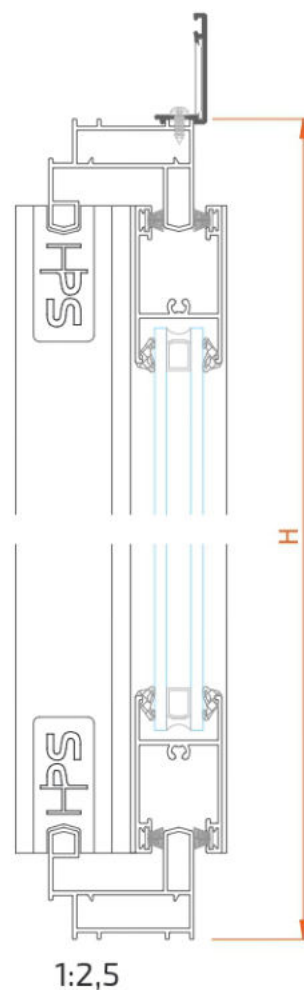
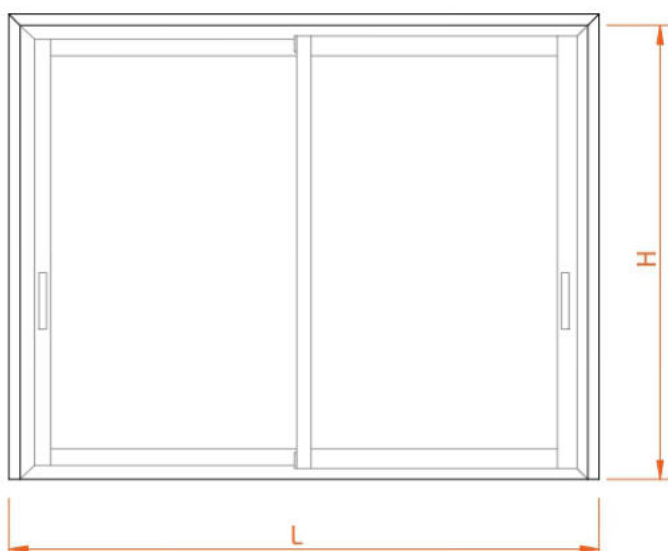
Accessoire	Dessin	Description	Quantité
40000 22711		équerre dormant	4
		vis assemblage ouvrant <i>DIN7981 4,8 x 25</i>	8
6CXXX 27070		joint brosse	4L + 6H
6XXXX 61010		bouchon rejet d'eau	1-3
<i>voir 3.03</i>		joint de vitrage	4L + 8H
6CF31 60010		pièce d'étanchéité central	2
6CF31 61010		pièce d'étanchéité ouvrant latéral	4
6CF31 61110		pièce d'étanchéité ouvrant central	4
<i>voir 2.03</i>		roulette	4
8CF31 62010		fermeture encastrée	2
8CF31 62110		gâche (dormant)	2
8CF31 62120		crochet (ouvrant)	2
8CF31 62020		poignée	<i>optionnel</i>





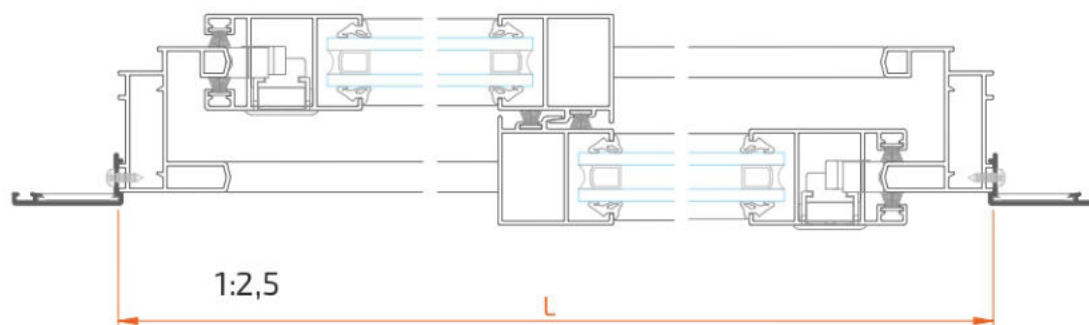
Profil	Dessin	Coupe	Quantité	Formule
20000 91735			2	L + 70
			2	H + 70
20000 91750			2	L + 100
			2	H + 100
20000 91770			2	L + 140
			2	H + 140
20000 91735	équerre alignement 40000 22711		4	
20000 91750			4	
20000 91770			8	
<i>vis fixation couvre-joint - DIN 7981 2,9 x 9,5</i>				

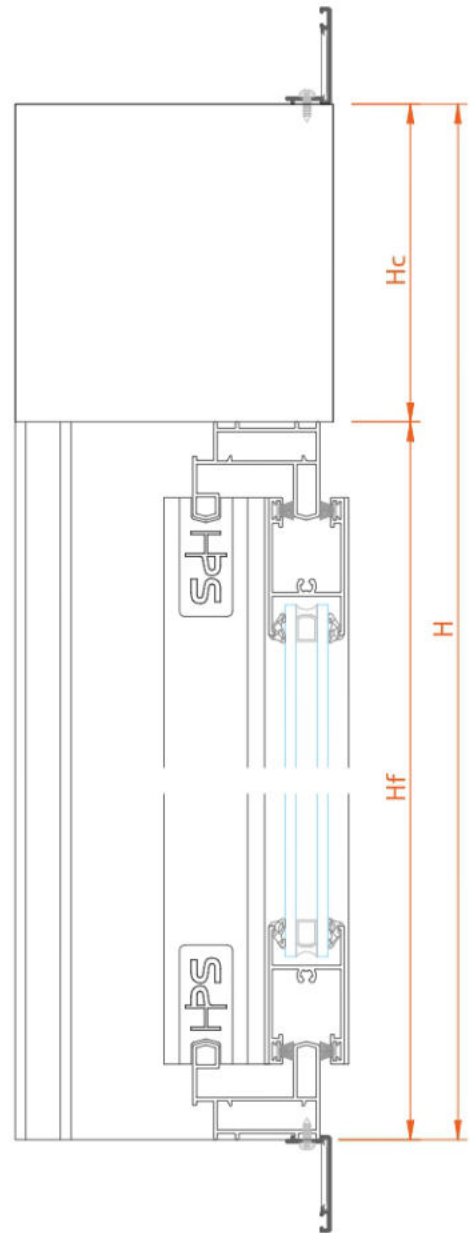
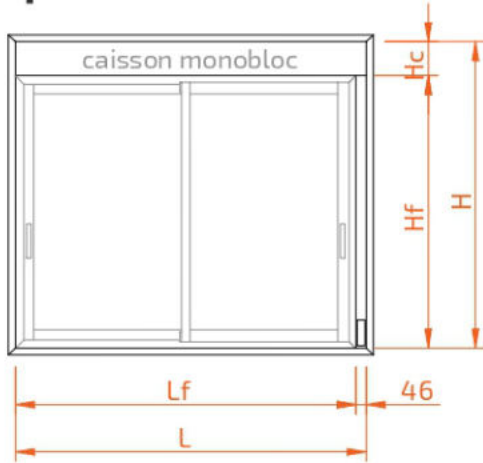




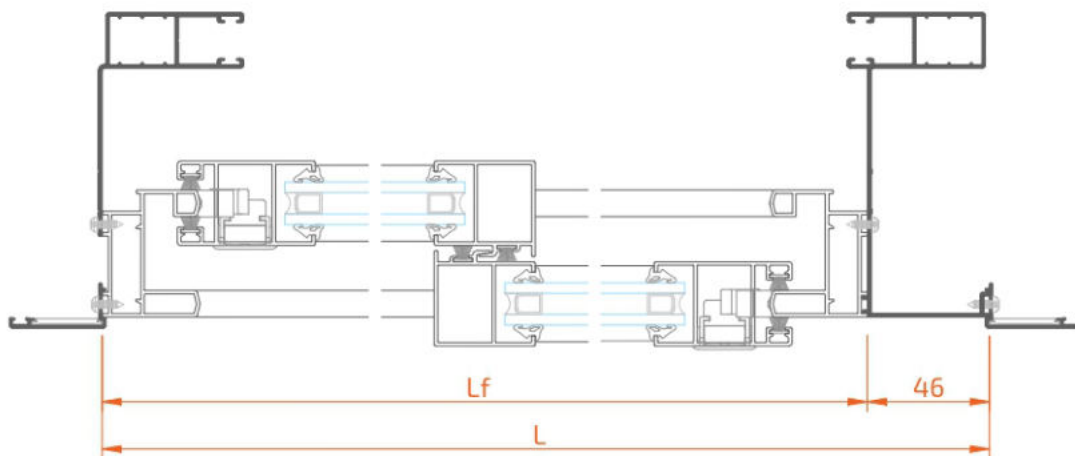
Profil	Dessin	Coupe	Quantité	Formule
20000 91735			1	L + 70
			2	H + 35
20000 91750			1	L + 100
			2	H + 50
20000 91770			1	L + 140
			2	H + 70

20000 91735	équerre alignement 40000 22711	2
20000 91750		2
20000 91770		4
<i>vis fixation couvre-joint - DIN 7981 2,9 x 9,5</i>		

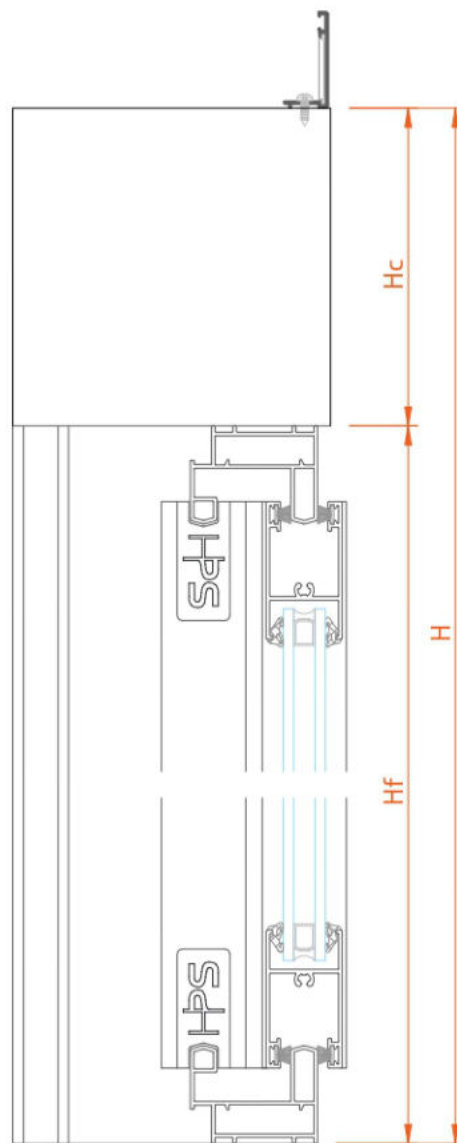
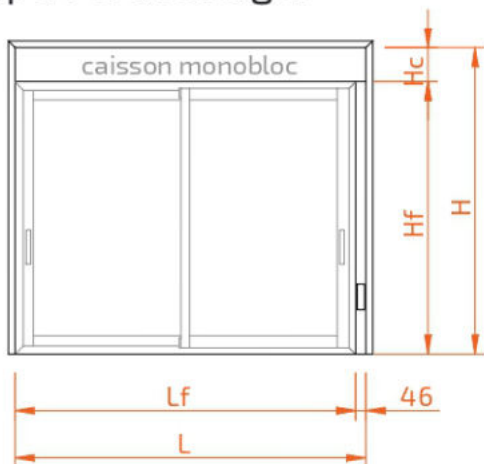




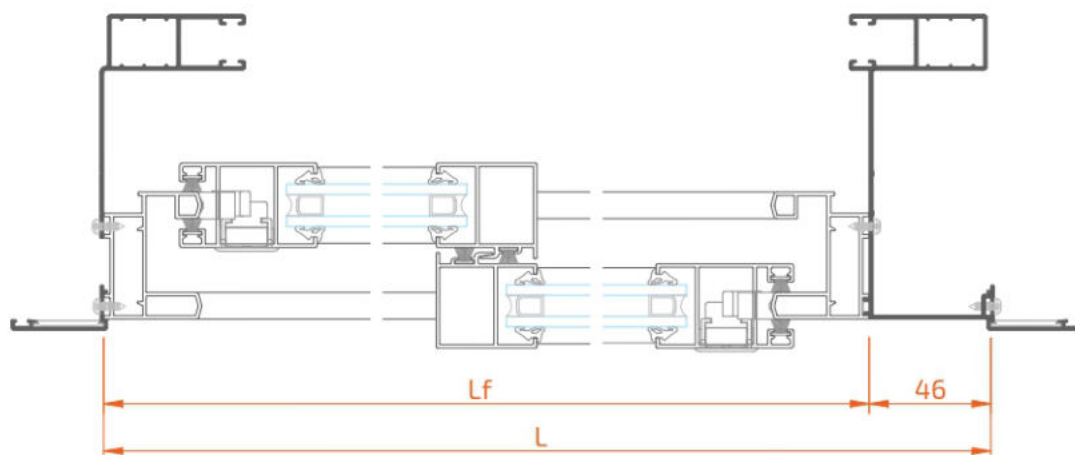
Profil	Dessin	Coupe	Quantité	Formule
20000 91735			2	$Lf + 46 + 70$
			2	$Hf + Hc + 71,5$
20000 91750			2	$Lf + 46 + 100$
			2	$Hf + Hc + 101,5$
20000 91770			2	$Lf + 46 + 140$
			2	$Hf + Hc + 141,5$
20000 98002			1	Hf
20000 95002				
20000 92002				
20000 98046			1	Hf
20000 95046				
20000 92046				
<i>longueur du caisson = L-3,5 (Lf + 42,5)</i>				
20000 91735	équerre alignement 40000 22702			4
20000 91750				4
20000 91770				8
<i>vis fixation couvre-joint / glissière - DIN 7981 2,9 x 9,5</i>				

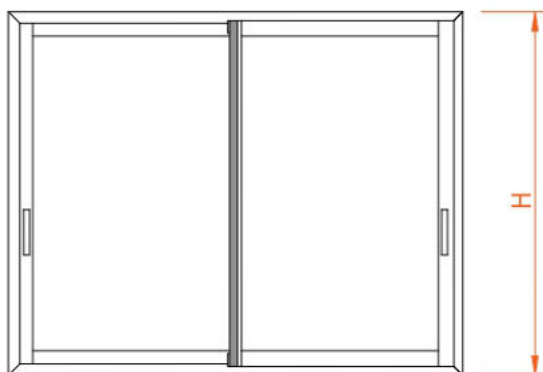


Coupes et débitages



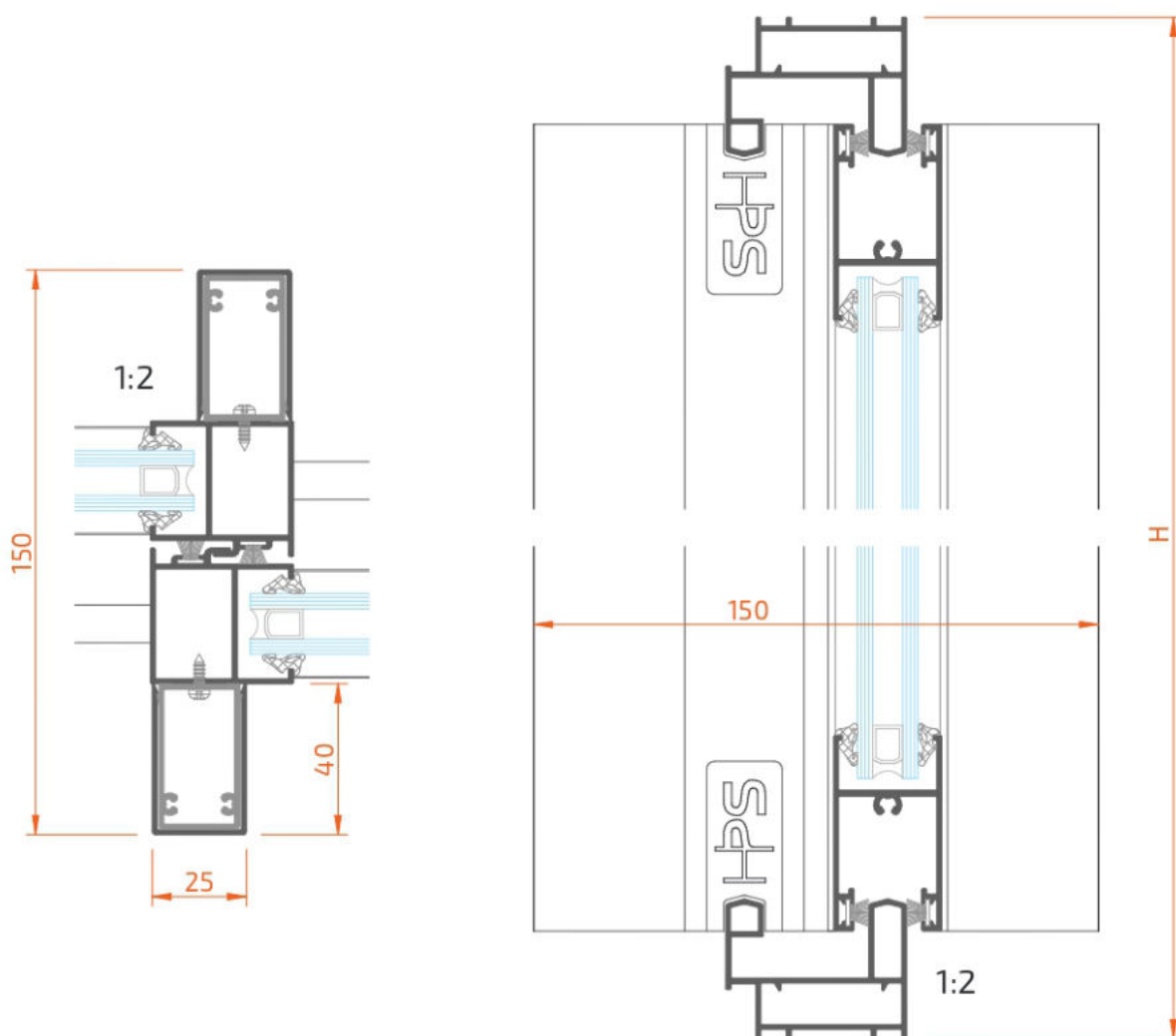
Profil	Dessin	Coupe	Quantité	Formule
20000 91735			1	$L_f + 46 + 70$
			2	$H_f + H_c + 36,5$
20000 91750			1	$L_f + 46 + 100$
			2	$H_f + H_c + 51,5$
20000 91770			1	$L_f + 46 + 140$
			2	$H_f + H_c + 71,5$
20000 98002			1	H_f
20000 95002				
20000 92002				
20000 98046			1	H_f
20000 95046				
20000 92046				
<i>longueur du caisson = $L - 3,5$ ($L_f + 42,5$)</i>				
20000 91735	équerre alignement 40000 22702		2	
20000 91750			2	
20000 91770			4	
vis fixation couvre-joint / glissière - DIN 7981 2,9 x 9,5				



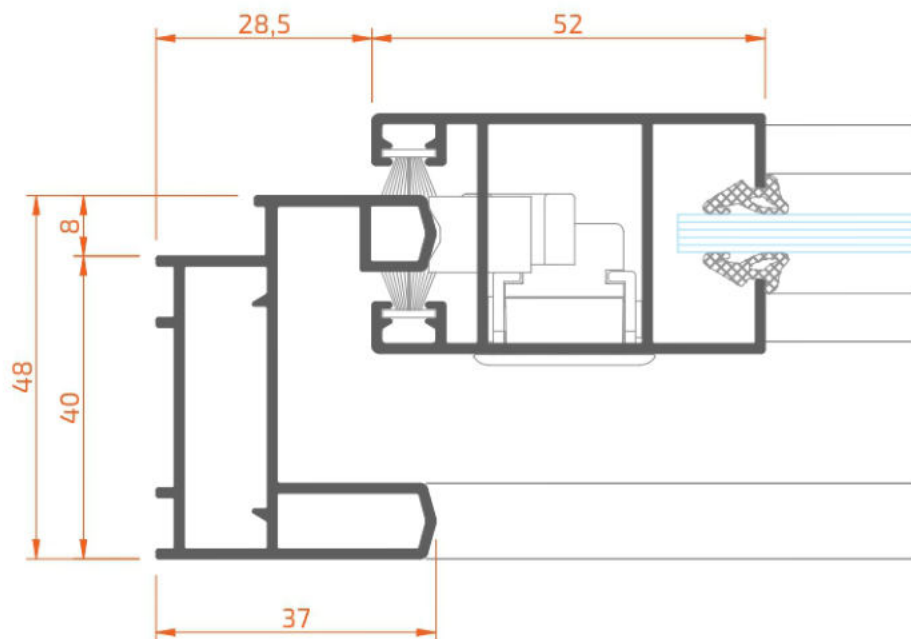


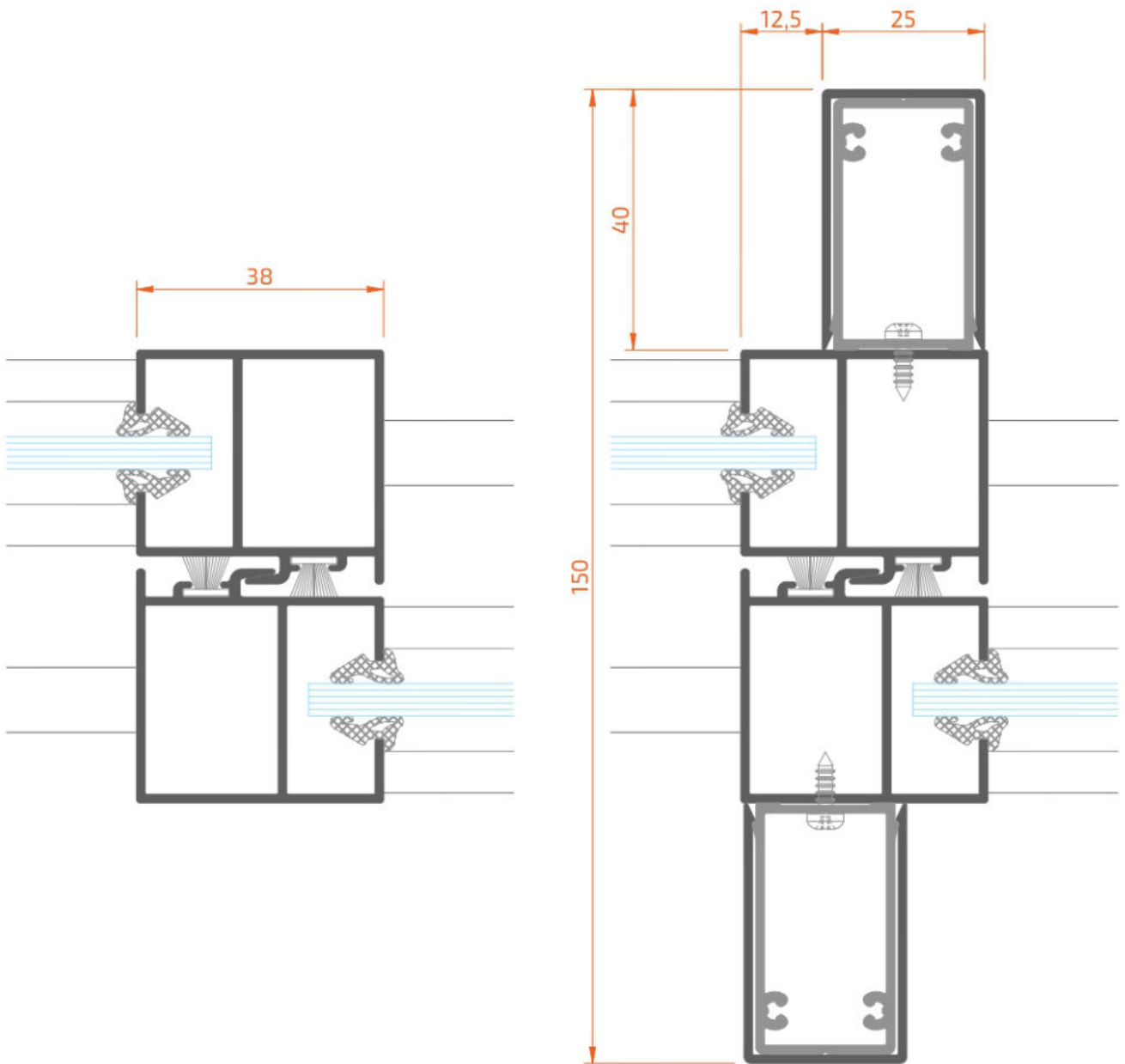
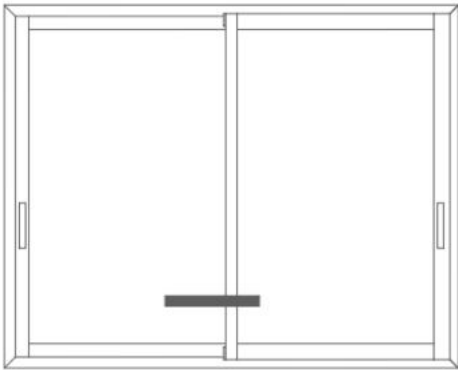
Profil	Dessin	Coupe	Quantité	Formule
20000 62202			2	H-58
20000 62540			2	H-58

vis fixation renfort - DIN7981 2,9x9,5 (chaque 400mm)

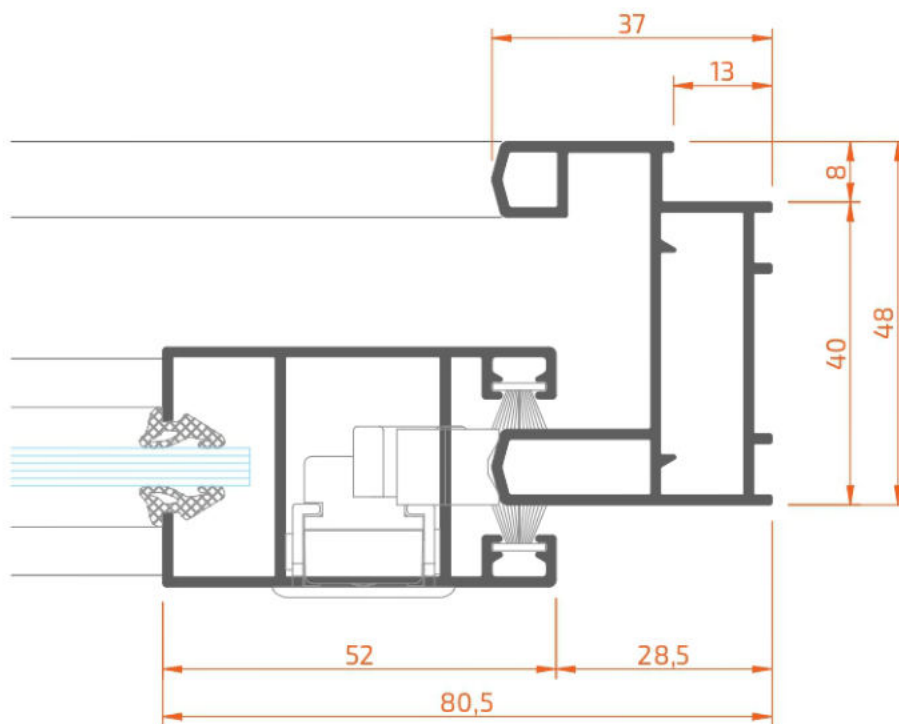
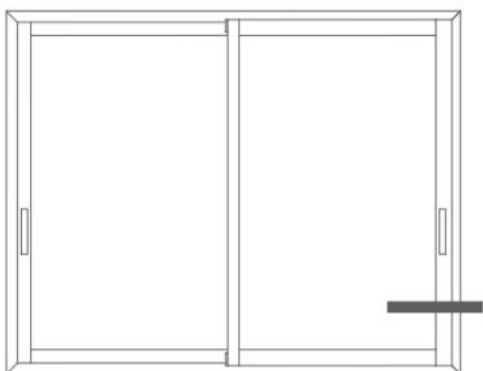


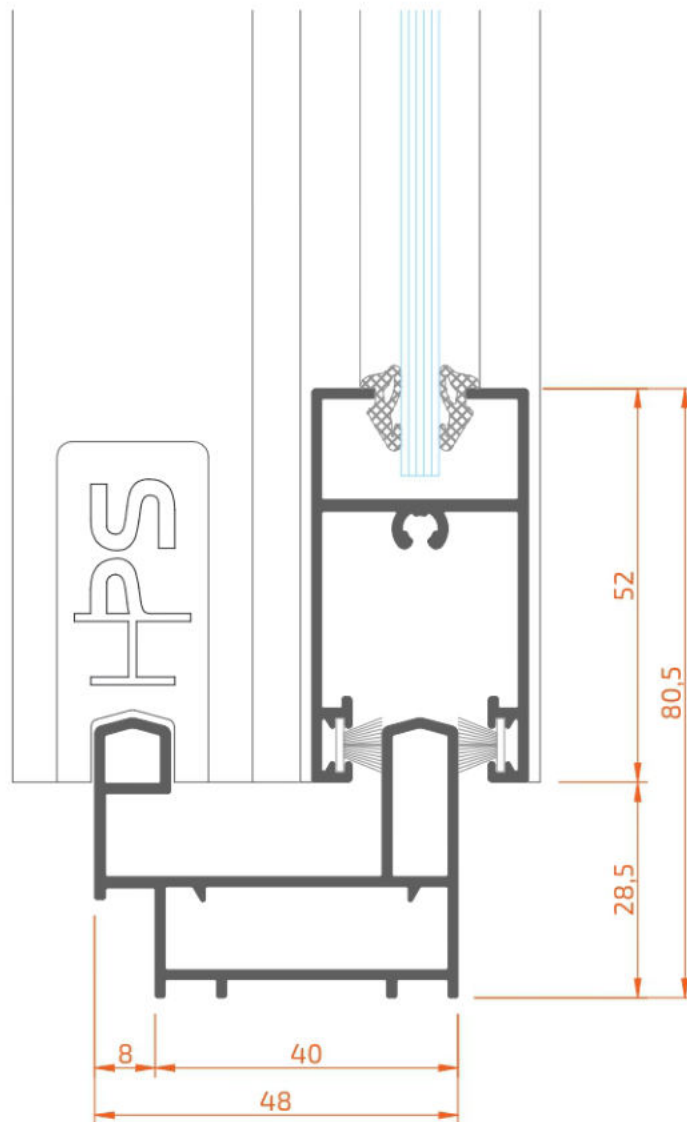
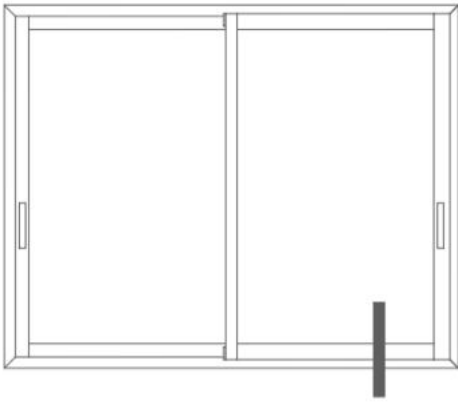
Sections echelle 1:1



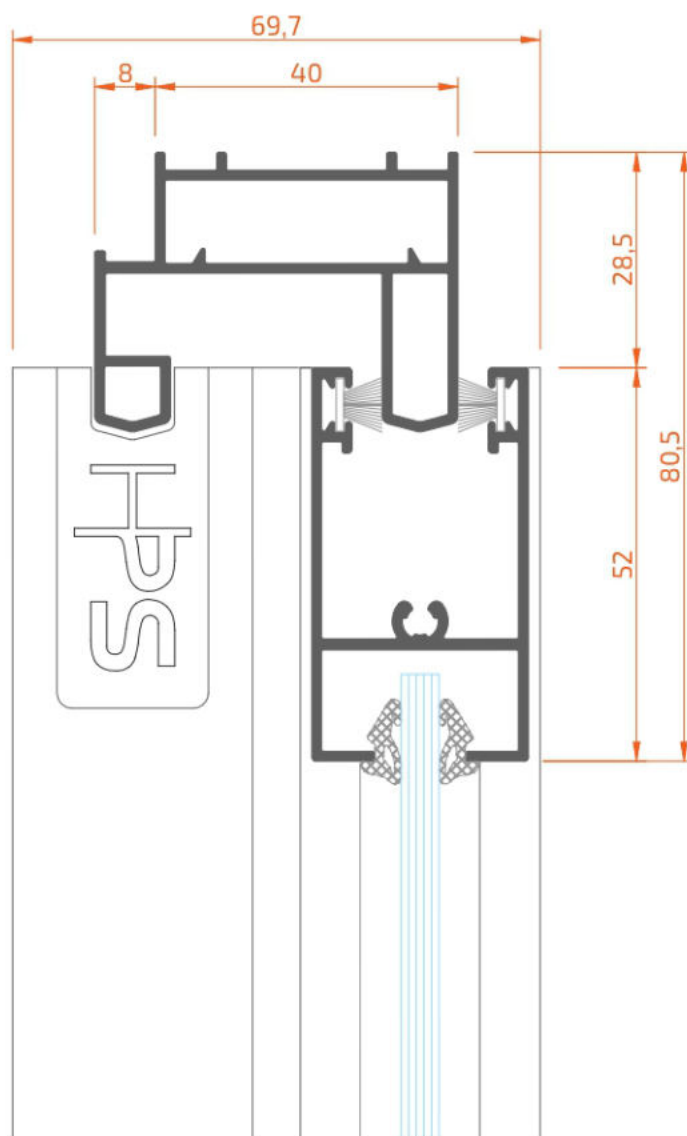
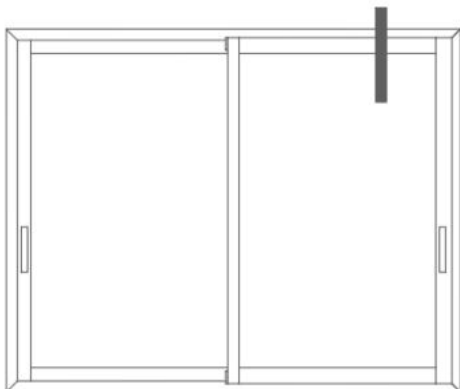


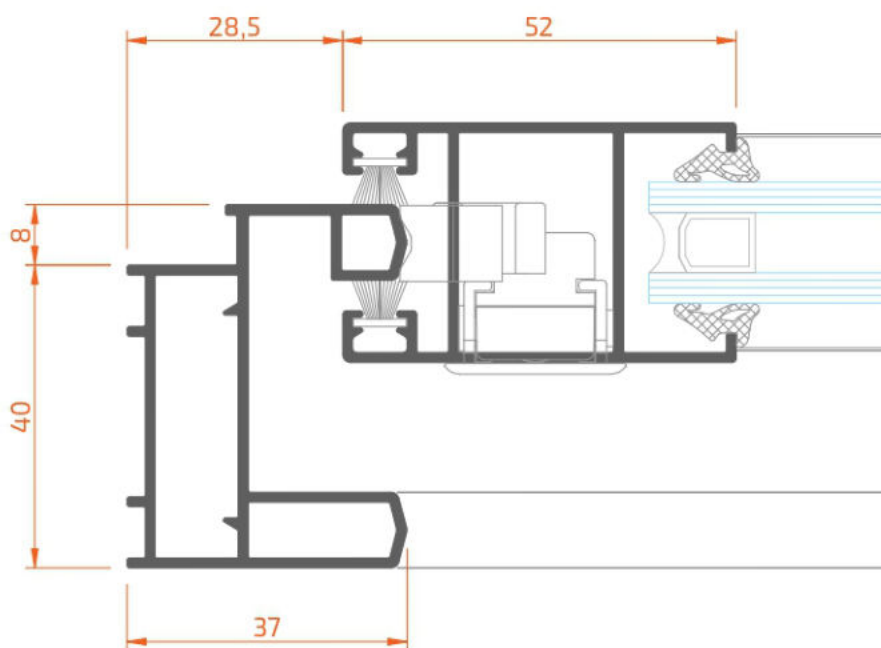
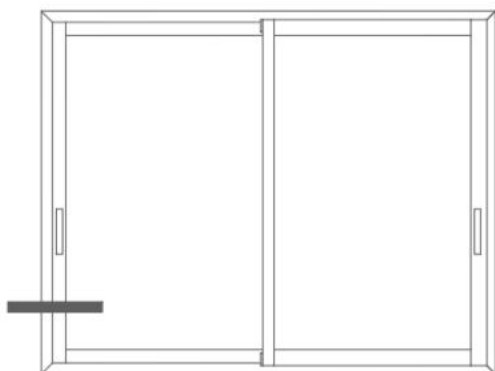
Sections echelle 1:1



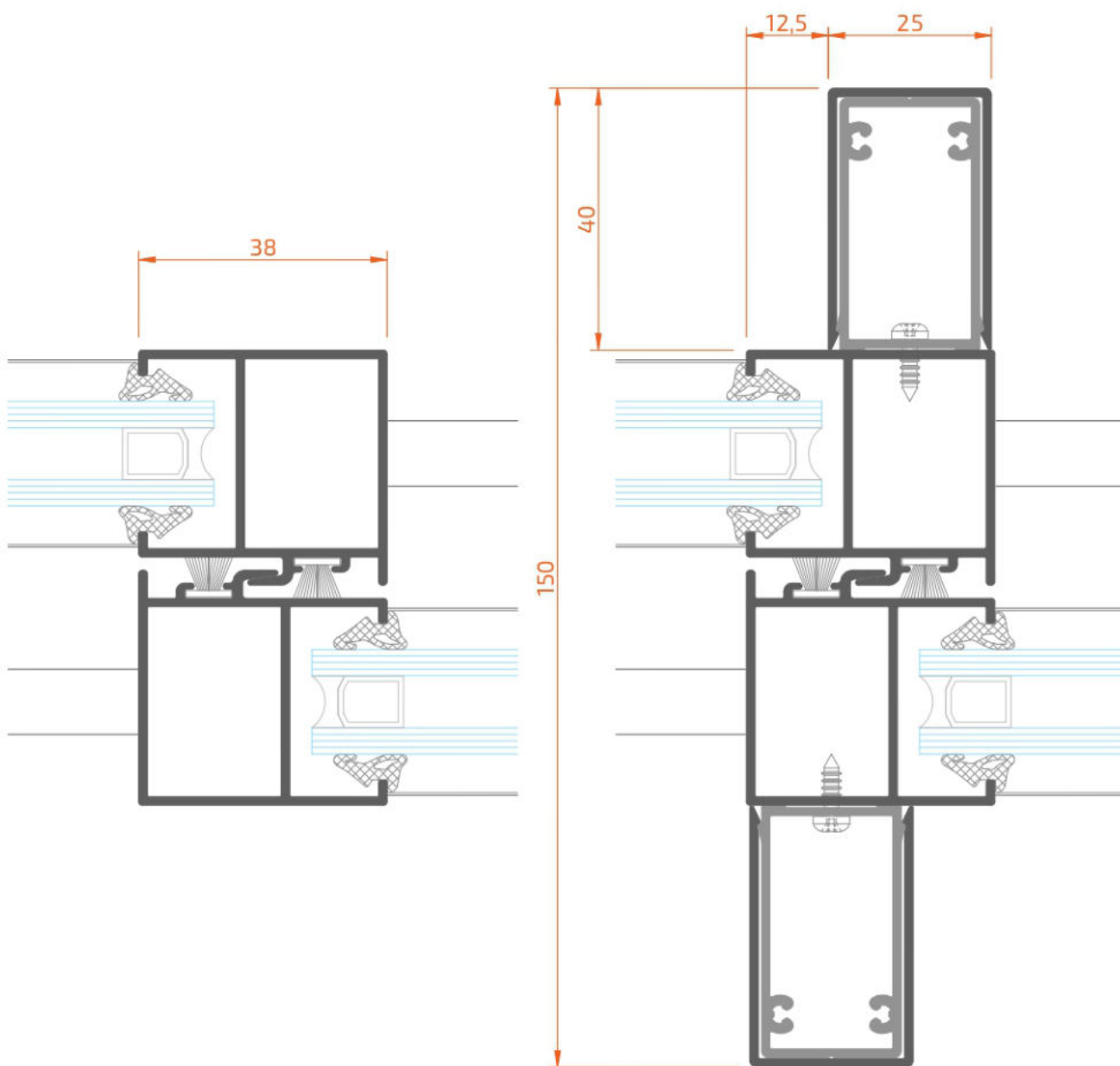
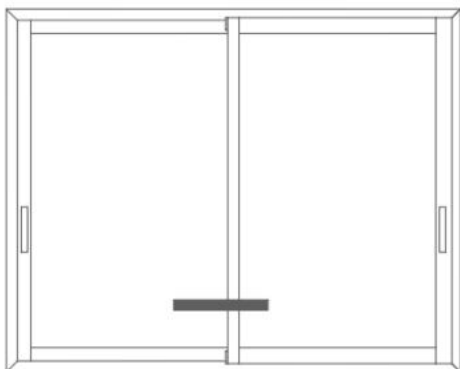


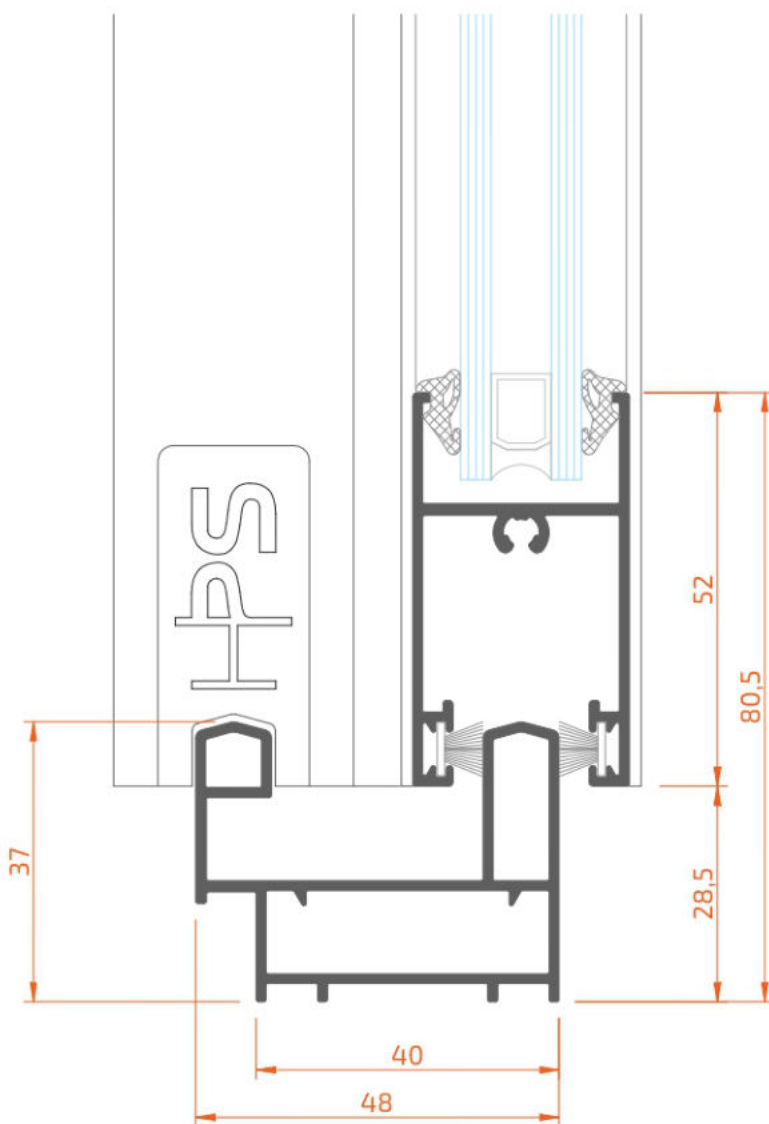
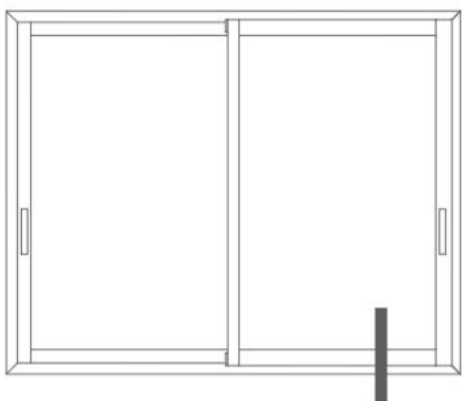
Sections echelle 1:1



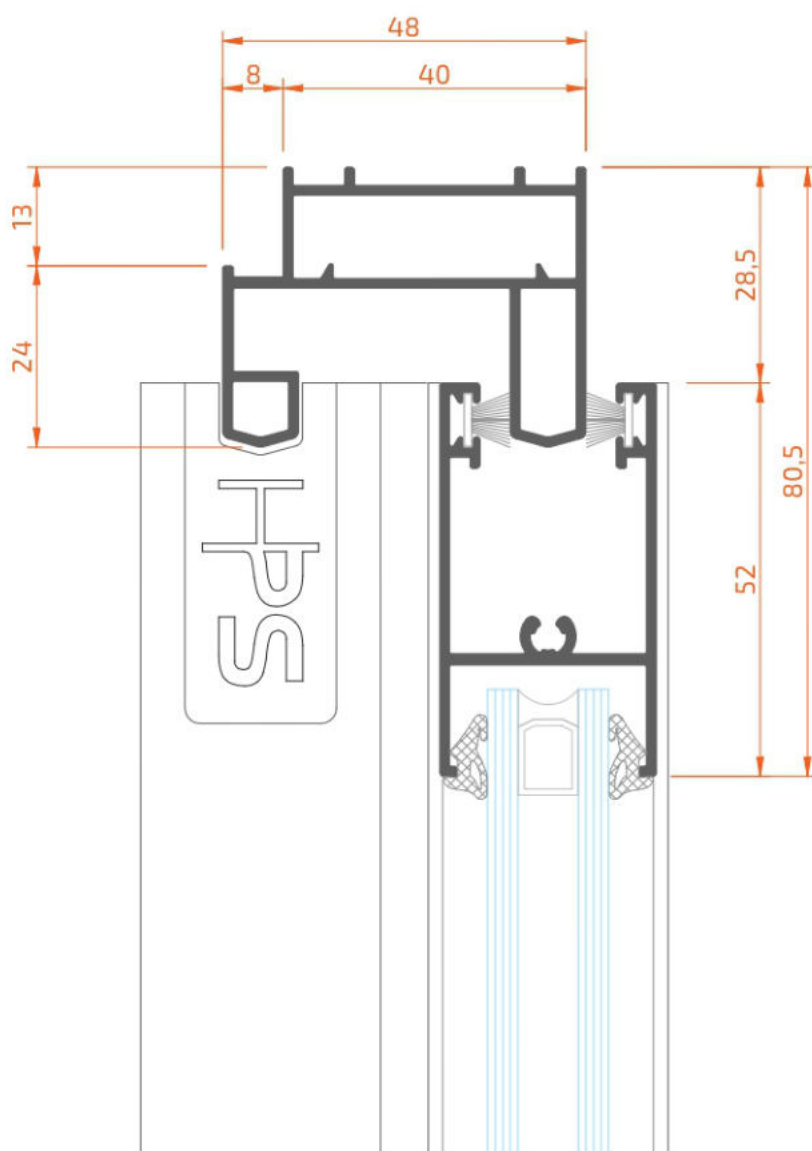
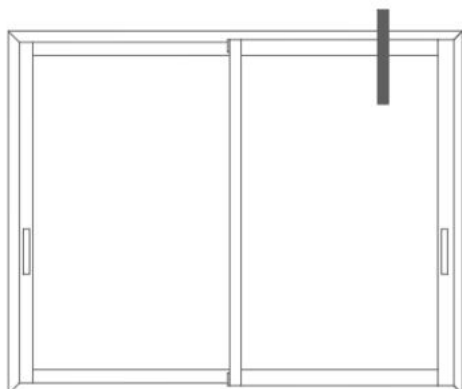


Sections echelle 1:1

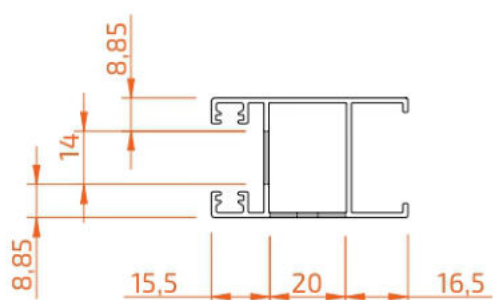
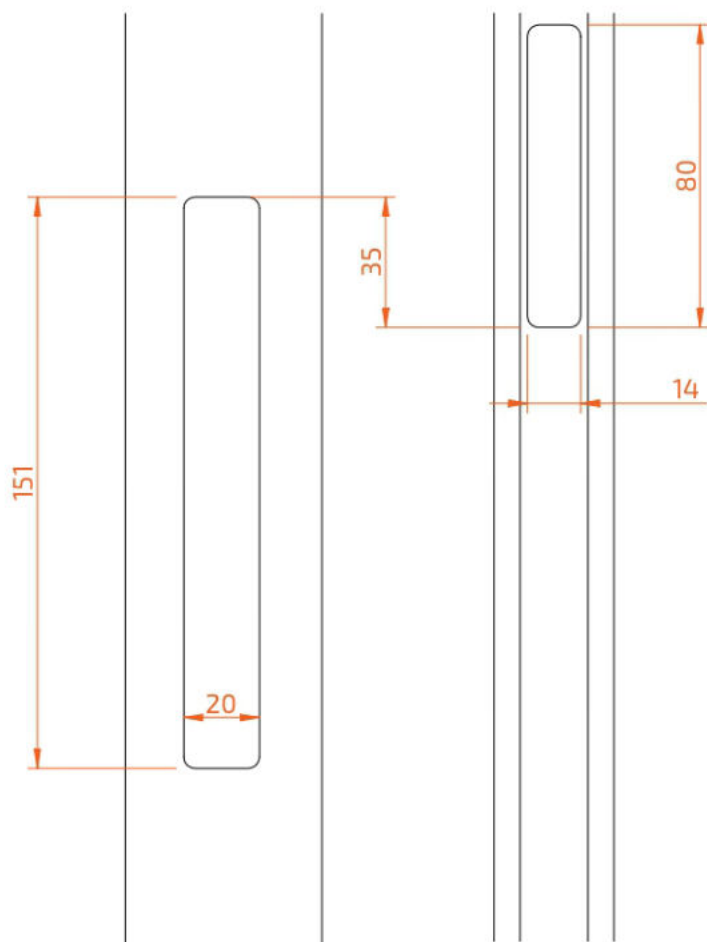


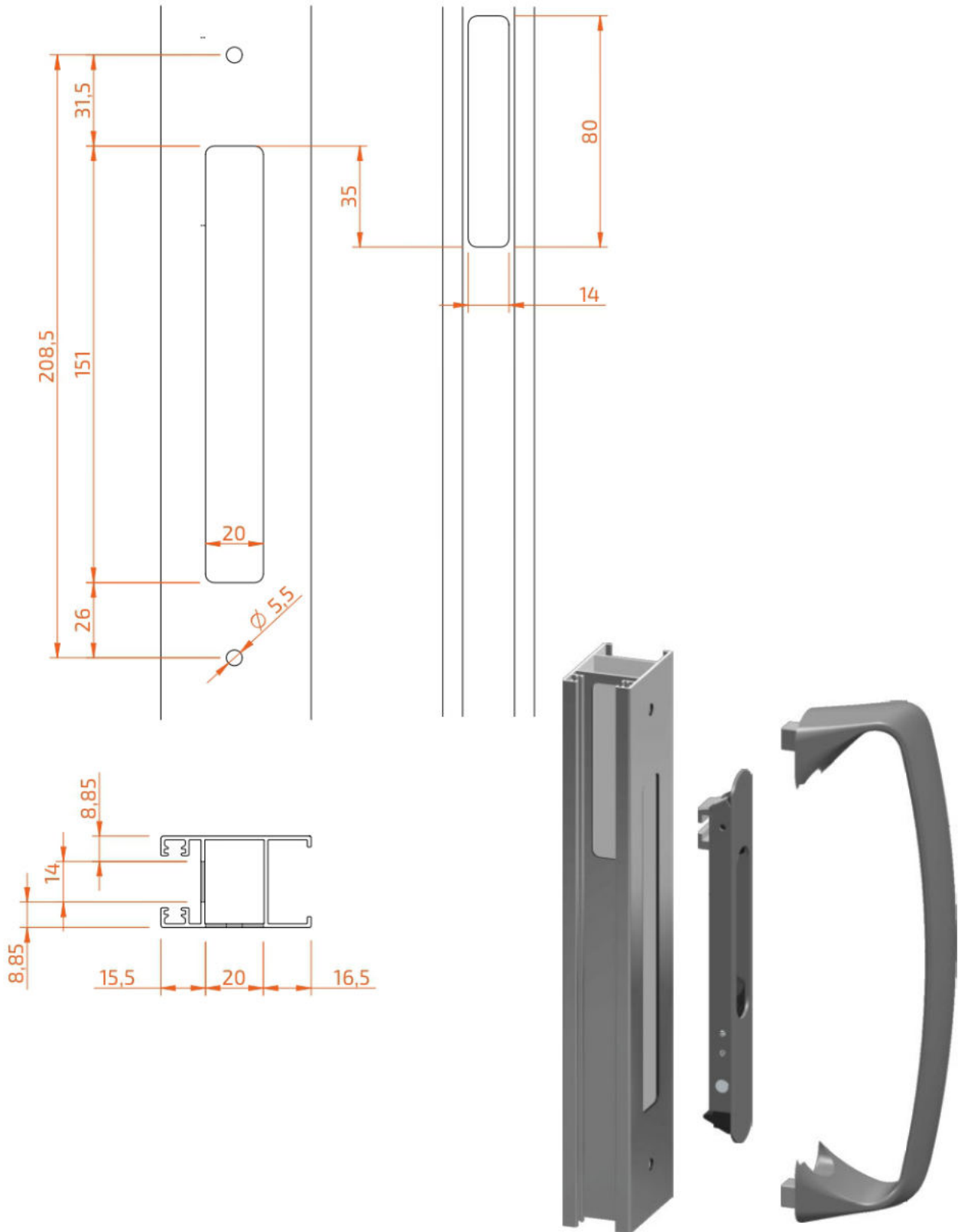


Sections echelle 1:1

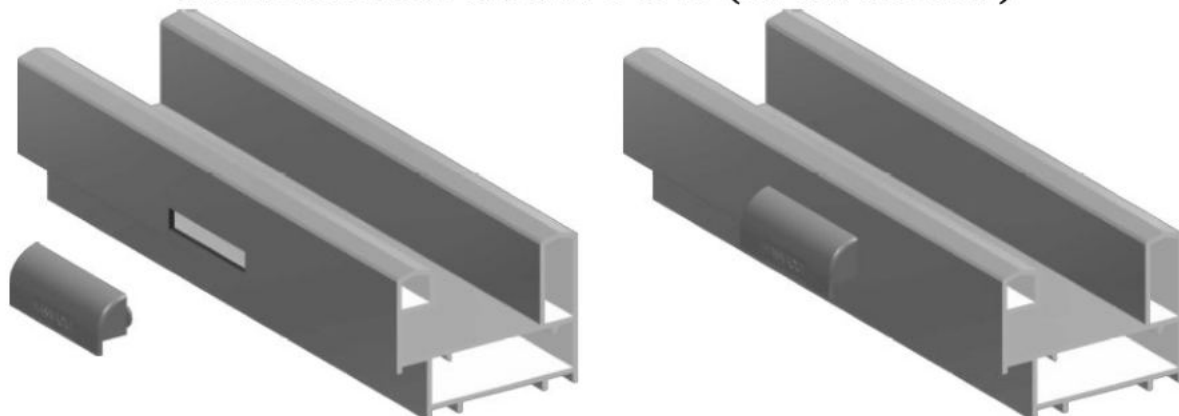




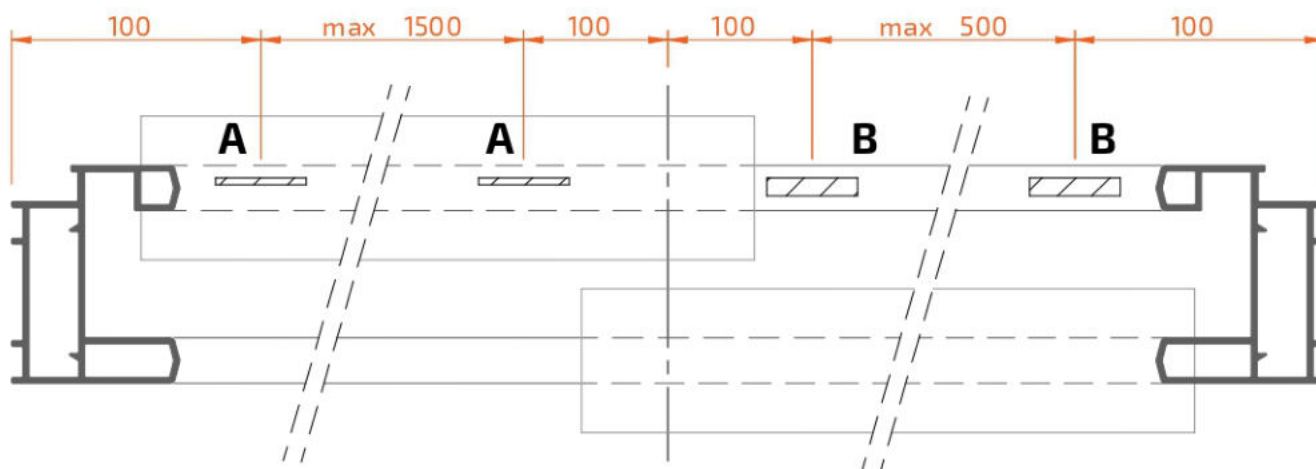
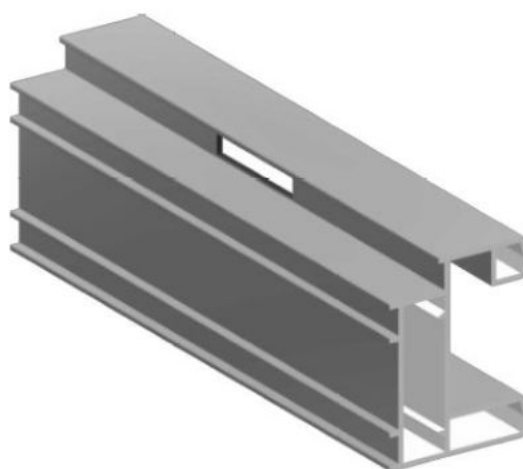




trou de sortie d'eau - type **A**
avec bouchon 6XXXX 61010 (et deflecteur)



trou de sortie d'eau - type **B**





HASNAOUI PROFILE SYSTEMS

B. P. 245, Zone Industrielle Sidi Bel-Abbès 22000, Algérie
Tél : +213 (0) 48 70 66 19 / +213 (0) 48 70 66 20
Fax : +213 (0) 48 70 66 19
E-Mail : info@hps-dz.com

