



CATALOGUE TECHNIQUE

Série Coulissante



HB6



Différents modèles et finitions sont disponibles

Index

Profils 1.01

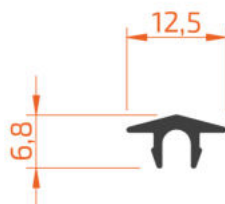
Accessoires 2.01

Vitrages 3.01

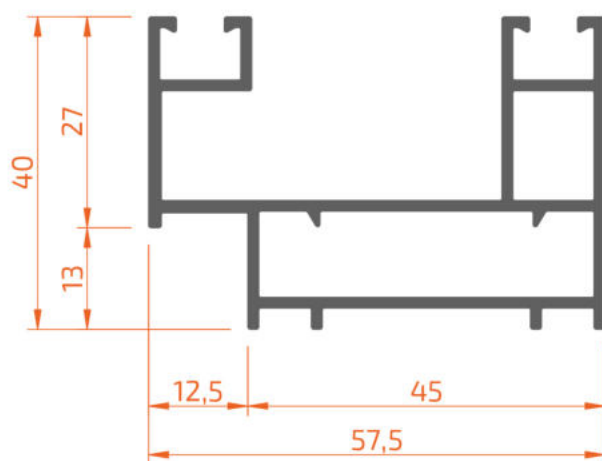
Coupes et débitages 4.01

Sections echelle 1:1 5.01

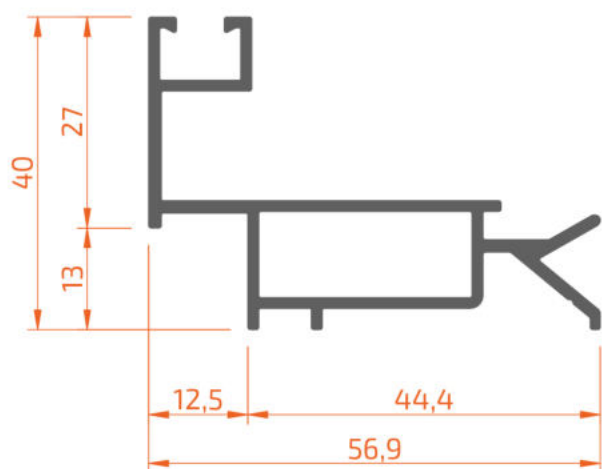
Autres détails 6.01



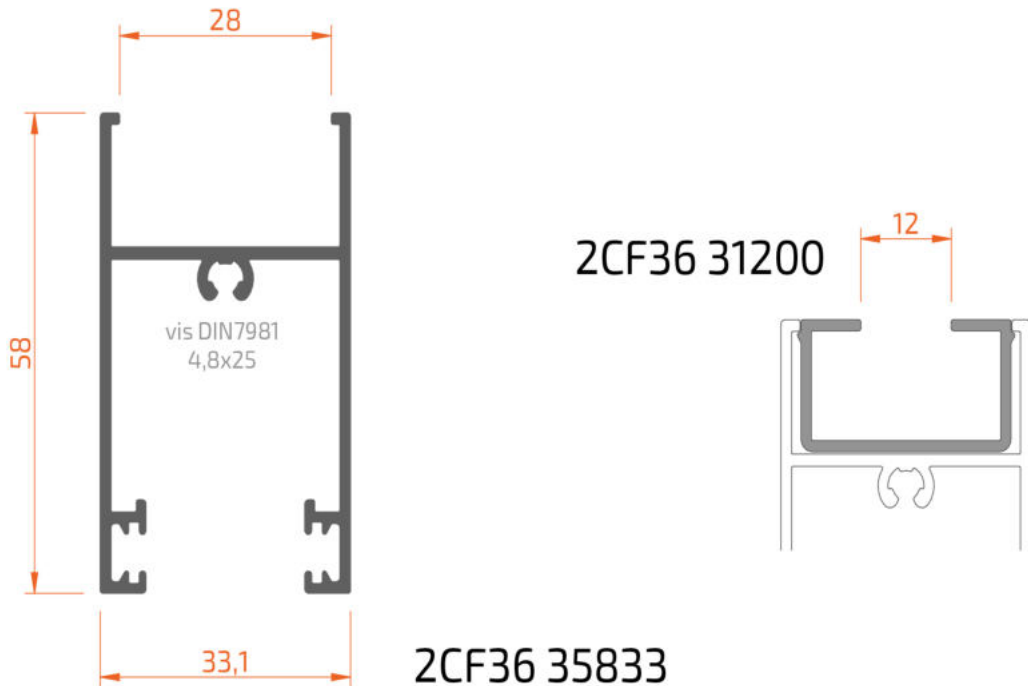
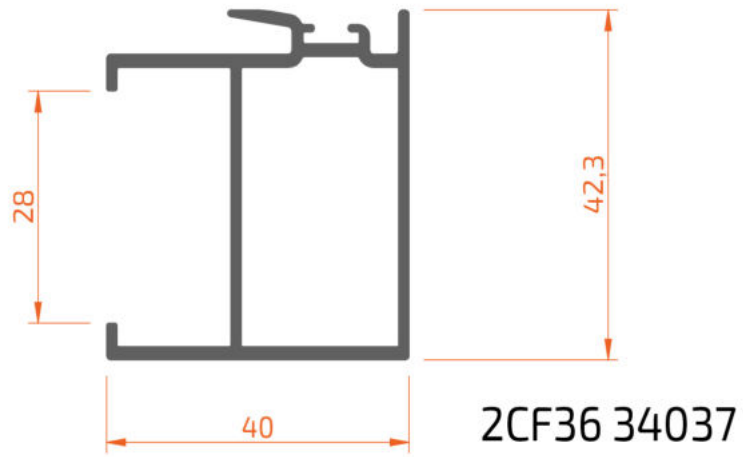
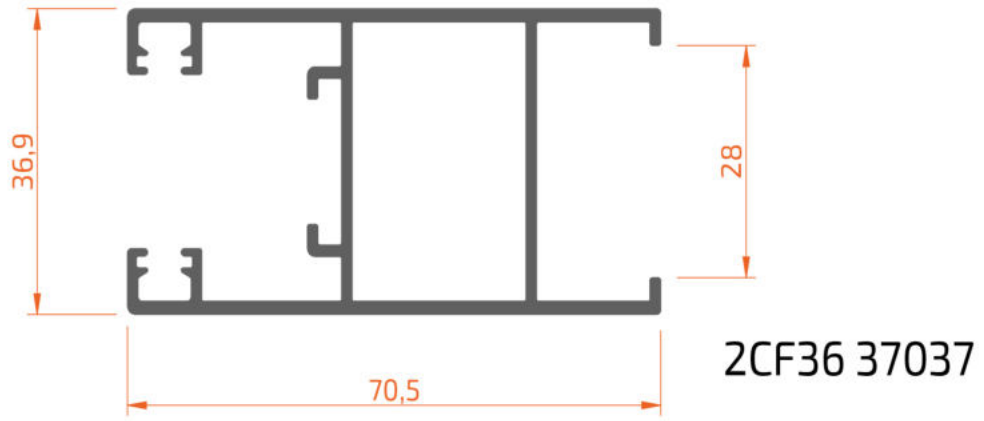
2CF36 11207



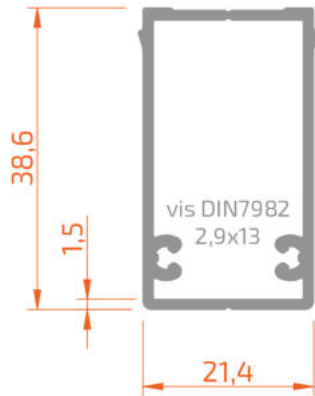
2CF36 14540



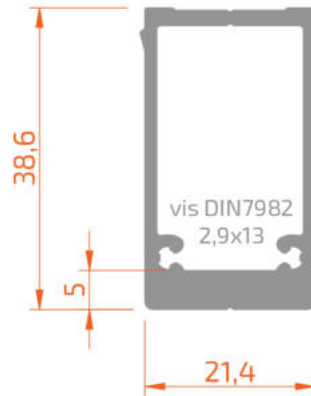
2CF36 14440



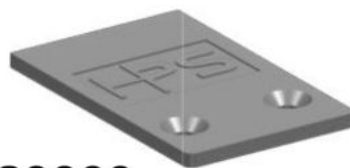
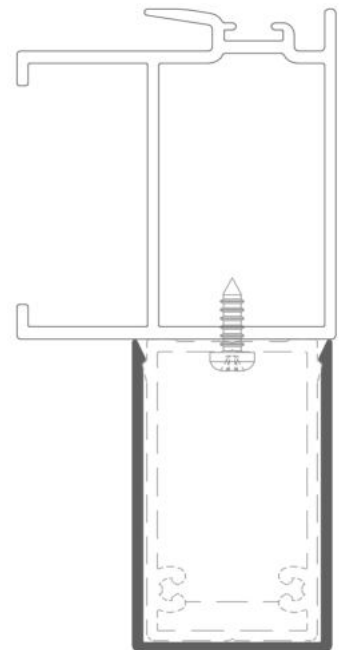
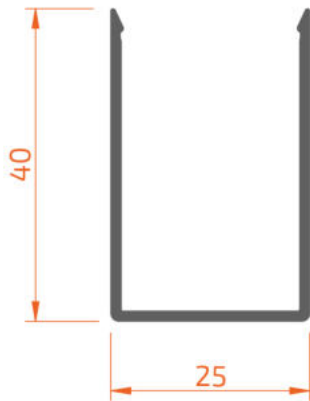
20000 62202



20000 62205



20000 62540

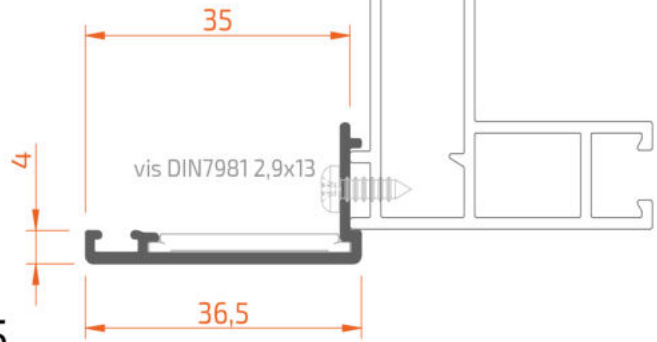


40000 80000
embout profils renfort

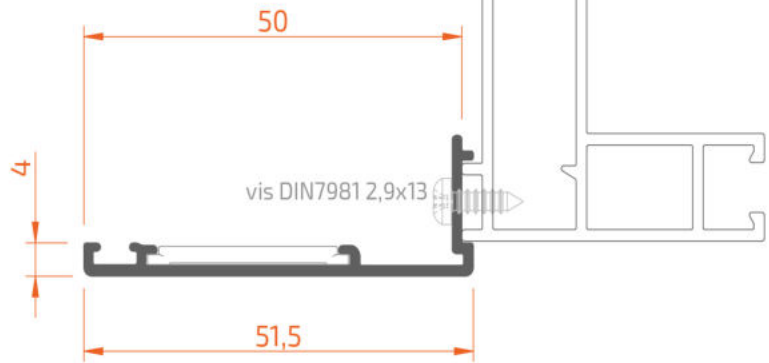
40000 22702
equerre
alignement couvre-joint



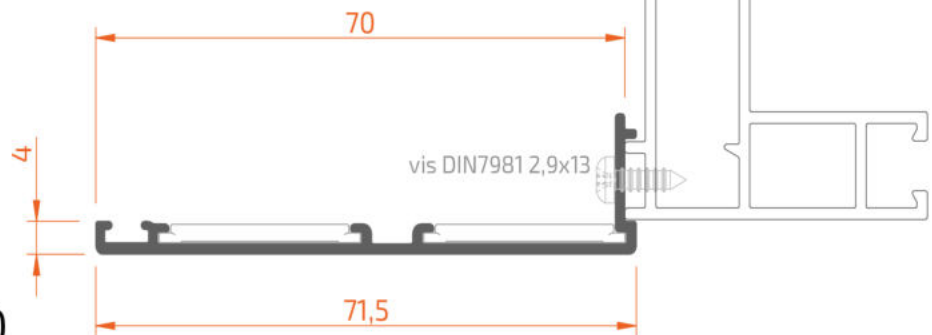
20000 91735

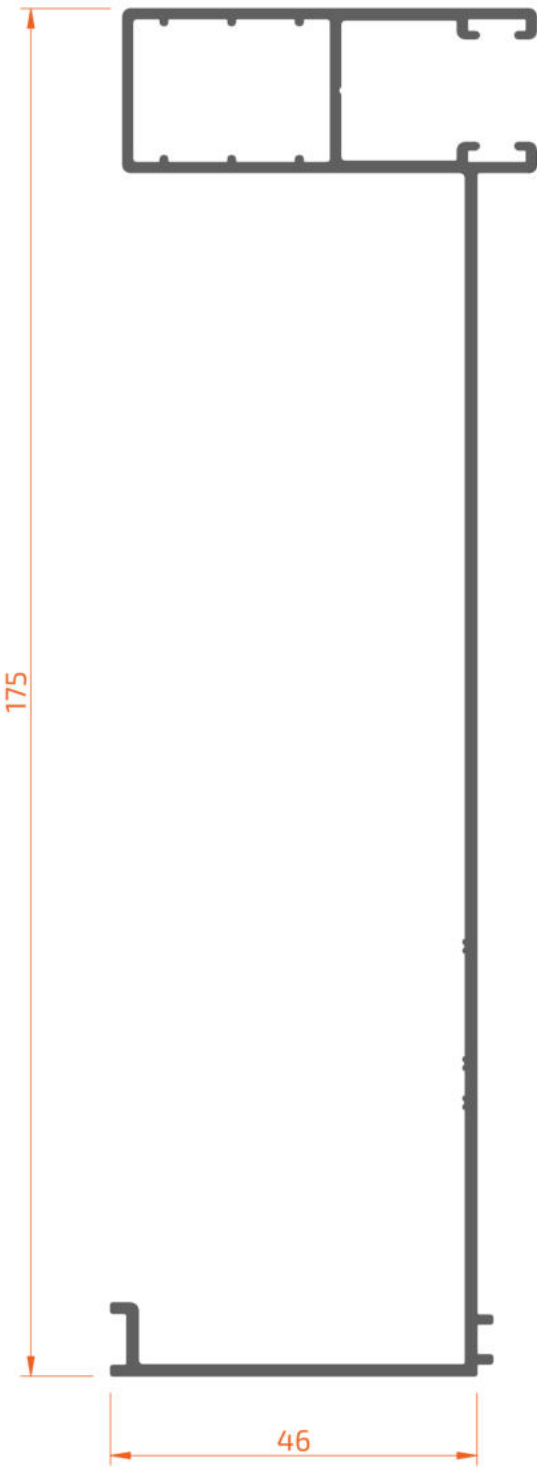


20000 91750



20000 91770

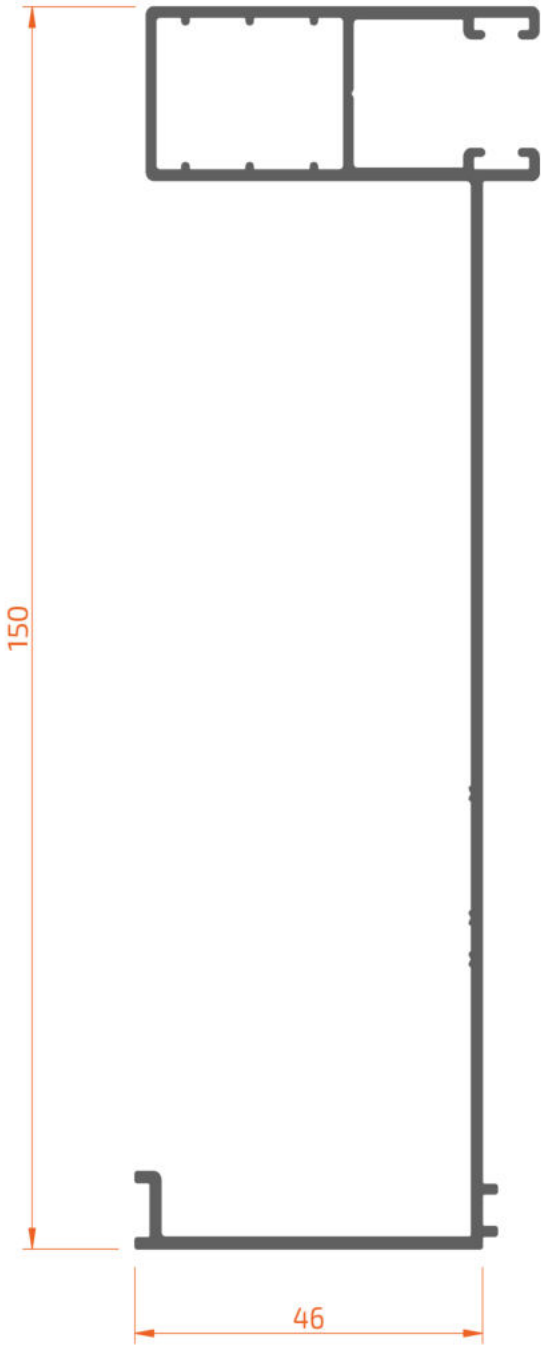




20000 98046



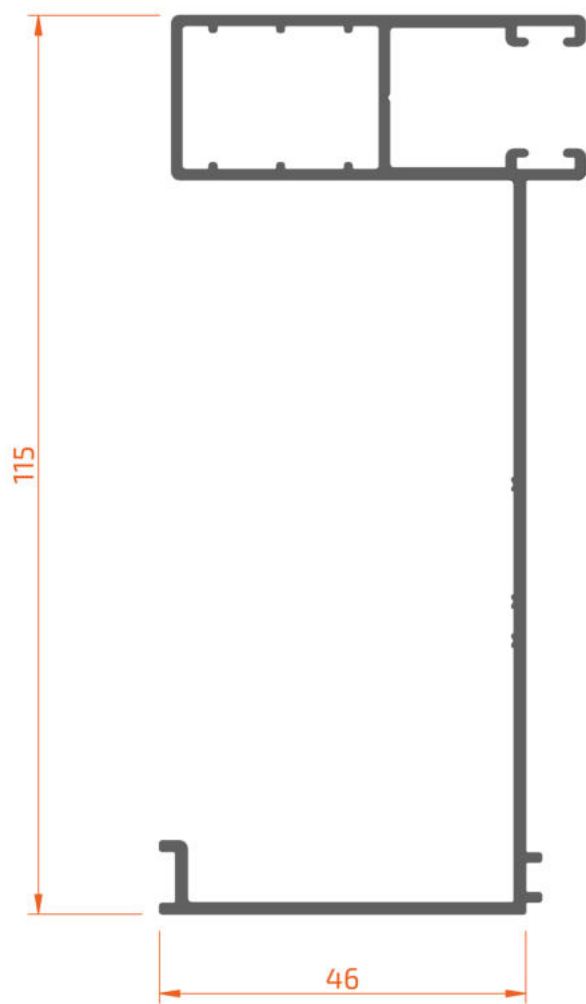
20000 98002



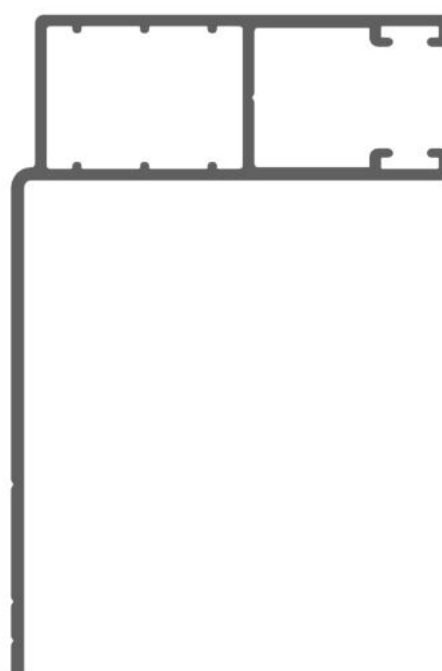
20000 95046



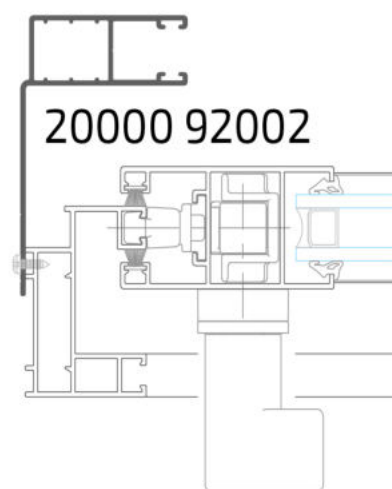
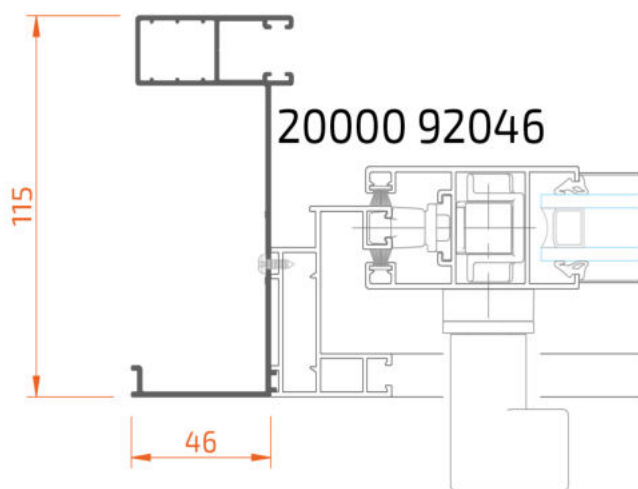
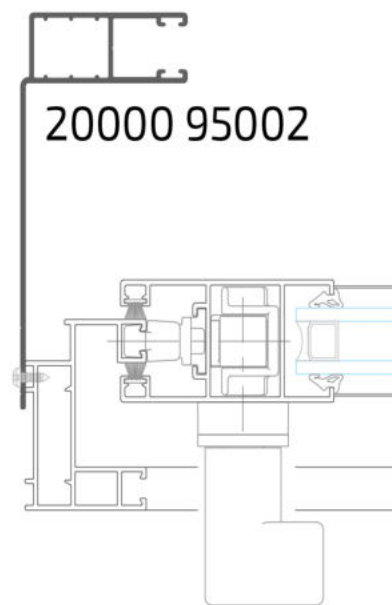
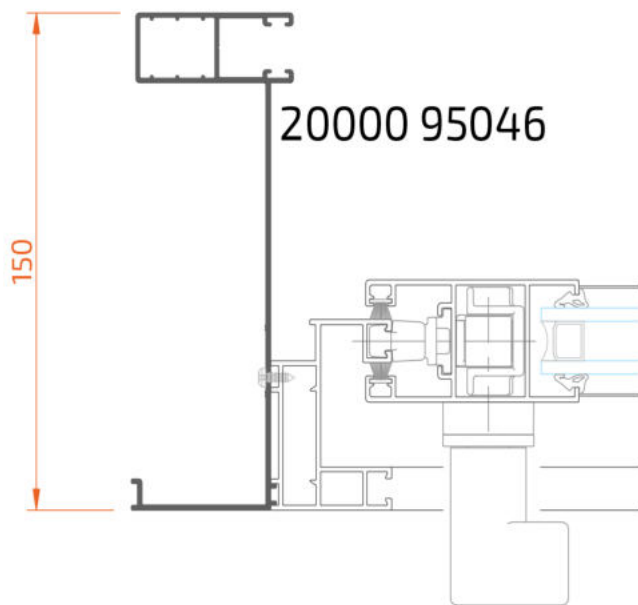
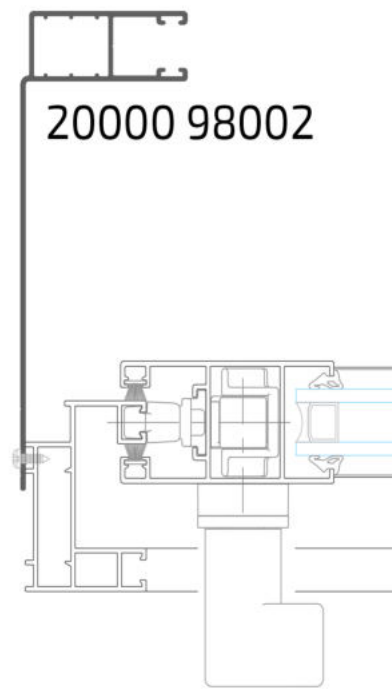
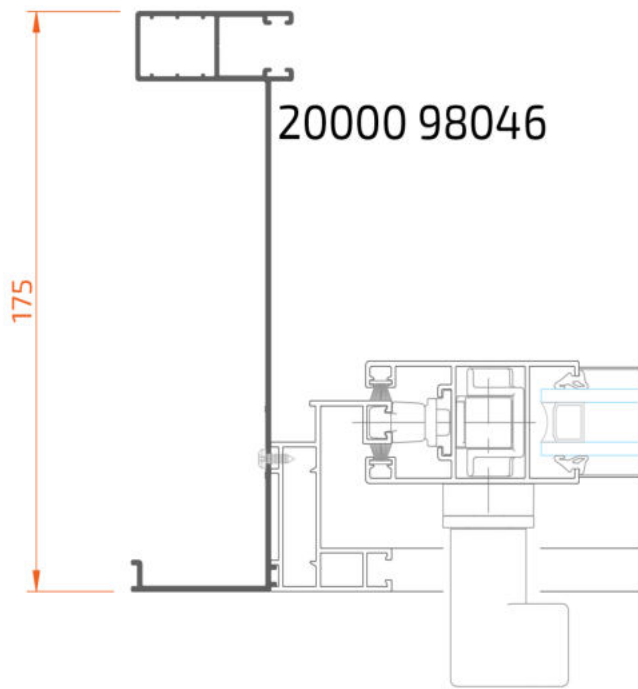
20000 95002

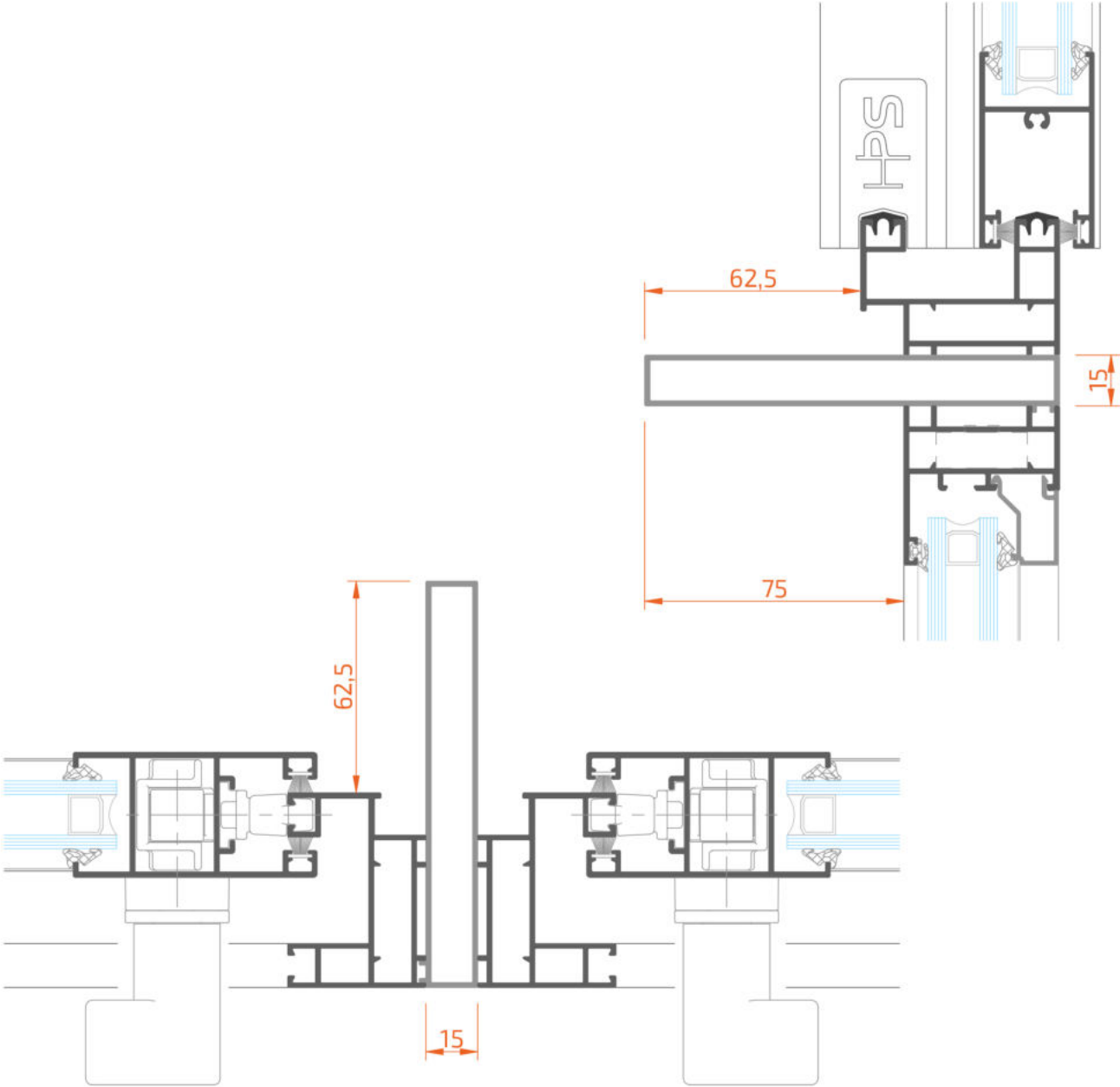
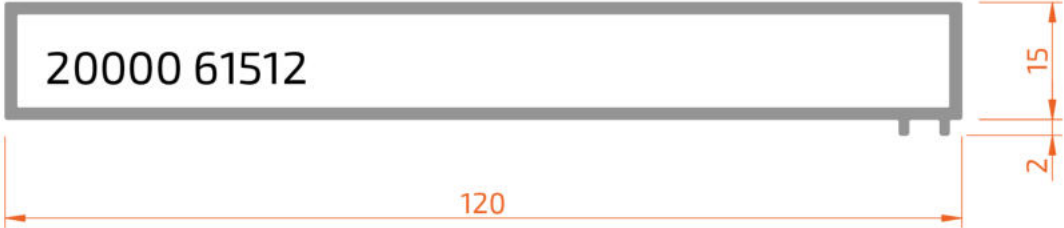


20000 92046



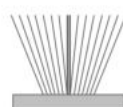
20000 92002







40000 22711
equerre d'assemblage 27x11mm



6CXXX 27070
joint brosse 7x7 HSF
avec lamine central



6XXXX 61010
bouchon rejet d'eau
avec deflecteur



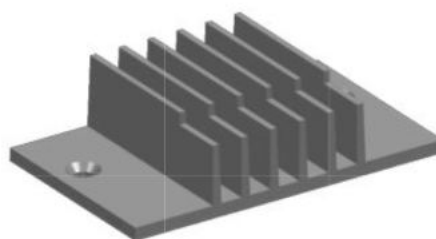
6XXXX 40034
joint de vitrage (3-4mm)



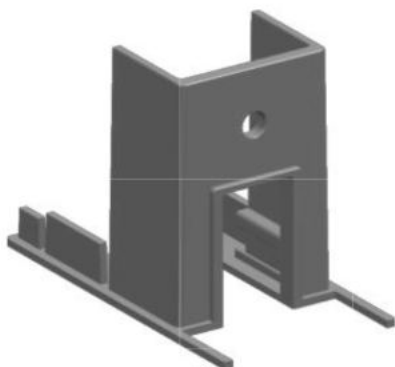
6XXXX 40056
joint de vitrage (5-6mm)



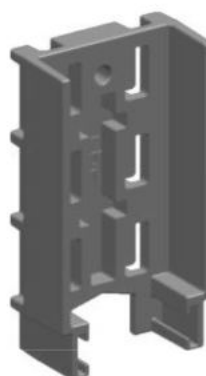
6XXXX 40079
joint de vitrage (7-9mm)



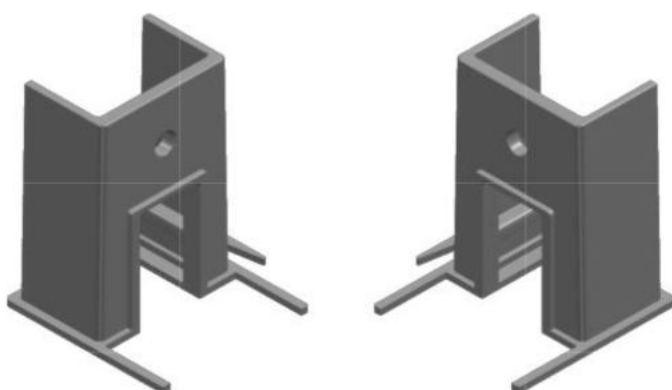
6CF36 60010
pièce d'étanchéité central



6CF36 61010
pièce d'étanchéité base
ouvrant latéral



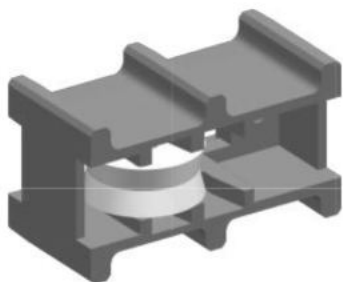
6CF36 61020
pièce d'étanchéité réglable
ouvrant latéral



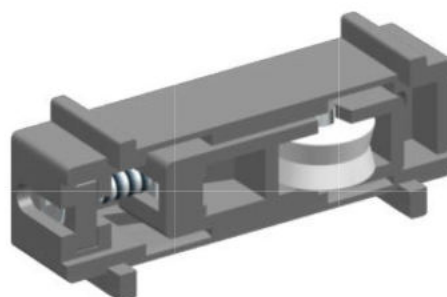
6CF36 61110
jeu pièces d'étanchéité base
ouvrant central



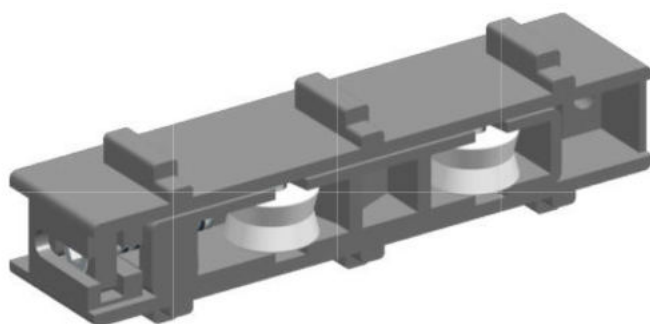
6CF36 61120
pièce d'étanchéité profil
ouvrant central



8CF36 61010
roulette simple fixe
80 kg/ouvrant



8CF36 61110
roulette simple réglable
80 kg/ouvrant



8CF36 61220
roulette tandem réglable
120 kg/ouvrant



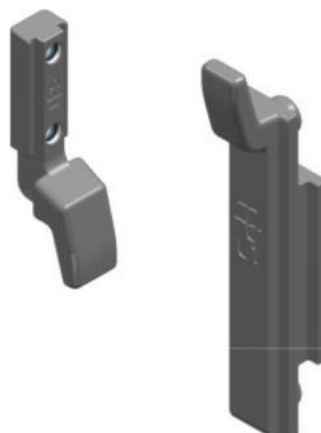
8CF36 62010
base mécanisme
transmission interne MP H36



8CXXX 62040
mécanisme transmission
interne MP



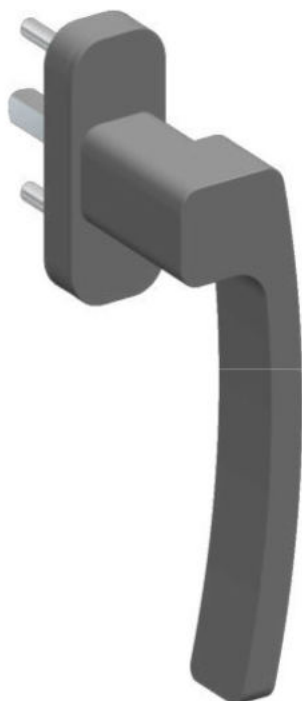
8CXXX 62050
pivot connexion
transmission-tige MP



8CXXX 62070
crochet et gâche MP



8CXXX 63110
poignée simple - Quad



8CXXX 63120
poignée coudée Droite - Quad



8CXXX 63130
poignée coudée Gauche - Quad



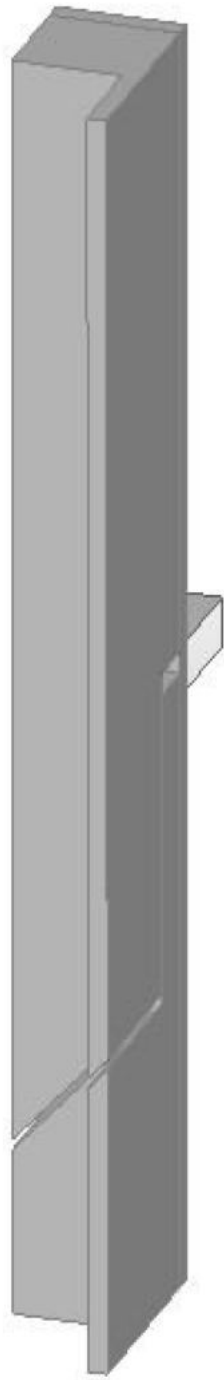
8CXXX 63210
poignée simple - Prestige



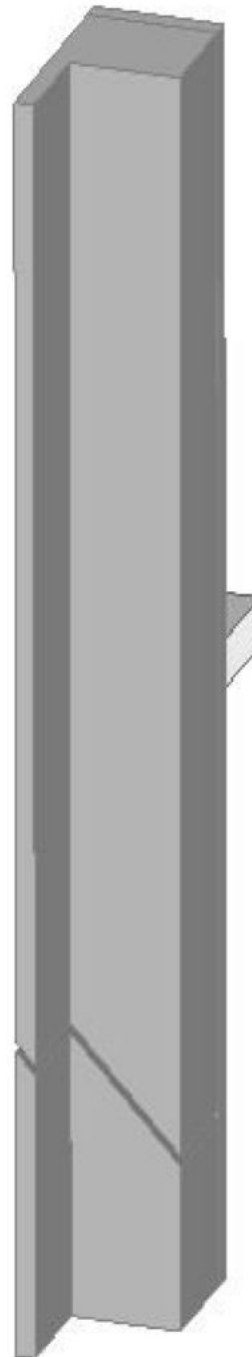
8CXXX 63220
poignée coudée Droite - Prestige



8CXXX 63230
poignée coudée Gauche - Prestige



8CXXX 63320
poignée minimaliste Droite



8CXXX 63230
poignée minimaliste gauche



épaisseur minimale du vitrage

recommandée par HPS
et sur la base de la norme EN 12488

vitrage simple

charge / vitesse VENT				surface vitrage (m ²)								
				1,0	1,5	2,0	3,0	4,0	6,0	9,0		
Pa	kg/m ²	km/h	m/s									
500	51,0	102,8	28,6				5	6	8			
750	76,5	125,9	35,0	4		5	6	8	10			
1000	101,9	145,4	40,4		5	6	8	10		-		
1250	127,4	162,5	45,2	5	6		8	10		-	-	

vitrage isolant (double vitrage)

charge / vitesse VENT				surface vitrage (m ²)								
				1,0	1,5	2,0	3,0	4,0	6,0	9,0		
Pa	kg/m ²	km/h	m/s									
500	51,0	102,8	28,6					4/5	6/6			
750	76,5	125,9	35,0	4/4			4/5	6/6	6/8			
1000	101,9	145,4	40,4			4/5	6/6	6/8		-		
1250	127,4	162,5	45,2		4/5		6/6	6/8		-	-	

	JOINT EXTÉRIEUR	VITRAGE	JOINT INTÉRIEUR
6XXXX	40034	22	40034
	40034	20	40034
	40034	18	40056
	40056	16	40056
	40056	14	40079
	40079	12	40079
	40079	10	40079



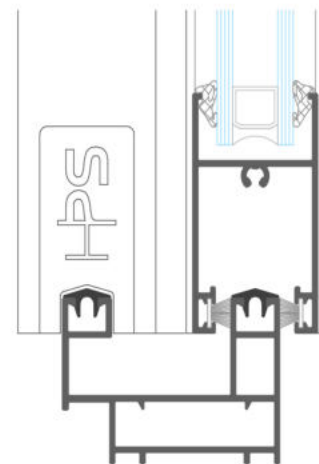
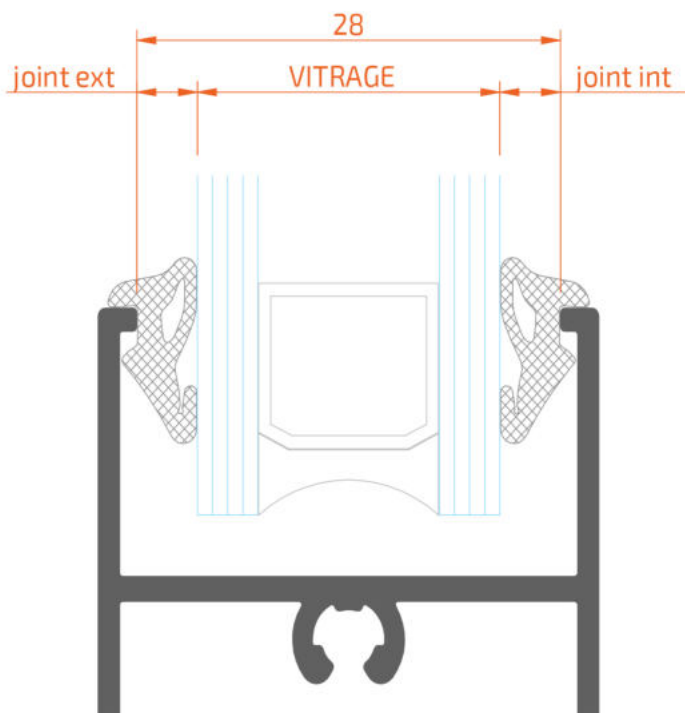
6XXXX 40056
joint de vitrage (5-6mm)



6XXXX 40034
joint de vitrage (3-4mm)



6XXXX 40079
joint de vitrage (7-9mm)

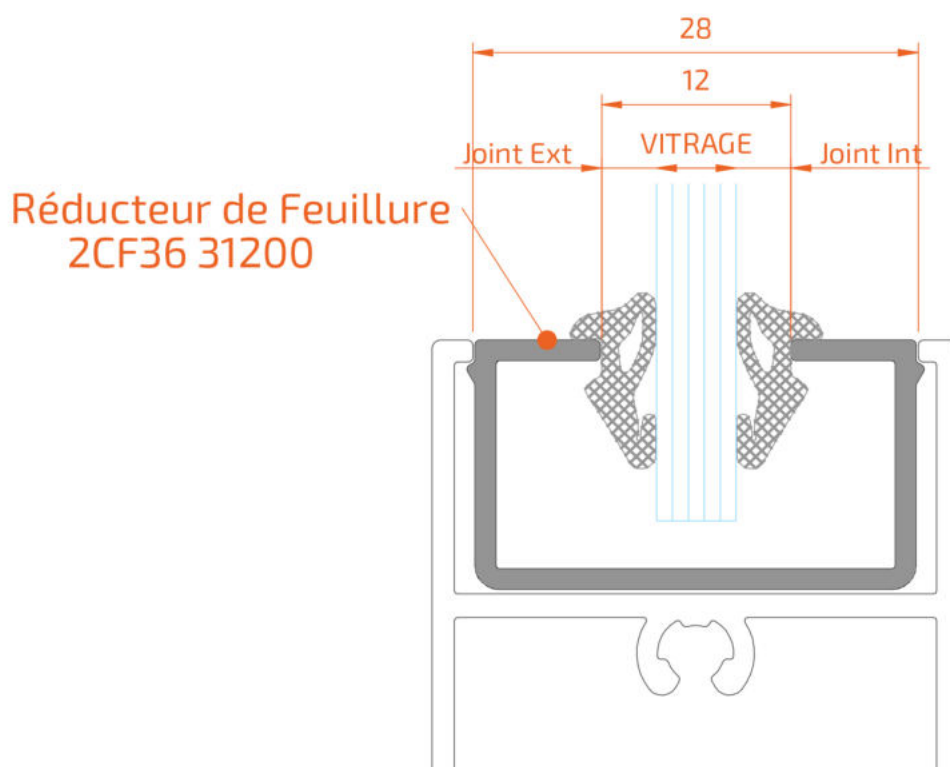


Avec Réducteur de Feuillure

6XXXX	40034	6	6XXXX	40034
	40034	5		40034
	40034	4		40034



6XXXX 40034
joint de vitrage (3-4mm)



4.02 - 4.03

Fenêtre our porte-fenêtre a deux ouvrants

4.04 - 4.05

Fenêtre our porte-fenêtre a trois ouvrants

4.06

Couvre-joint pour fenêtre (quatre côtés)

4.07

Couvre-joint pour porte-fenêtre (trois côtés)

4.08

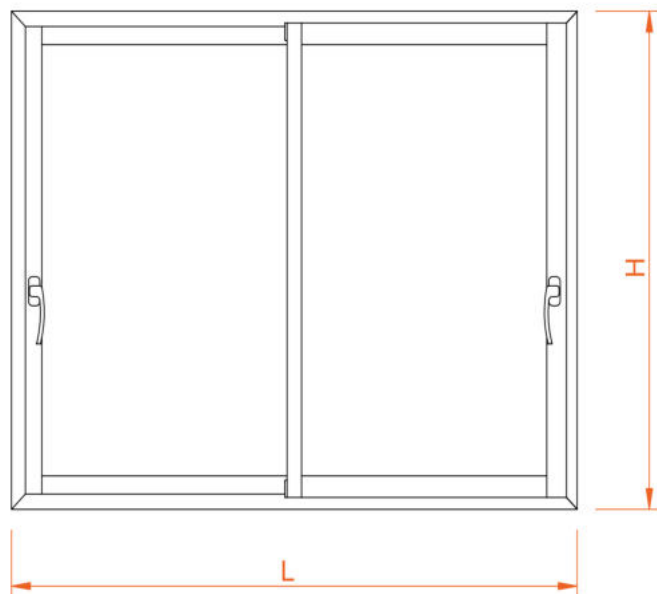
Glissières et couvre-joint pour fenêtre avec caisson monobloc (quatre côtés)

4.09

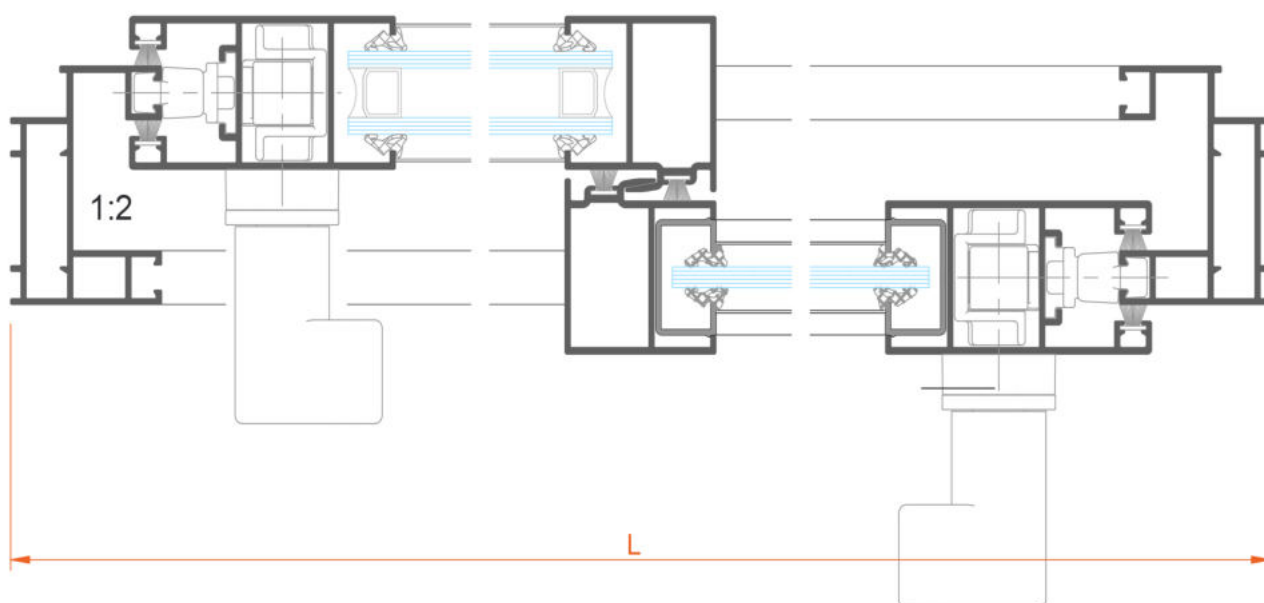
Glissières et couvre-joint pour porte-fenêtre avec caisson monobloc (trois côtés)

4.10

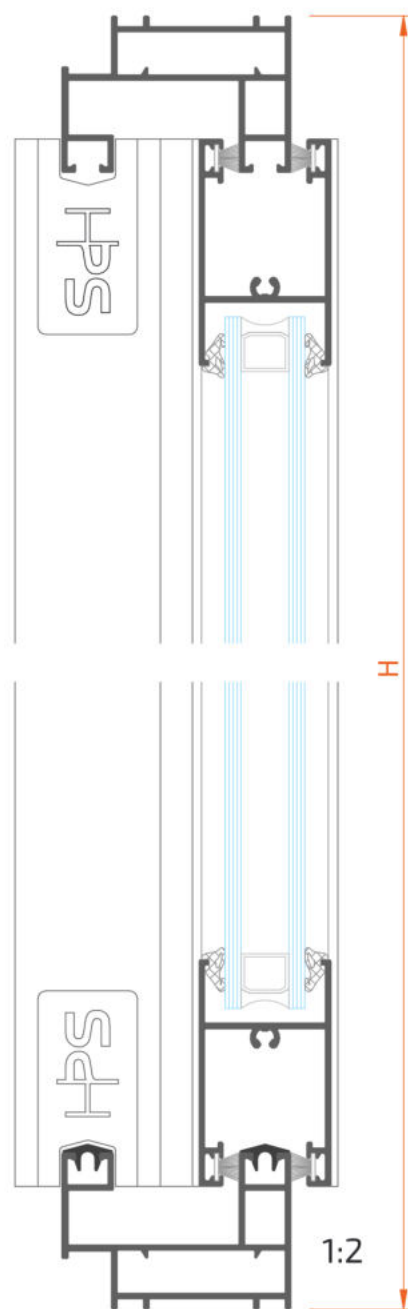
Profils de renforcement vertical ouvrants

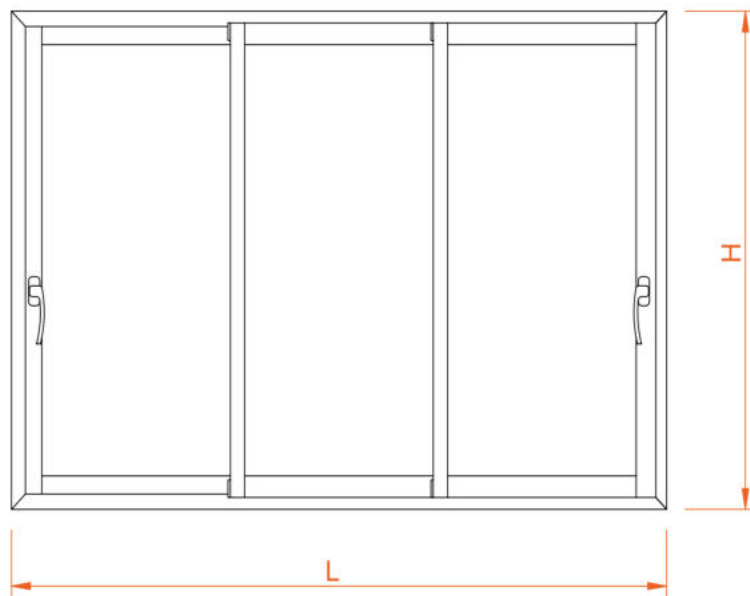


Profil	Dessin	Coupe	Quantité	Formule
2CF36 14540			2	L
			2	H
2CF36 11207			2	L-80,5
2CF36 35833			4	(L-179) / 2
2CF36 37037			2	H-66
2CF36 34037			2	H-66
vitrage (2)			(L-194)/2 x H-154	

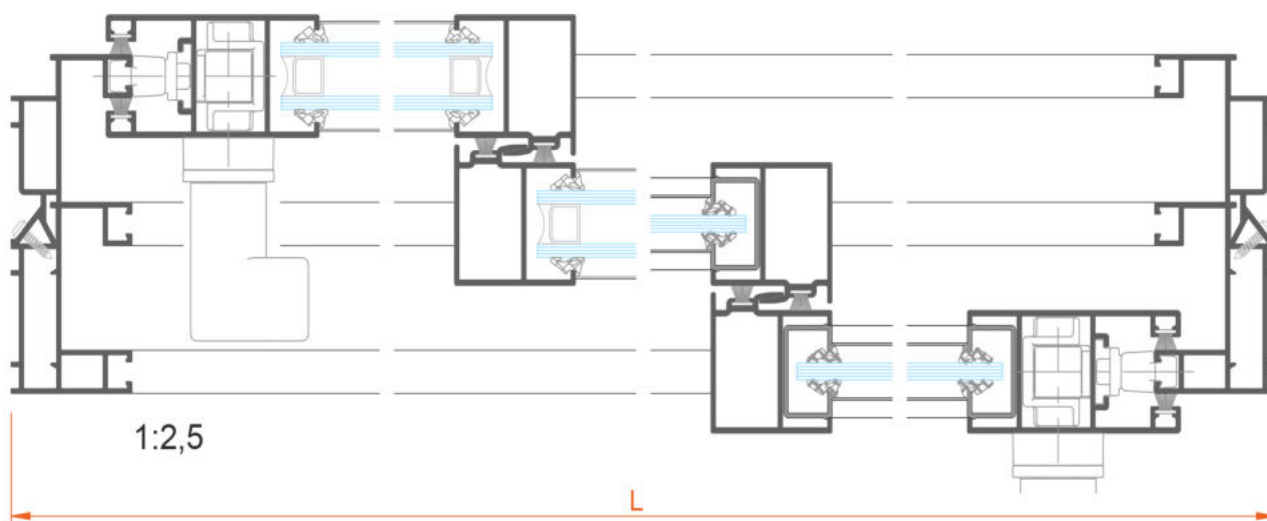


Accessoire	Dessin	Description	Quantité
40000 22711		équerre dormant	4
		vis assemblage ouvrant DIN7981 4,8 x 25	8
6CXXX 27070		joint brosse	4L + 6H
6XXXX 61010		bouchon rejet d'eau	1-3
voir 3.02		joint de vitrage	4L + 8H
6CF36 60010		pièce d'étanchéité central	2
6CF36 61010		pièce base étanchéité ouvrant latéral	4
6CF36 61020		pièce réglable étanchéité ouvrant latéral	4
6CF36 61110		jeu pièces base étanchéité ouvrant central	2
6CF36 61120		pièce étanchéité profil ouvrant central	4
voir 2.04		roulette	4
8CF36 62010		base mécanisme transmission	2
8CXXX 62040		mécanisme transmission MP	2
8CXXX 62050		pivot connexion tige - MP	4
6CF36 62070		crochet et gache MP	8
voir 2.06		poignée coudée Droite	1
voir 2.06		poignée coudée Gauche	1




















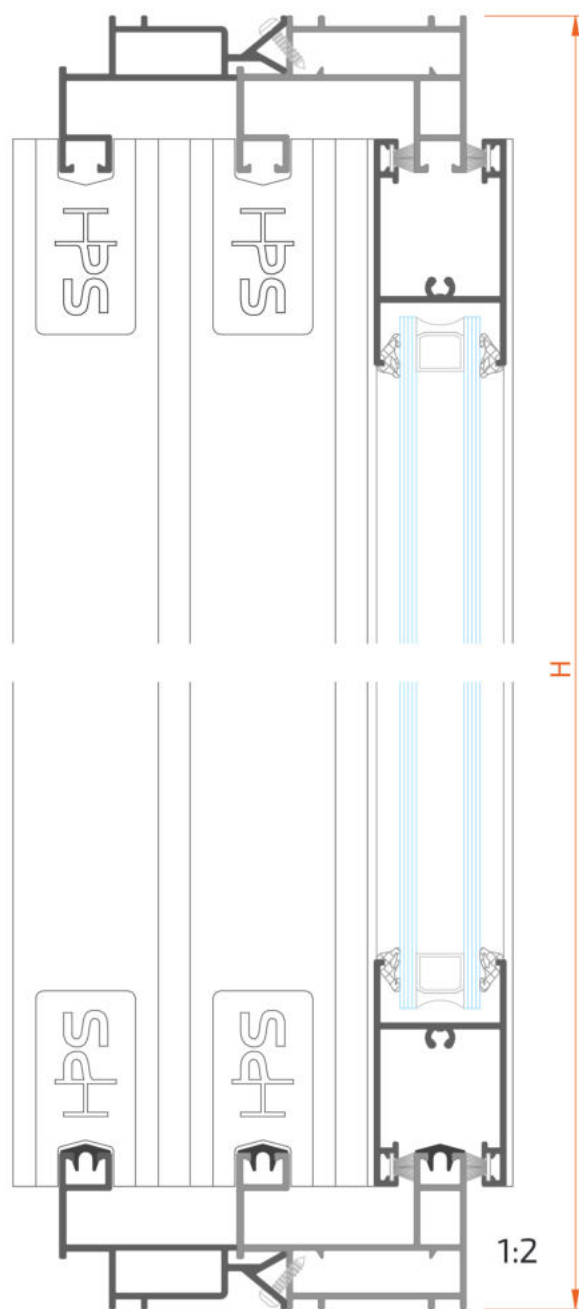


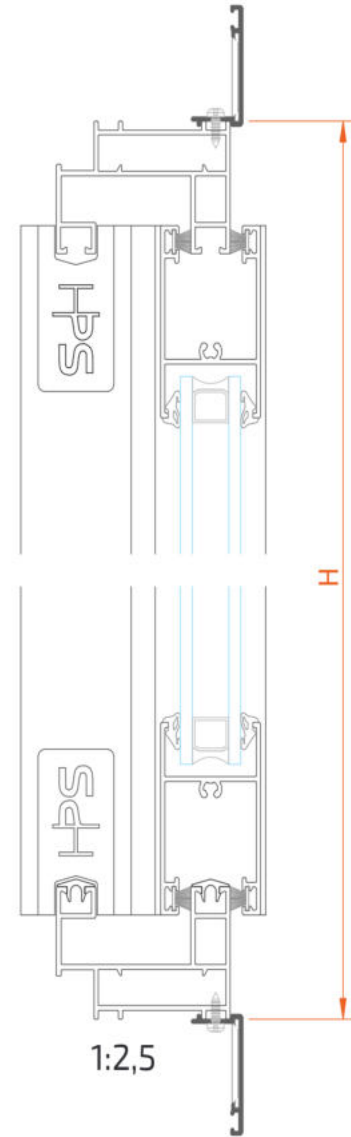
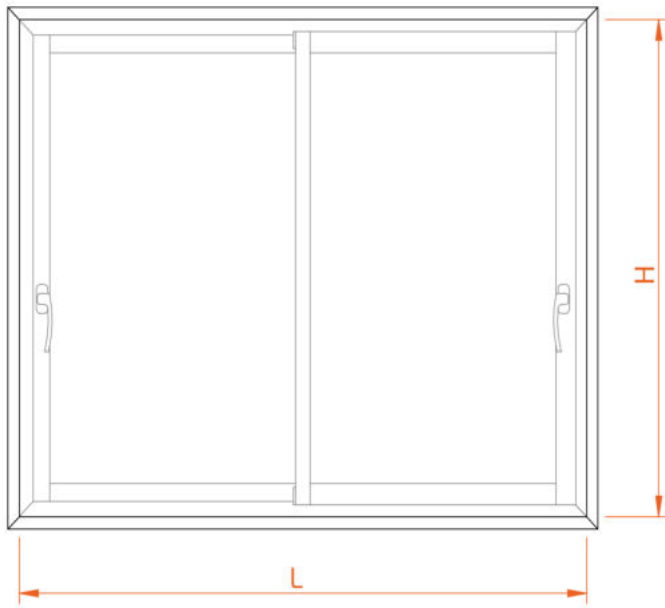
Profil	Dessin	Coupe	Quantité	Formule
2CF36 14540			2	L
			2	H
2CF36 14440			2	L
			2	H
2CF36 11207			3	L-80,5
2CF36 35833			6	(L-186) / 3
2CF36 37037			2	H-66
2CF36 34037			4	H-66
vitrage (3)			(L-209)/3 x H-154	



Coupes et débitages

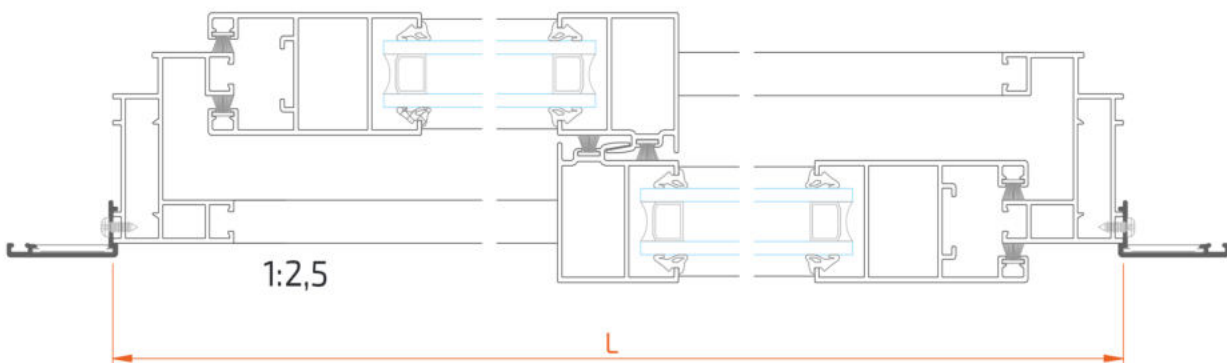
Accessoire	Dessin	Description	Quantité
40000 22711		équerre dormant	8
		vis assemblage ouvrant DIN7981 4,8 x 25	12
6CXXX 27070		joint brosse	4L + 8H
6XXXX 61010		bouchon rejet d'eau	1-4
voir 3.02		joint de vitrage	4L + 12H
6CF36 60010		pièce d'étanchéité central	4
6CF36 61010		pièce base étanchéité ouvrant latéral	4
6CF36 61020		pièce réglable étanchéité ouvrant latéral	4
6CF36 61110		jeu pièces base étanchéité ouvrant central	4
6CF36 61120		pièce étanchéité profil ouvrant central	8
voir 2.04		roulette	6
8CF36 62010		base mécanisme transmission	2
8CXXX 62040		mécanisme transmission MP	2
8CXXX 62050		pivot connexion tige - MP	4
6CF36 62070		crochet et gache MP	8
voir 2.06		poignée coudée Droite	1
voir 2.06		poignée coudée Gauche	1



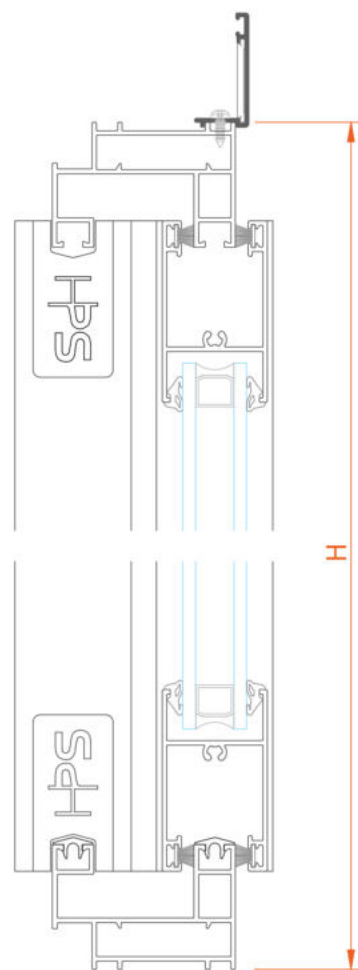
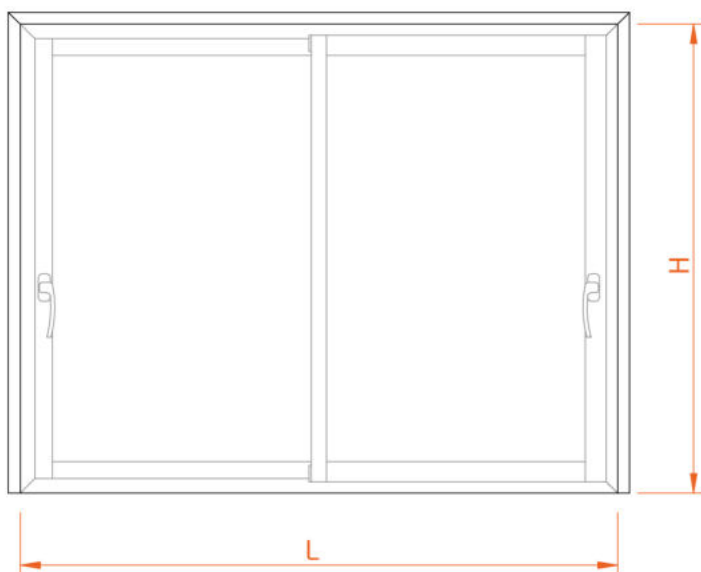


Profil	Dessin	Coupe	Quantité	Formule
20000 91735			2	L + 70
			2	H + 70
20000 91750			2	L + 100
			2	H + 100
20000 91770			2	L + 140
			2	H + 140

20000 91735	équerre alignement 40000 22711 	4
20000 91750		4
20000 91770		8
<i>vis fixation couvre-joint - DIN 7981 2,9 x 9,5</i>		



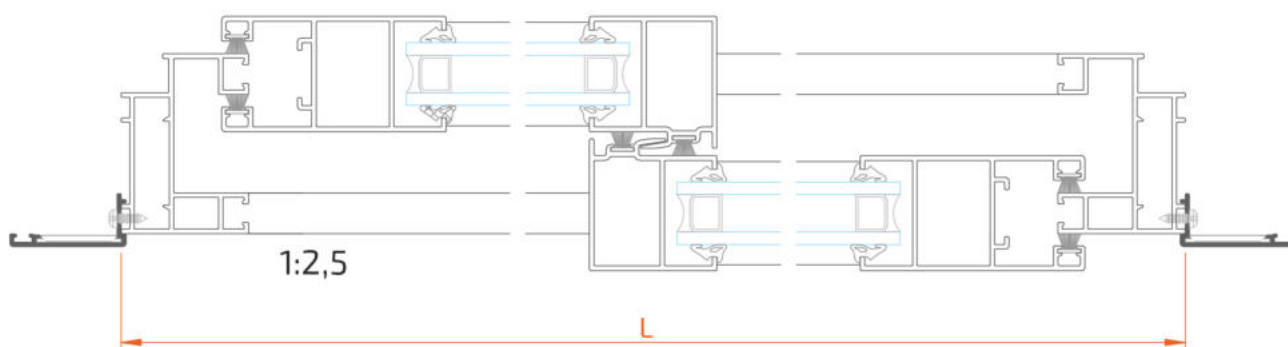
Coupes et débitages

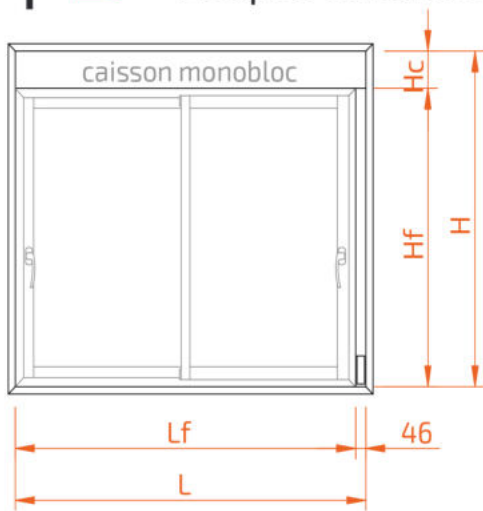


Profil	Dessin	Coupe	Quantité	Formule
20000 91735			1	L + 70
			2	H + 35
20000 91750			1	L + 100
			2	H + 50
20000 91770			1	L + 140
			2	H + 70

1:2,5

20000 91735	équerre alignement 40000 22711	2
20000 91750		2
20000 91770		4
<i>vis fixation couvre-joint - DIN 7981 2,9 x 9,5</i>		



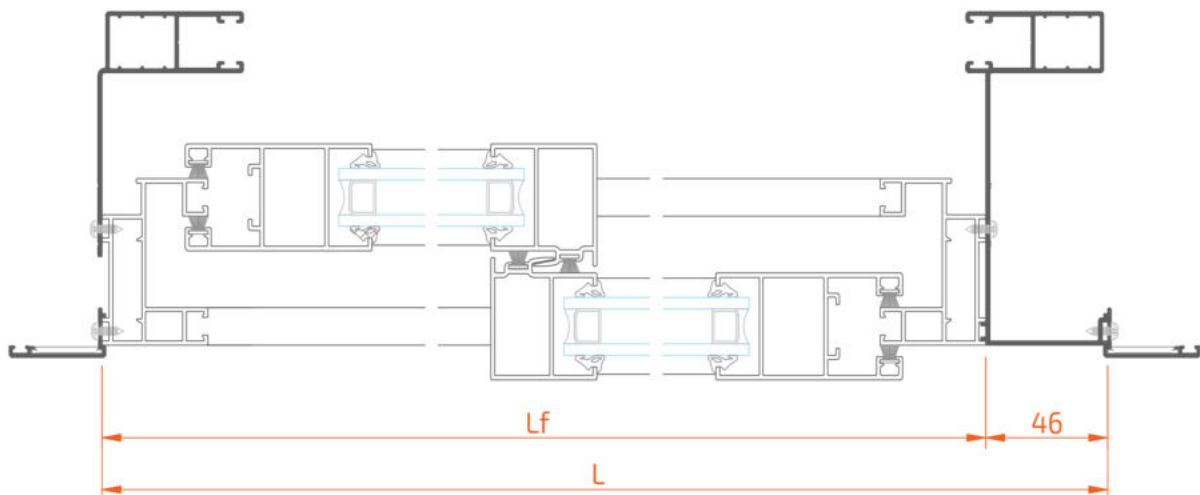
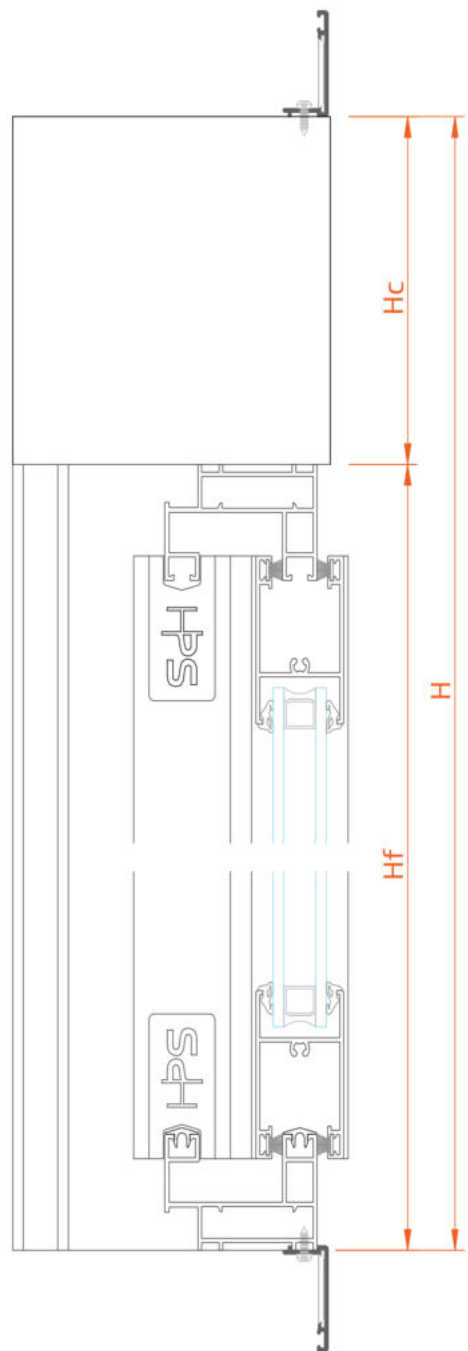


Profil	Dessin	Coupe	Quantité	Formule
20000 91735			2	$L_f + 46 + 70$
			2	$H_f + H_c + 71,5$
20000 91750			2	$L_f + 46 + 100$
			2	$H_f + H_c + 101,5$
20000 91770			2	$L_f + 46 + 140$
			2	$H_f + H_c + 141,5$

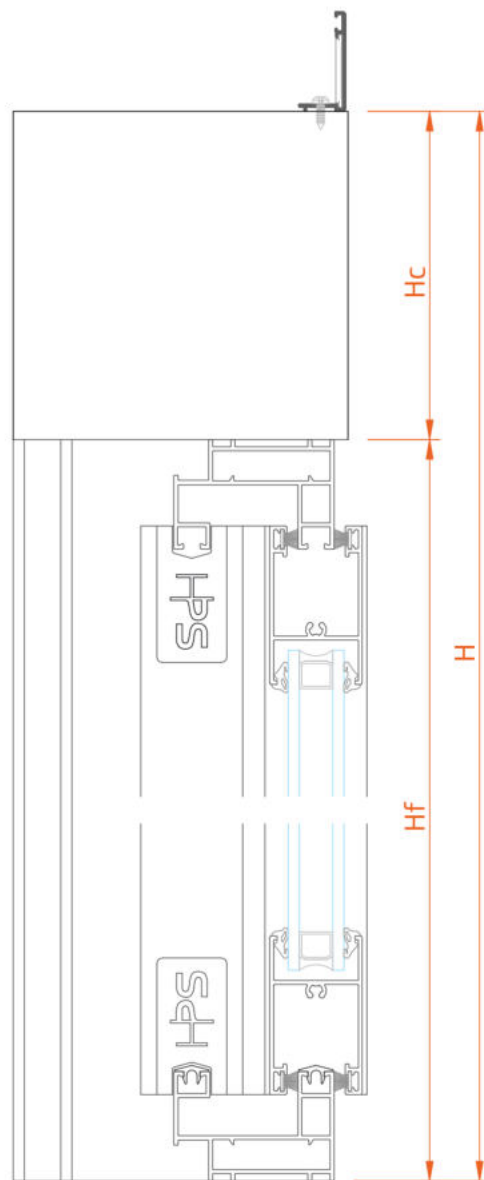
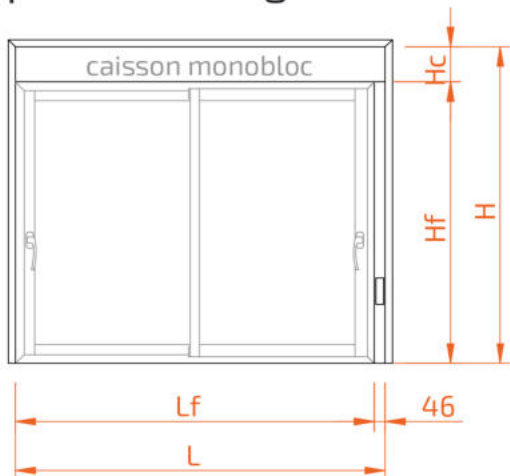
20000 98002			1	Hf
20000 95002				
20000 92002				
20000 98046			1	Hf
20000 95046				
20000 92046				

longueur du caisson = $L - 3,5$ ($L_f + 42,5$)

20000 91735	équerre alignement 40000 22702	4
20000 91750		4
20000 91770		8
vis fixation couvre-joint / glissière - DIN 7981 2,9 x 9,5		



Coupes et débitages



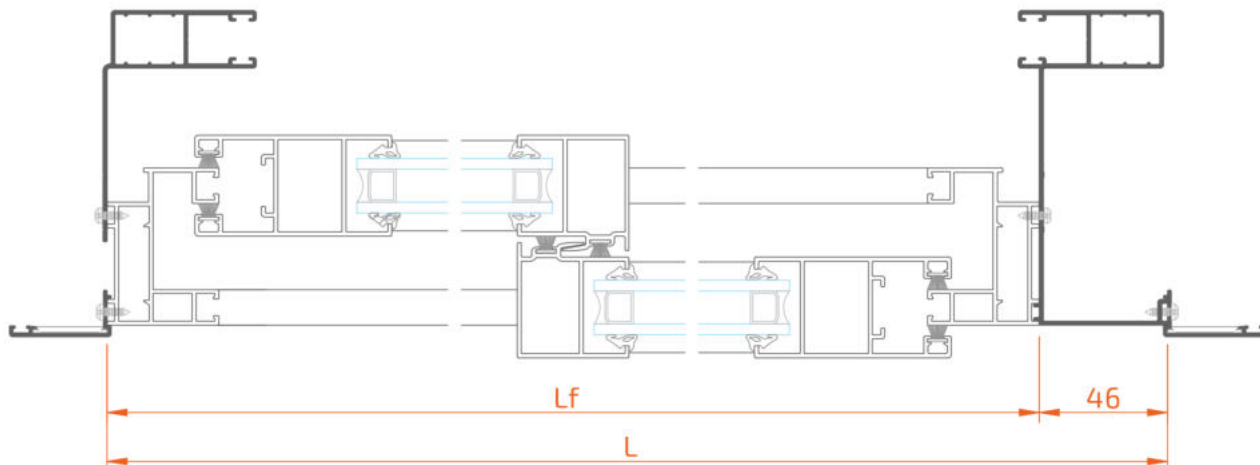
Profil	Dessin	Coupe	Quantité	Formule
20000 91735			1	$Lf + 46 + 70$
			2	$Hf + Hc + 36,5$
20000 91750			1	$Lf + 46 + 100$
			2	$Hf + Hc + 51,5$
20000 91770			1	$Lf + 46 + 140$
			2	$Hf + Hc + 71,5$

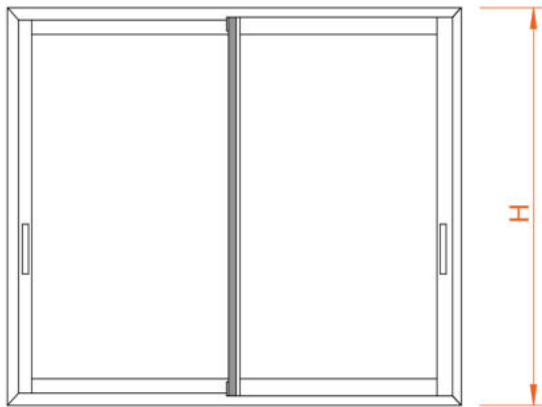
20000 98002			1	Hf
20000 95002				
20000 92002				
20000 98046			1	Hf
20000 95046				
20000 92046				

longueur du caisson = $L - 3,5$ ($Lf + 42,5$)

20000 91735	équerre alignement 40000 22702	2
20000 91750		2
20000 91770		4

vis fixation couvre-joint / glissière - DIN 7981 2,9 x 9,5





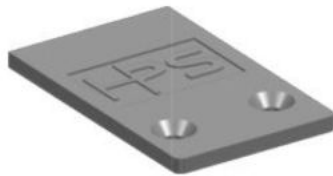
vis fixation renfort - DIN7981 3,2x9,5 (chaque 400mm)

Profil	Dessin	Coupe	Quantité	Formule
20000 62202			2	H-66*
20000 62205				
20000 62540			2	H-66*

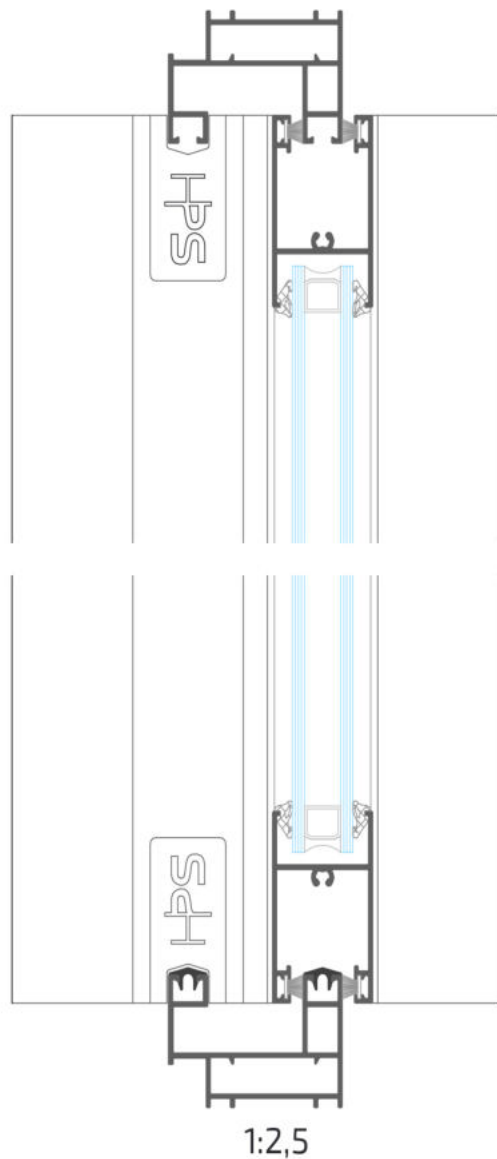
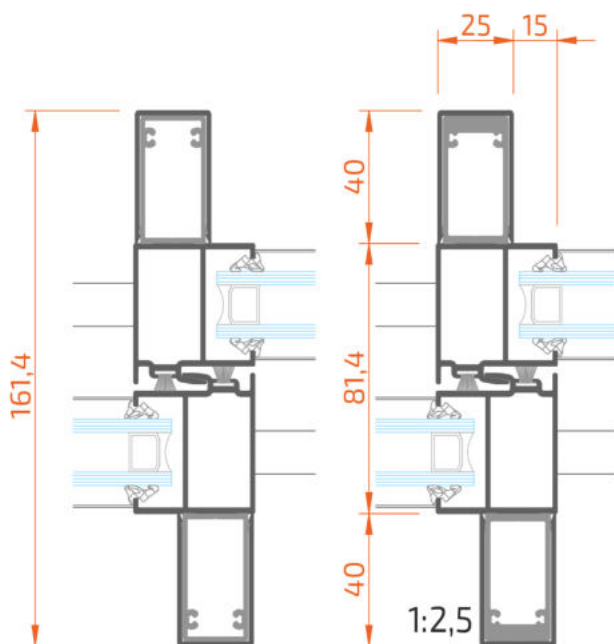
Profil	Dessin	Coupe	Quantité	Formule
20000 62202			2	H-70**
20000 62205				
20000 62540			2	H-70**

* sans embout 40000.80000

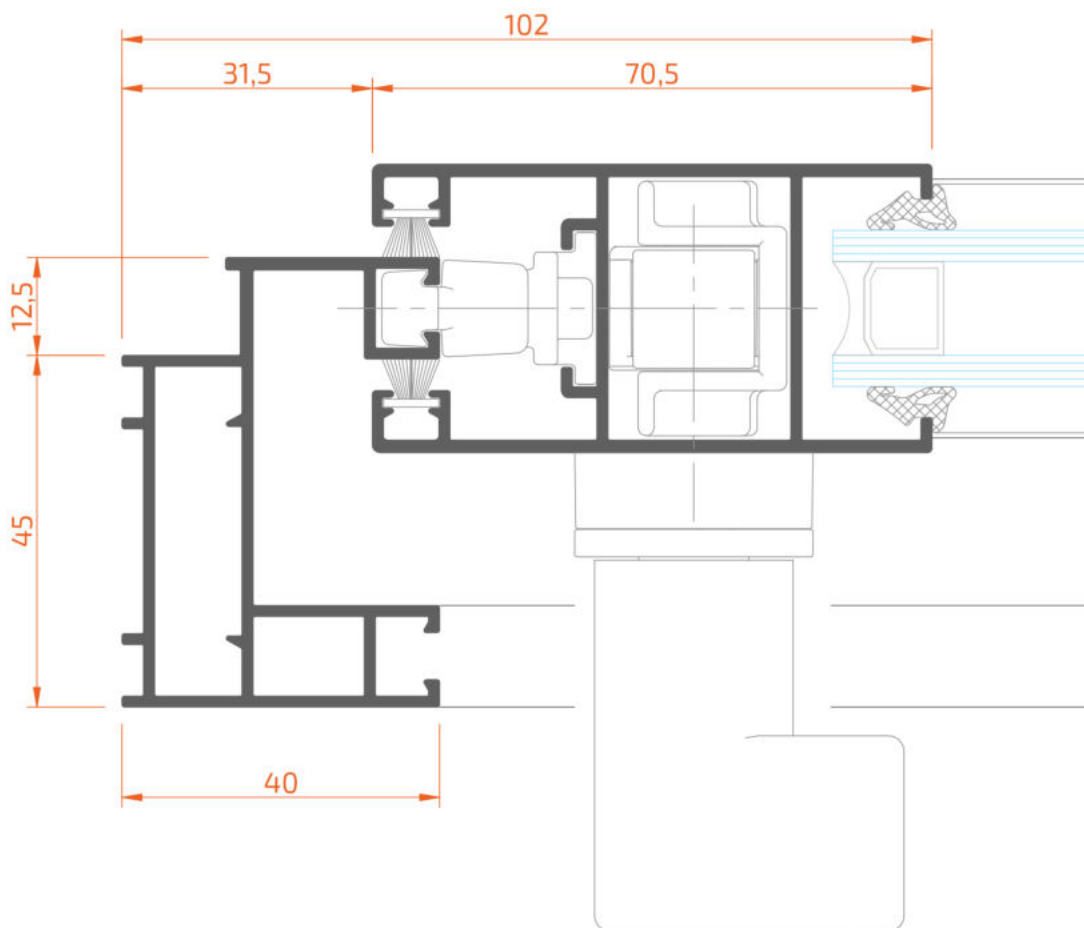
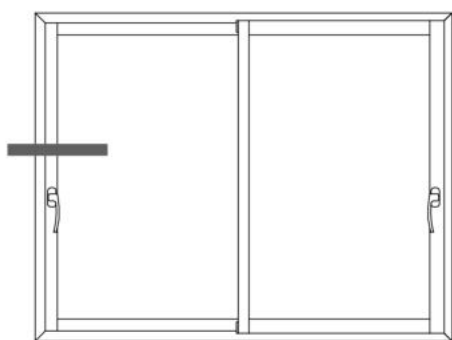
** avec embout 40000.80000

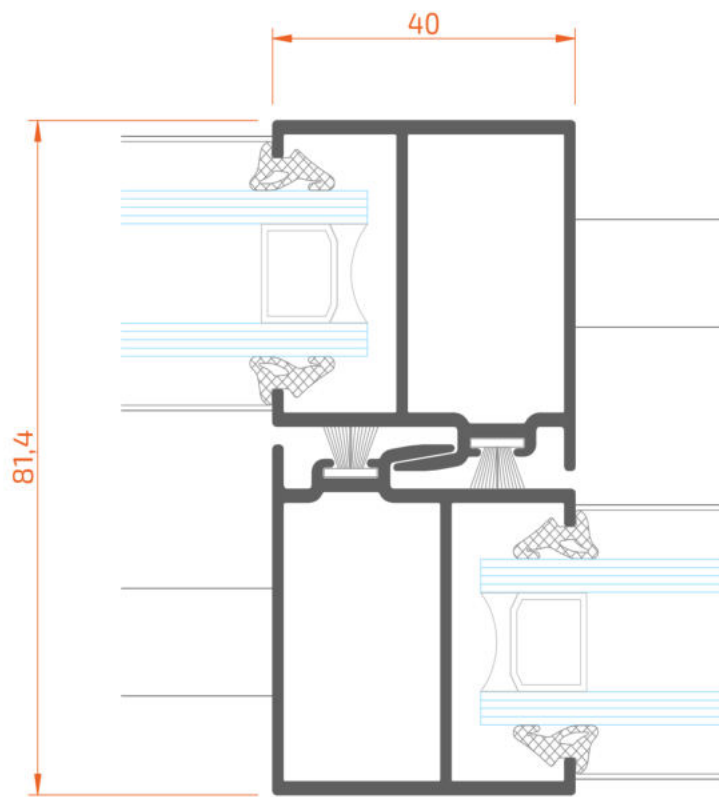
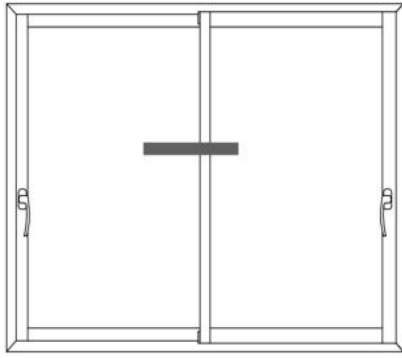


40000 80000
embout profils renfort

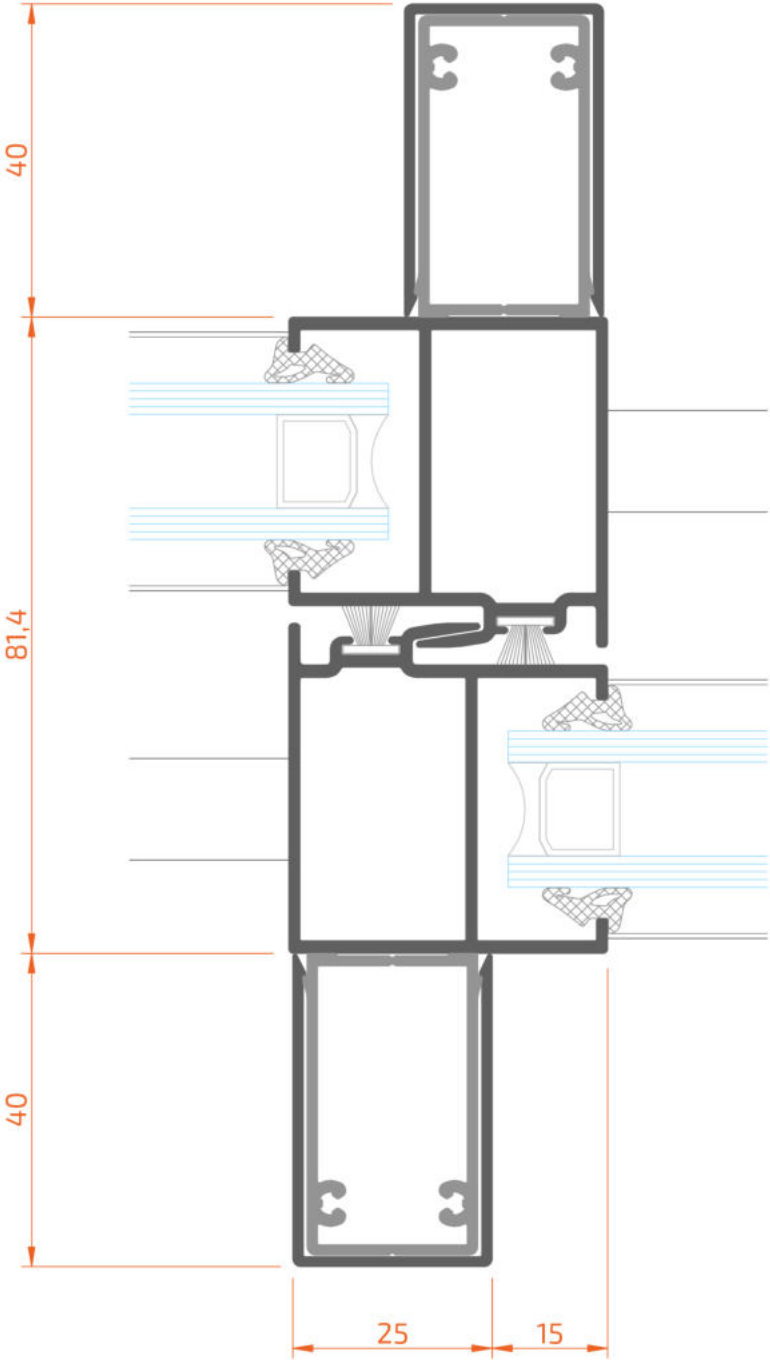
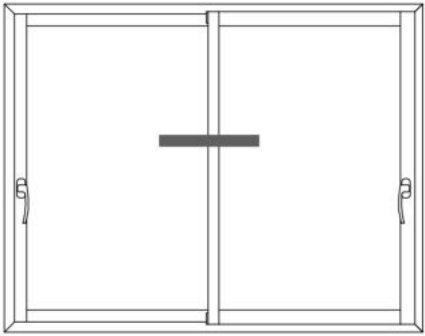


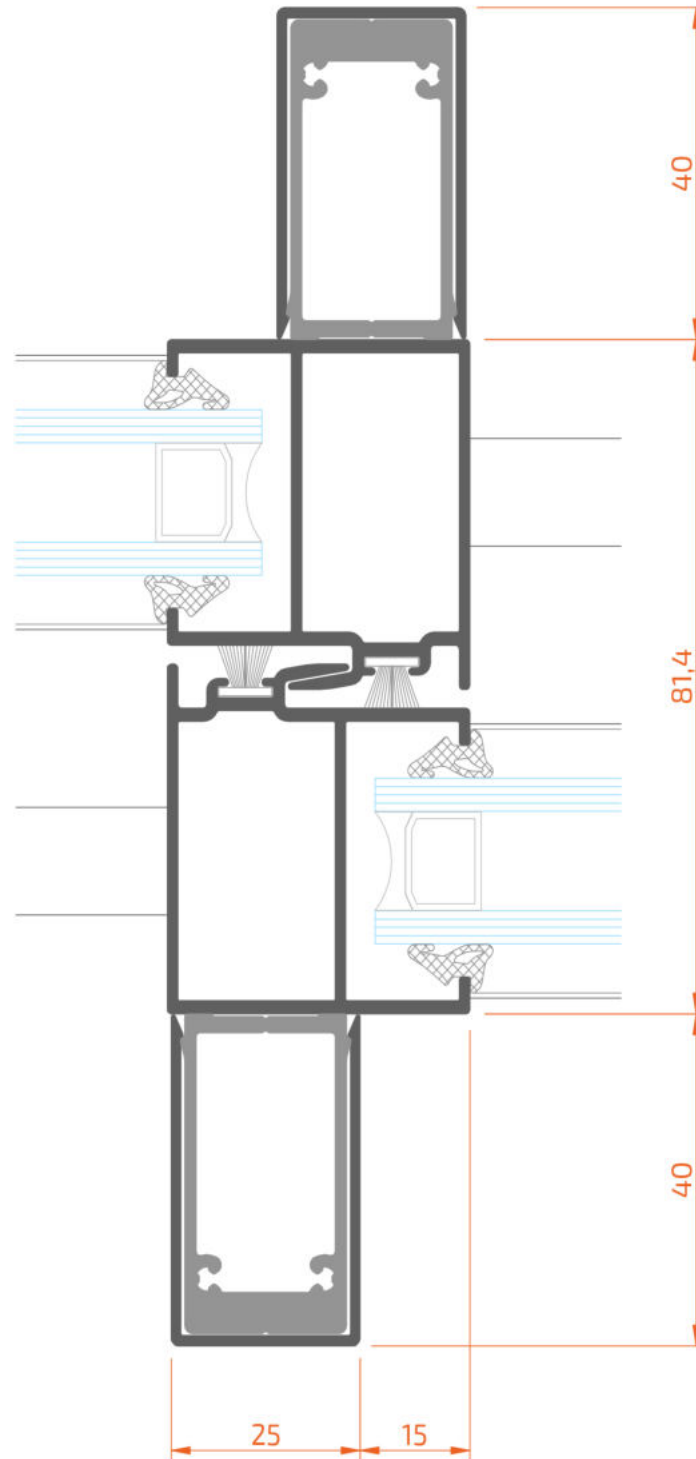
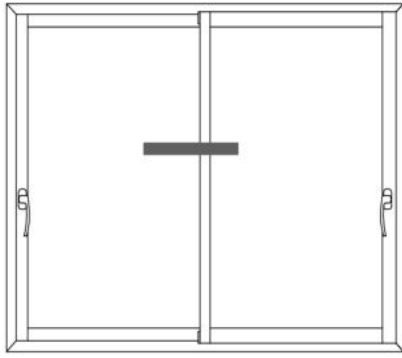
Sections echelle 1:1



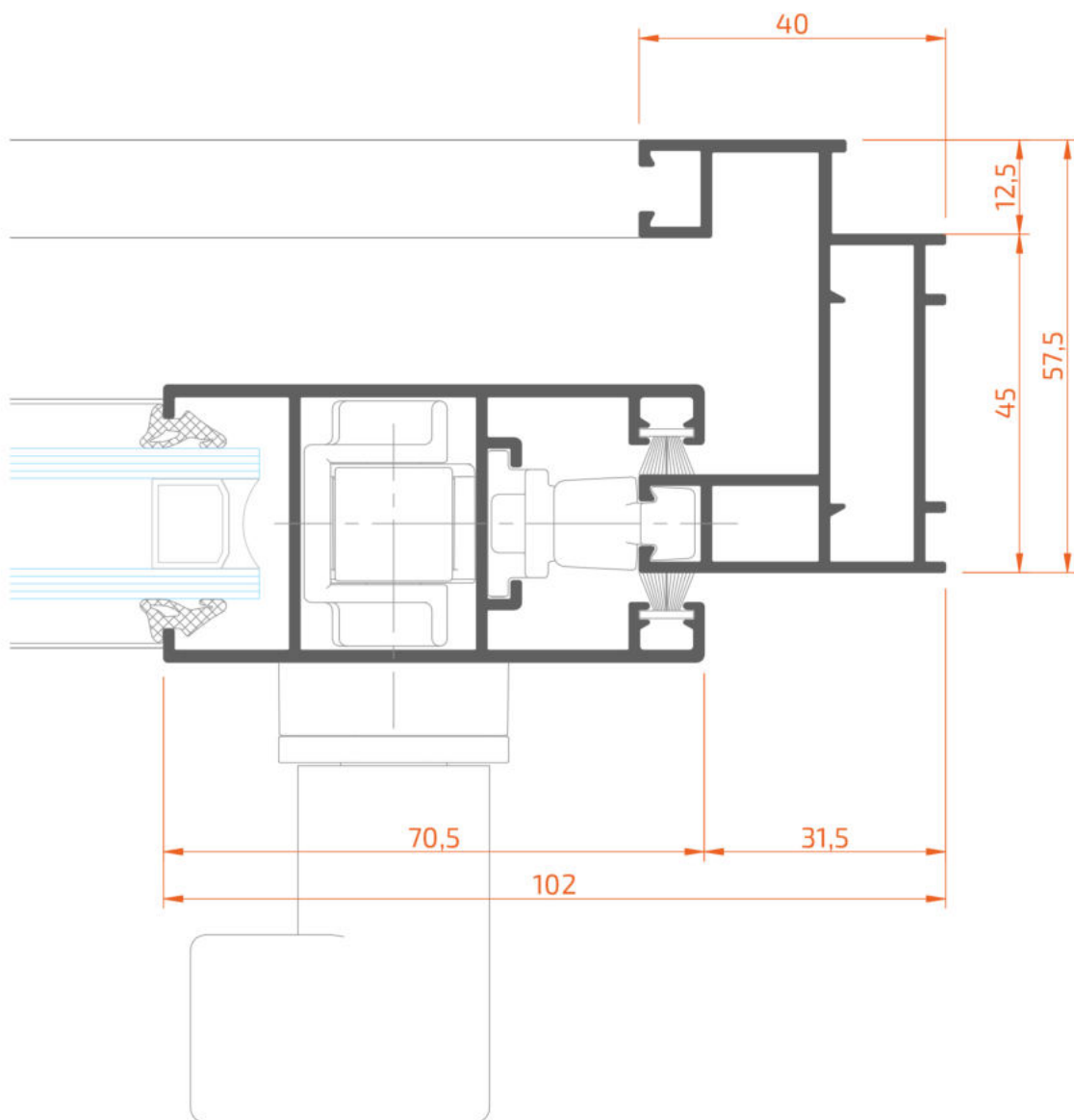
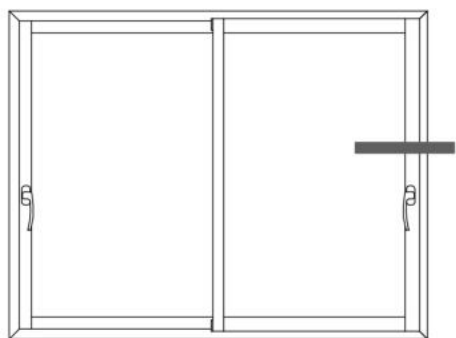


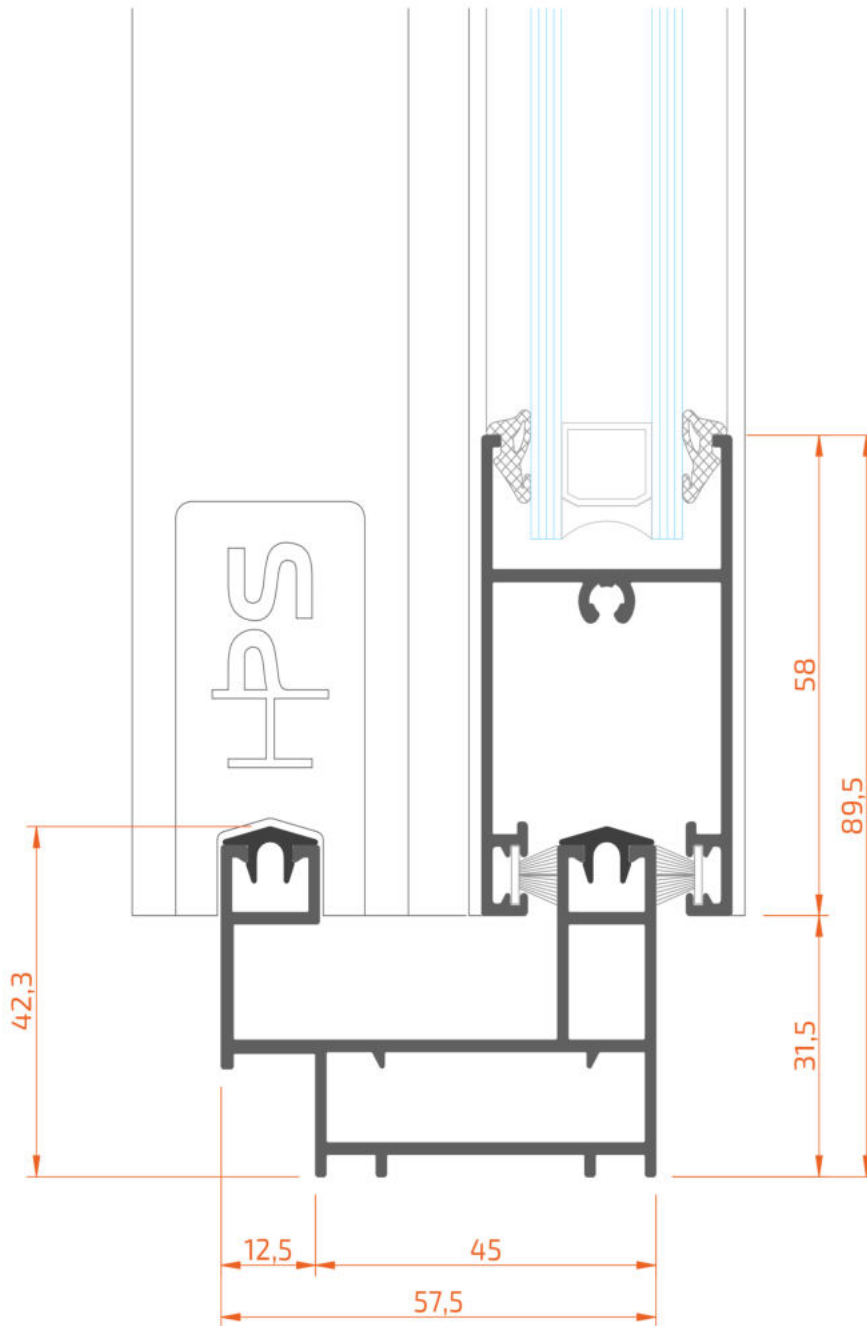
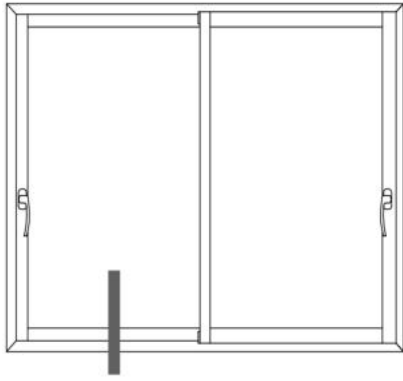
Sections echelle 1:1



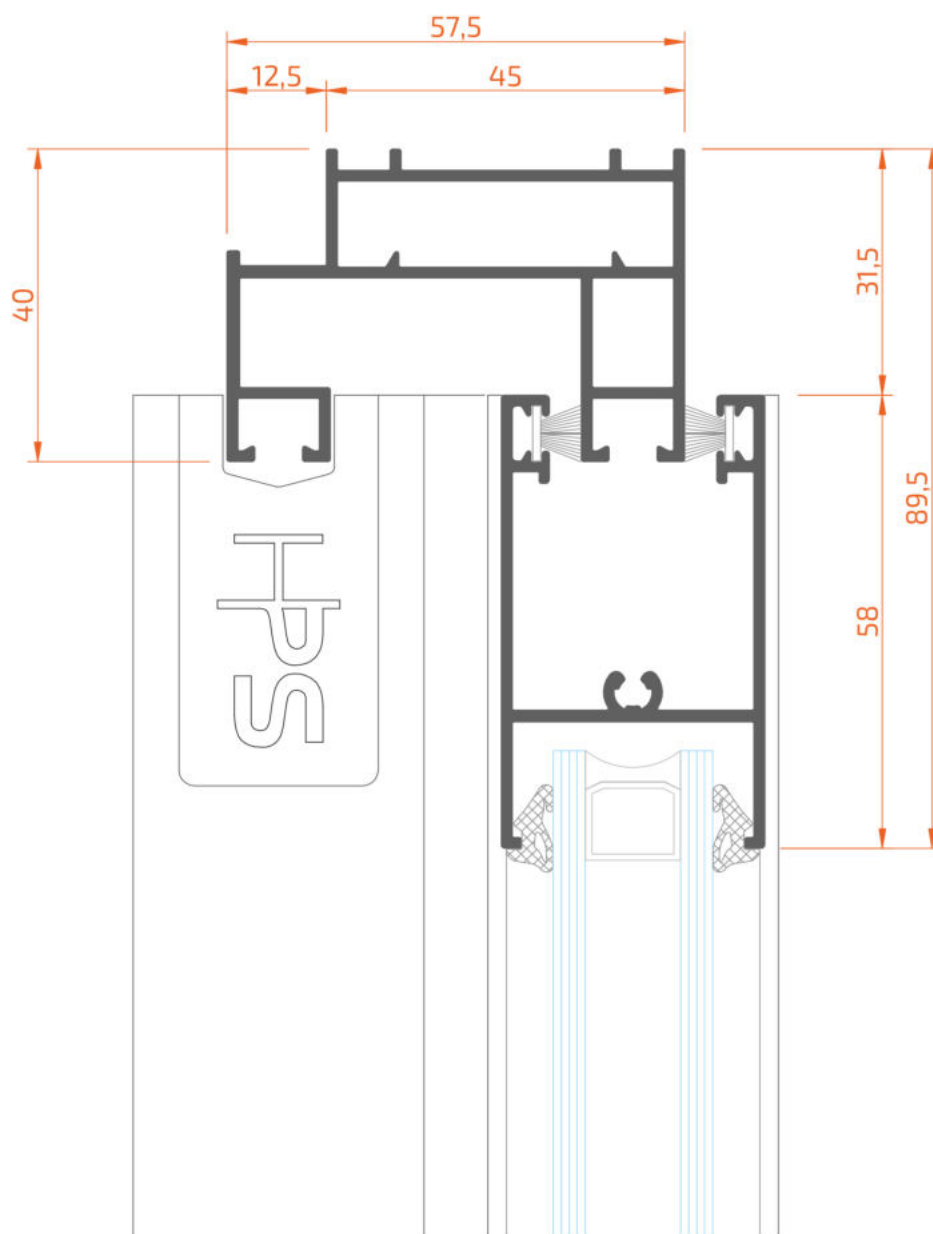
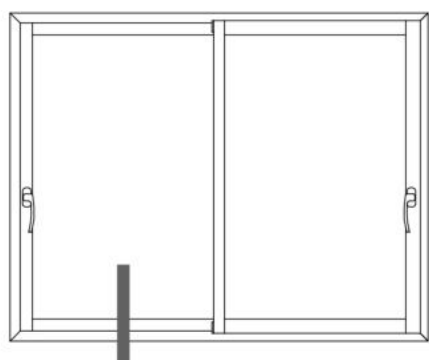


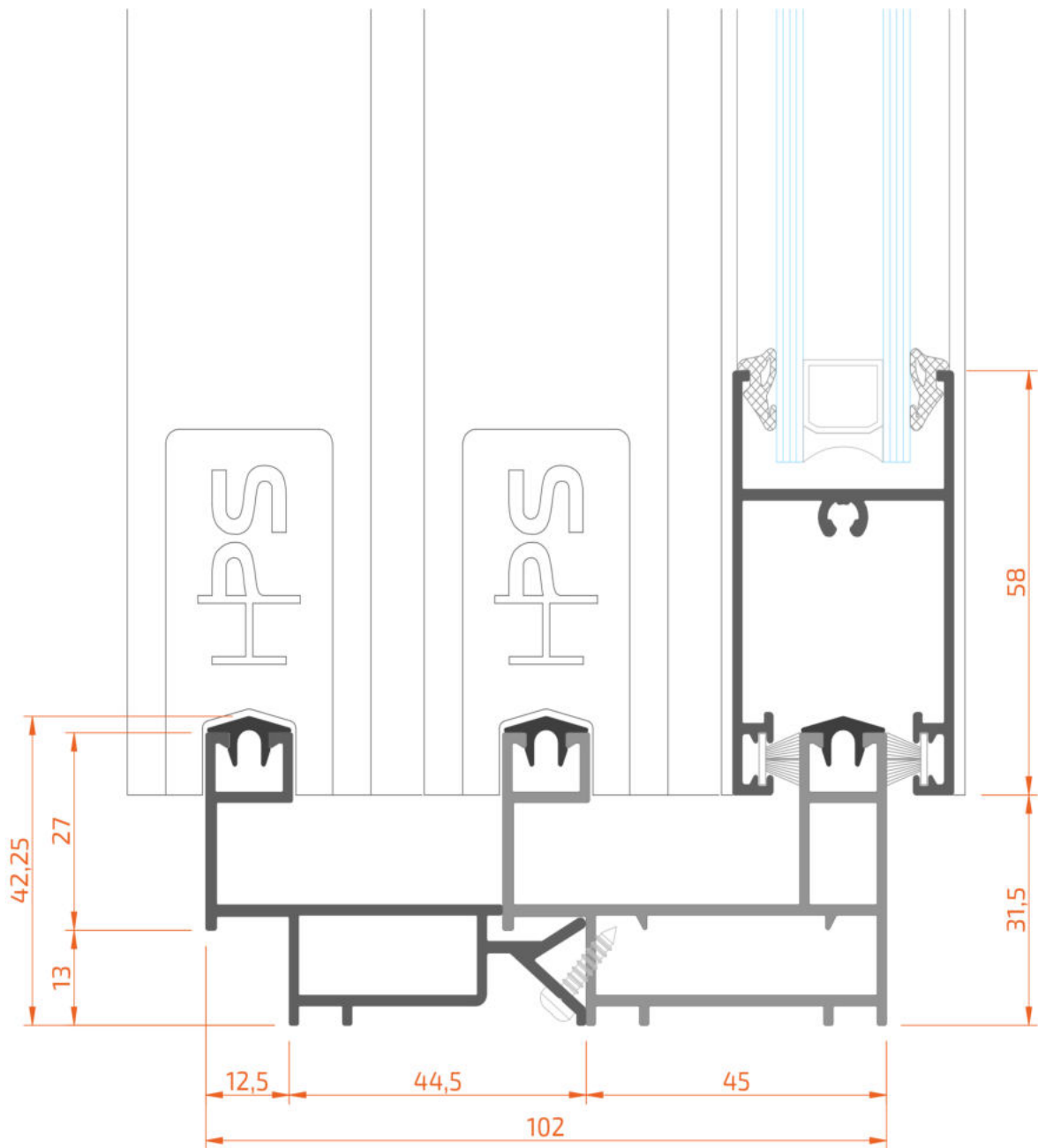
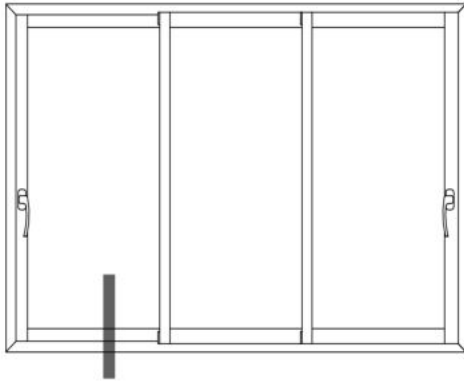
Sections echelle 1:1



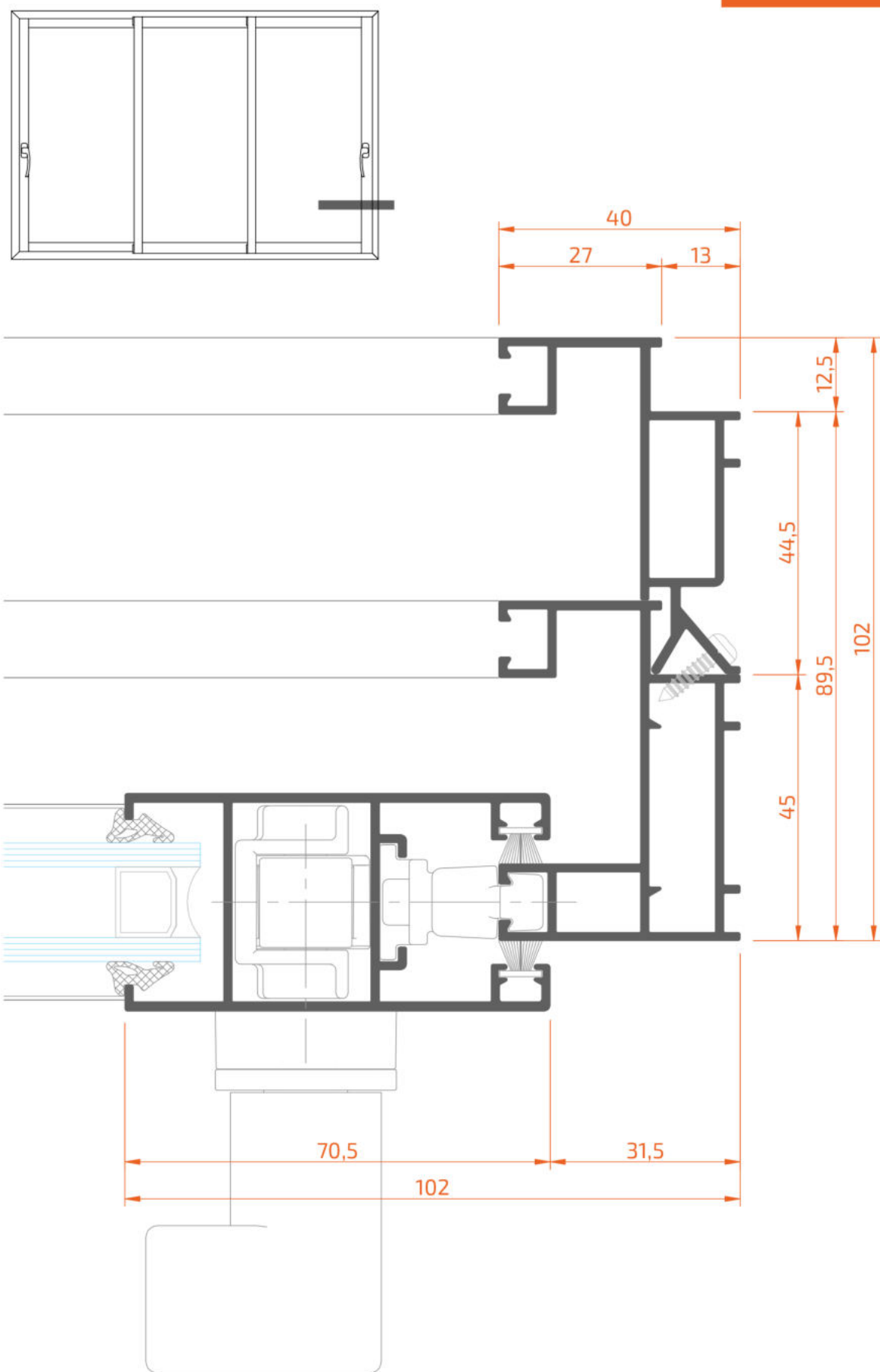


Sections echelle 1:1

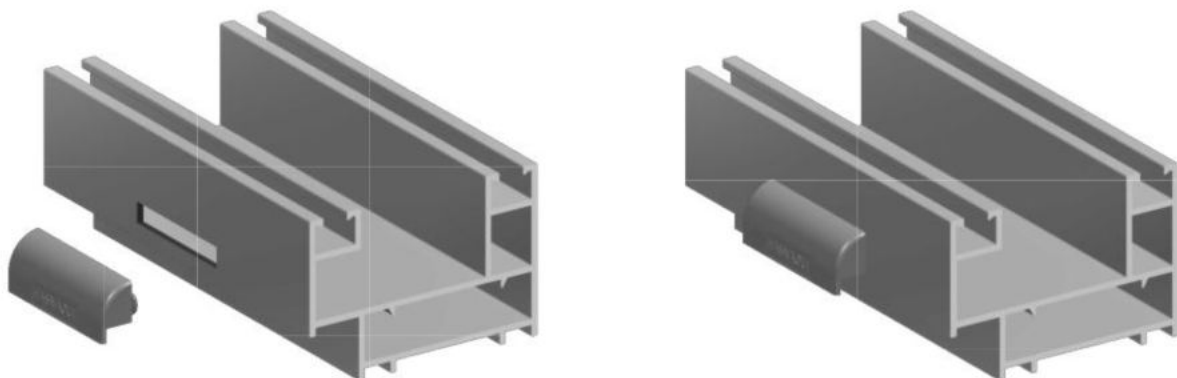




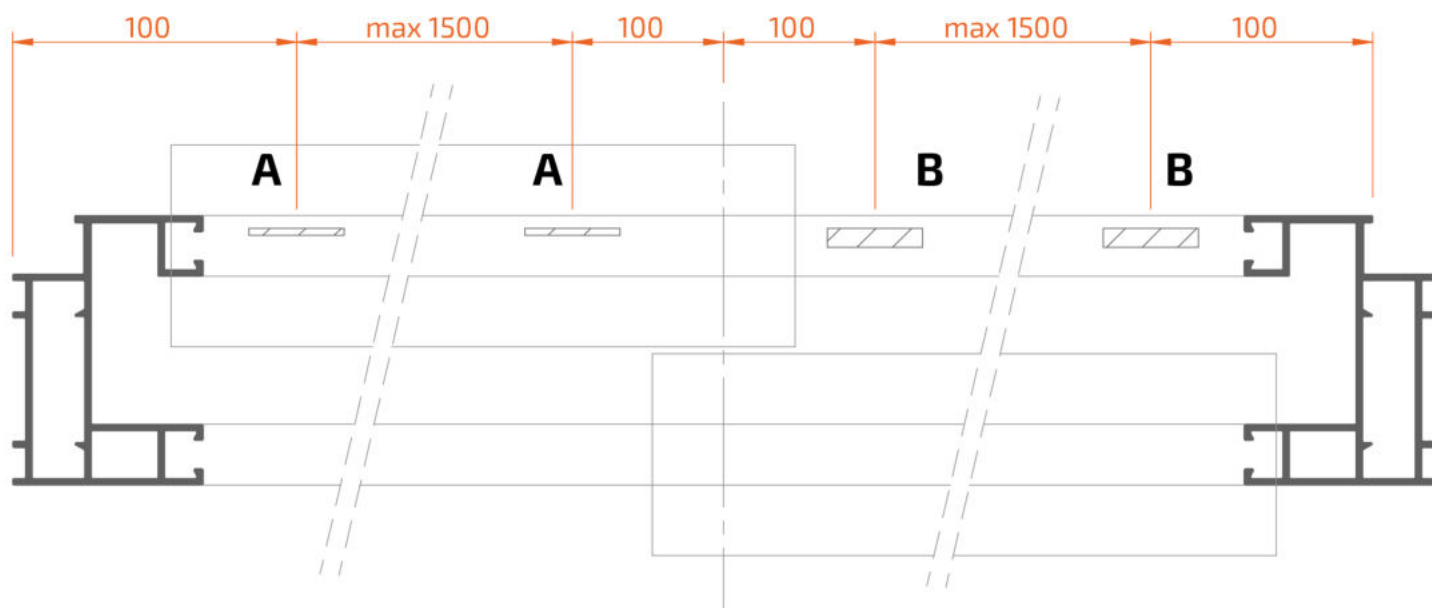
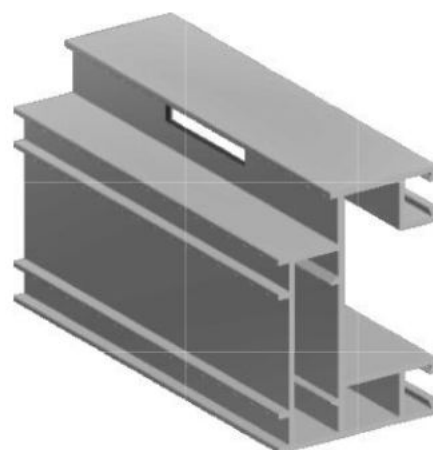
Sections echelle 1:1

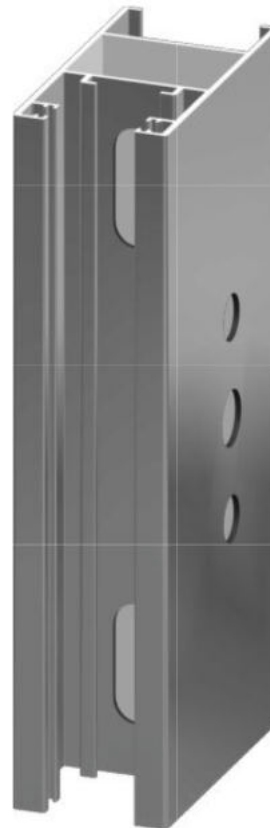
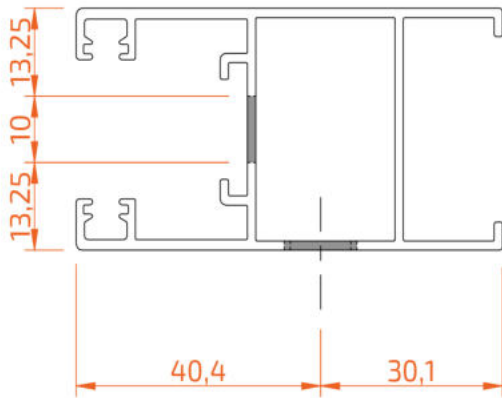
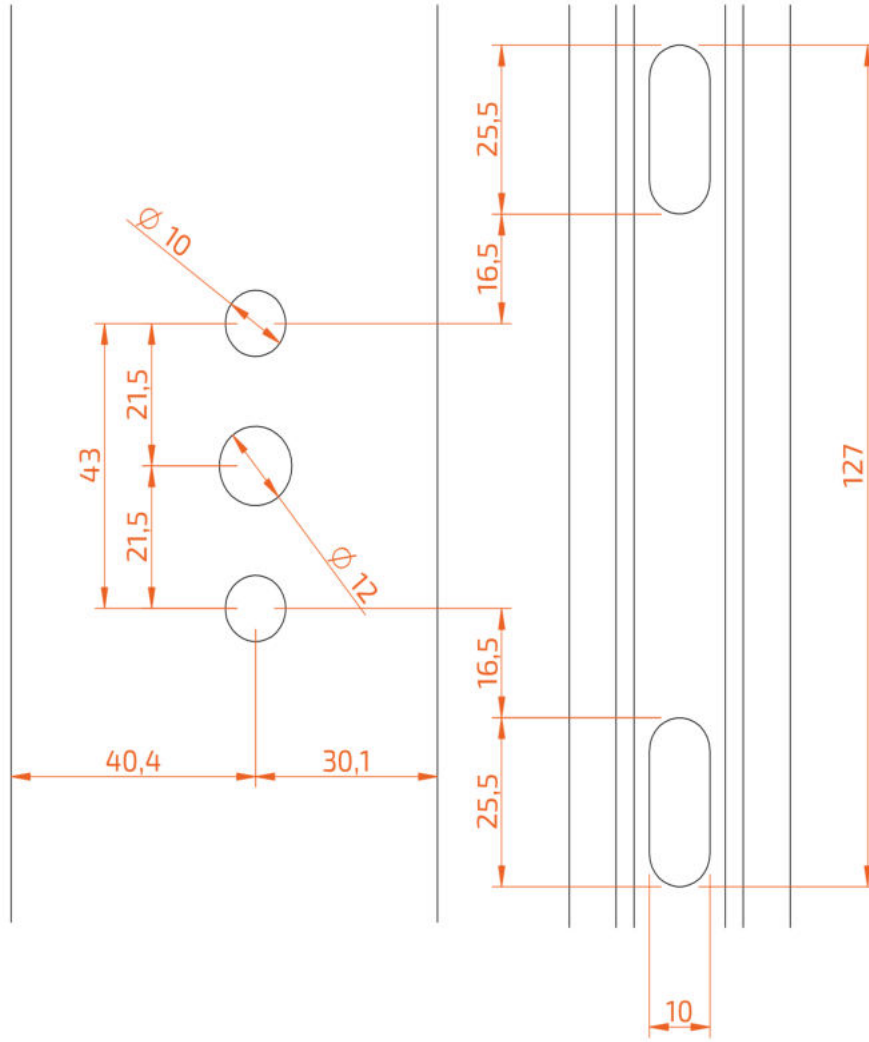


trou de sortie d'eau - type **A**
avec bouchon 6XXX 61010 (et deflecteur)



trou de sortie d'eau - type **B**





Autres détails





HASNAOUI PROFILE SYSTEMS

B. P. 245, Zone Industrielle Sidi Bel-Abbès 22000, Algérie
Tél : +213 (0) 48 70 66 19 / +213 (0) 48 70 66 20
Fax : +213 (0) 48 70 66 19
E-Mail : info@hps-dz.com

